

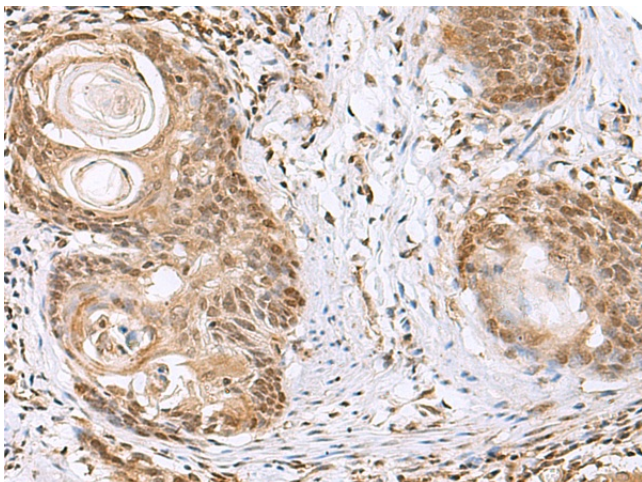
## Product datasheet for **TA370584**

### ELAC1 Rabbit Polyclonal Antibody

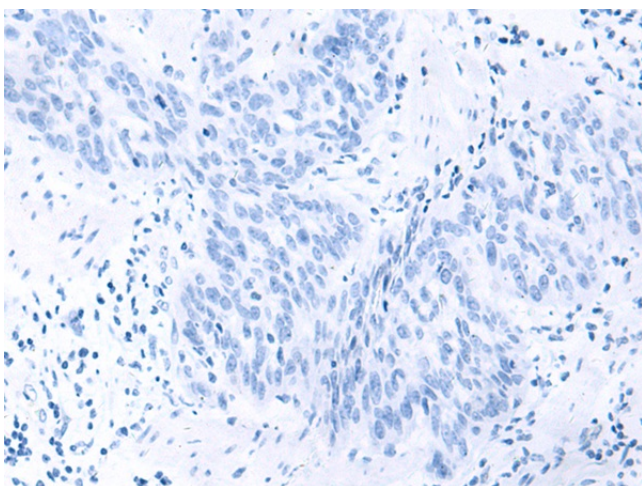
#### Product data:

Product Type:	Primary Antibodies
Applications:	IHC
Recommended Dilution:	IHC: 50–300 Positive control: Human esophagus cancer Predicted cell location: Nucleus
Reactivity:	Human, Mouse
Host:	Rabbit
Isotype:	IgG
Clonality:	Polyclonal
Immunogen:	Fusion protein of human ELAC1
Formulation:	pH7.4 PBS, 0.05% NaN <sub>3</sub> , 40% Glycerol
Concentration:	lot specific
Purification:	Antigen affinity purification
Conjugation:	Unconjugated
Storage:	Store at -20°C.
Stability:	1 year
Gene Name:	elaC ribonuclease Z 1
Database Link:	<a href="#">Entrez Gene 55520 Human Q9H777</a>
Background:	Zinc phosphodiesterase, which displays some tRNA 3'-processing endonuclease activity. Probably involved in tRNA maturation, by removing a 3'-trailer from precursor tRNA.
Synonyms:	D29

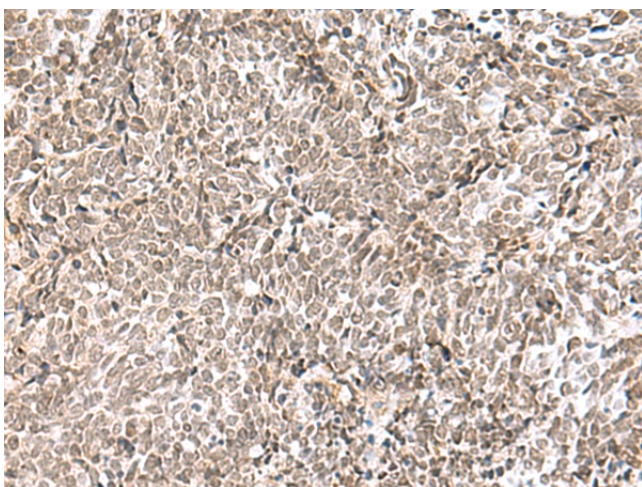


**Product images:**

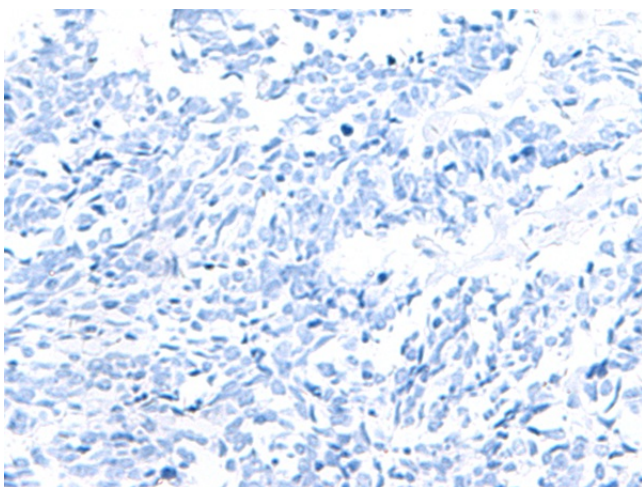
Immunohistochemistry of paraffin-embedded Human esophagus cancer tissue using TA370584 (ELAC1 Antibody) at dilution 1/65 (Original magnification:  $\times 200$ )



Immunohistochemistry of paraffin-embedded Human esophagus cancer tissue using TA370584 (ELAC1 Antibody) at dilution 1/65, treated with fusion protein. (Original magnification:  $\times 200$ )



Immunohistochemistry of paraffin-embedded Human lung cancer tissue using TA370584 (ELAC1 Antibody) at dilution 1/65 (Original magnification: ×200)



Immunohistochemistry of paraffin-embedded Human lung cancer tissue using TA370584 (ELAC1 Antibody) at dilution 1/65, treated with fusion protein. (Original magnification: ×200)