

Product datasheet for **TA370574**

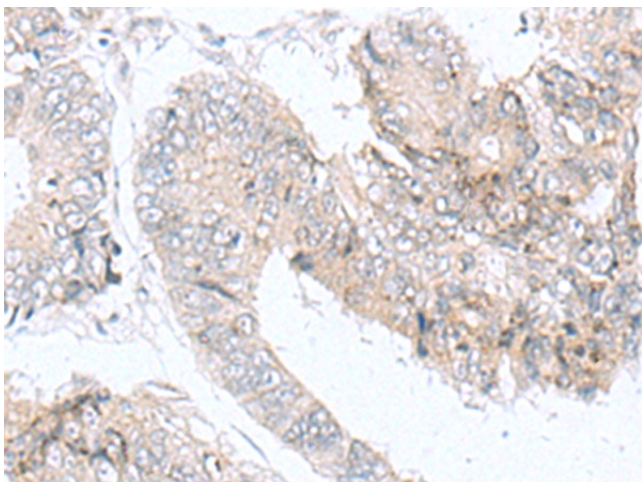
IQCD Rabbit Polyclonal Antibody

Product data:

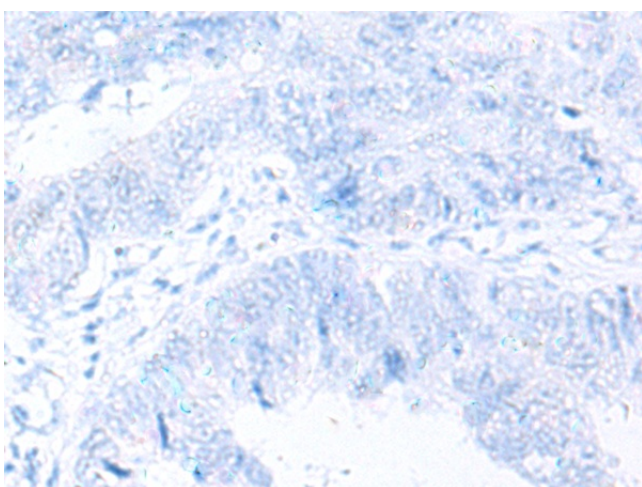
| | |
|-----------------------|------------------------------------------------------------------------------------------------|
| Product Type: | Primary Antibodies |
| Applications: | IHC |
| Recommended Dilution: | IHC: 50-300 Positive control: Human colorectal cancer Predicted cell location: Cytoplasm |
| Reactivity: | Human |
| Host: | Rabbit |
| Isotype: | IgG |
| Clonality: | Polyclonal |
| Immunogen: | Fusion protein of human IQCD |
| Formulation: | pH7.4 PBS, 0.05% NaN ₃ , 40% Glycerol |
| Concentration: | lot specific |
| Purification: | Antigen affinity purification |
| Conjugation: | Unconjugated |
| Storage: | Store at -20°C. |
| Stability: | 1 year |
| Gene Name: | IQ motif containing D |
| Database Link: | Entrez Gene 115811 Human Q96DY2 |
| Background: | IQCD contains 1 IQ domain. The function of the IQCD protein is not known. |
| Synonyms: | 4933433C09Rik |



[View online »](#)

Product images:

Immunohistochemistry of paraffin-embedded Human colorectal cancer tissue using TA370574 (IQCD Antibody) at dilution 1/90 (Original magnification: ×200)



Immunohistochemistry of paraffin-embedded Human colorectal cancer tissue using TA370574 (IQCD Antibody) at dilution 1/90, treated with fusion protein. (Original magnification: ×200)