

## Product datasheet for **TA370569**

### **REG1 beta (REG1B) Rabbit Polyclonal Antibody**

#### **Product data:**

Product Type:	Primary Antibodies
Applications:	IHC, WB
Recommended Dilution:	WB: 1000-5000 WB positive control: Human pancreas tissues lysates IHC: 50-300 Positive control: Human tonsil Predicted cell location: Cytoplasm
Reactivity:	Human
Host:	Rabbit
Isotype:	IgG
Clonality:	Polyclonal
Immunogen:	Fusion protein of human REG1B
Formulation:	pH7.4 PBS, 0.05% NaN <sub>3</sub> , 40% Glycerol
Concentration:	lot specific
Purification:	Antigen affinity purification
Conjugation:	Unconjugated
Storage:	Store at -20°C.
Stability:	1 year
Predicted Protein Size:	19 kDa
Gene Name:	regenerating family member 1 beta
Database Link:	<a href="#">Entrez Gene 5968 Human P48304</a>



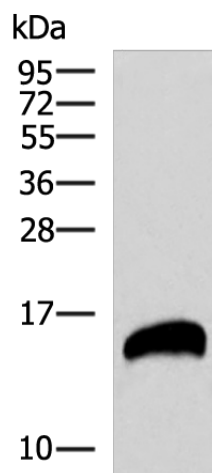
[View online »](#)

**Background:**

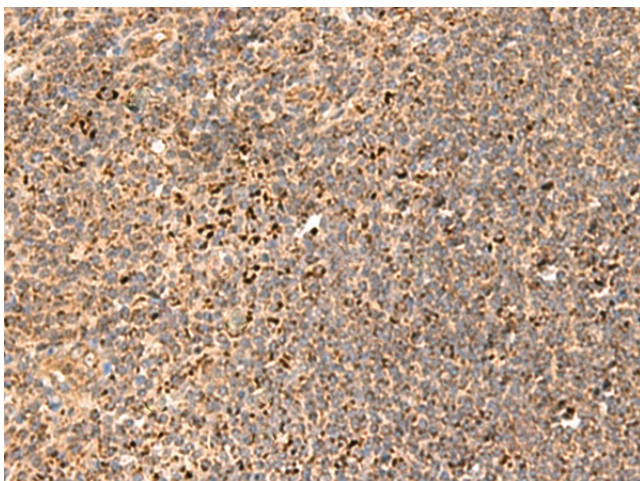
This gene is a type I subclass member of the Reg gene family. The Reg gene family is a multigene family grouped into four subclasses, types I, II, III and IV based on the primary structures of the encoded proteins. This gene encodes a protein secreted by the exocrine pancreas that is highly similar to the REG1A protein. The related REG1A protein is associated with islet cell regeneration and diabetogenesis, and may be involved in pancreatic lithogenesis. Reg family members REG1A, REGL, PAP and this gene are tandemly clustered on chromosome 2p12 and may have arisen from the same ancestral gene by gene duplication.

**Synonyms:**

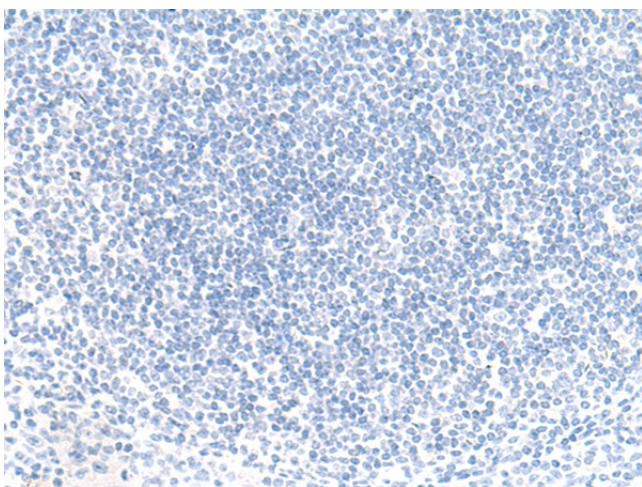
PSPS2; REGH; REGI-BETA; REGL

**Product images:**


Gel: 12%SDS-PAGE  
Lysate: 40 µg  
Lane: Human pancreas tissues lysate  
Primary antibody: TA370569 (REG1B Antibody) at dilution 1/800  
Secondary antibody: Goat anti rabbit IgG at 1/5000 dilution  
Exposure time: 20 seconds



Immunohistochemistry of paraffin-embedded Human tonsil tissue using TA370569 (REG1B Antibody) at dilution 1/55 (Original magnification: ×200)



Immunohistochemistry of paraffin-embedded Human tonsil tissue using TA370569 (REG1B Antibody) at dilution 1/55, treated with fusion protein. (Original magnification: ×200)