

Product datasheet for **TA370563**

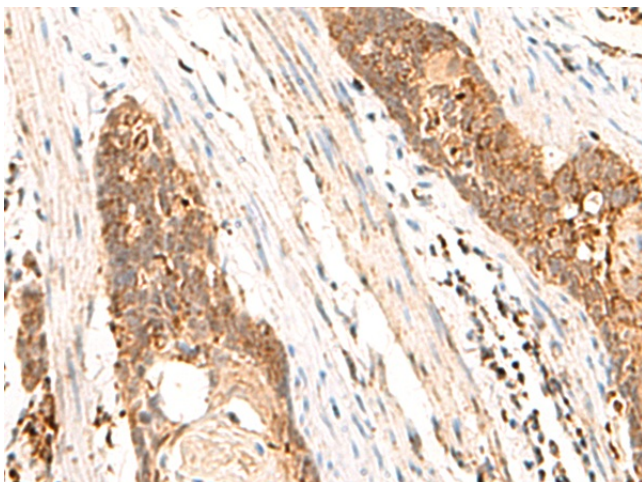
CYYR1 Rabbit Polyclonal Antibody

Product data:

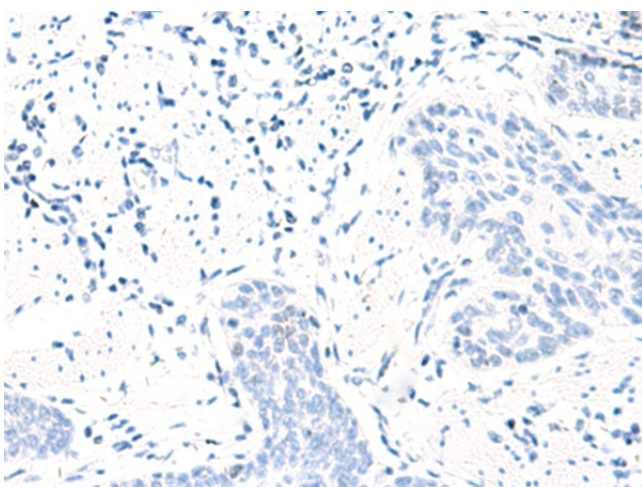
Product Type:	Primary Antibodies
Applications:	IHC
Recommended Dilution:	IHC: 50-300 Positive control: Human esophagus cancer Predicted cell location: Cytoplasm
Reactivity:	Human, Mouse
Host:	Rabbit
Isotype:	IgG
Clonality:	Polyclonal
Immunogen:	Fusion protein of human CYYR1
Formulation:	pH7.4 PBS, 0.05% NaN ₃ , 40% Glycerol
Concentration:	lot specific
Purification:	Antigen affinity purification
Conjugation:	Unconjugated
Storage:	Store at -20°C.
Stability:	1 year
Gene Name:	cysteine and tyrosine rich 1
Database Link:	Entrez Gene 116159 Human Q96J86
Background:	The function of this protein is unknown.
Synonyms:	C21orf95



[View online »](#)

Product images:

Immunohistochemistry of paraffin-embedded Human esophagus cancer tissue using TA370563 (CYYR1 Antibody) at dilution 1/85 (Original magnification: $\times 200$)



Immunohistochemistry of paraffin-embedded Human esophagus cancer tissue using TA370563 (CYYR1 Antibody) at dilution 1/85, treated with fusion protein. (Original magnification: $\times 200$)