

Product datasheet for **TA370557**

ASTE1 Rabbit Polyclonal Antibody

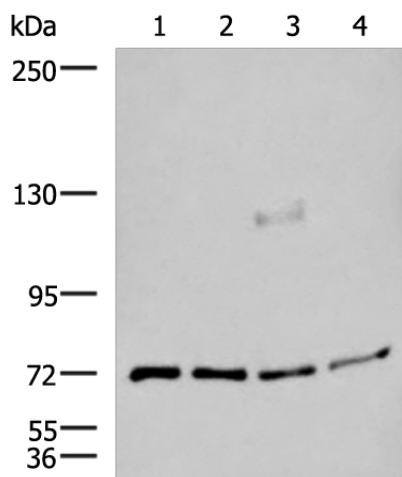
Product data:

Product Type:	Primary Antibodies
Applications:	IHC, WB
Recommended Dilution:	WB: 500-2000 WB positive control: A549, A172, TM4 and PC3 cell lysates IHC: 50-300 Positive control: Human thyroid cancer Predicted cell location: Cytoplasm
Reactivity:	Human, Mouse
Host:	Rabbit
Isotype:	IgG
Clonality:	Polyclonal
Immunogen:	Fusion protein of human ASTE1
Formulation:	pH7.4 PBS, 0.05% NaN ₃ , 40% Glycerol
Concentration:	lot specific
Purification:	Antigen affinity purification
Conjugation:	Unconjugated
Storage:	Store at -20°C.
Stability:	1 year
Predicted Protein Size:	77 kDa
Gene Name:	asteroid homolog 1 (Drosophila)
Database Link:	Entrez Gene 28990 Human Q2TB18
Background:	Possible role in EGF receptor signaling.
Synonyms:	HT001; MGC129980



[View online »](#)

Product images:



Gel: 6%SDS-PAGE

Lysate: 40 μ g

Lane 1-4: A549

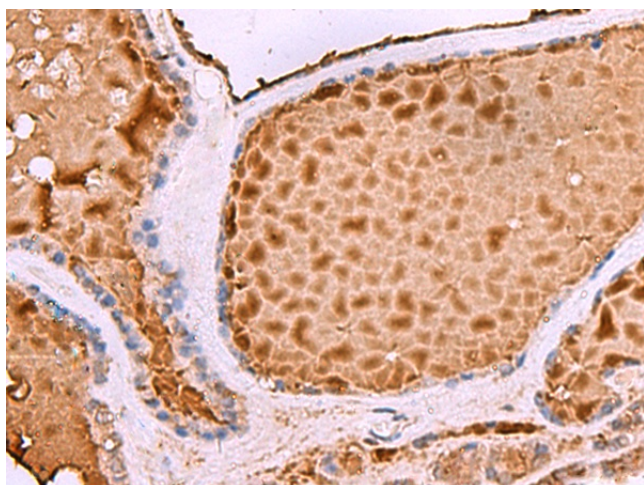
A172

TM4 and PC3 cell lysates

Primary antibody: TA370557 (ASTE1 Antibody) at dilution 1/600

Secondary antibody: Goat anti rabbit IgG at 1/5000 dilution

Exposure time: 2 minutes



Immunohistochemistry of paraffin-embedded Human thyroid cancer tissue using TA370557 (ASTE1 Antibody) at dilution 1/50. (Original magnification: \times 200)