

Product datasheet for **TA370552**

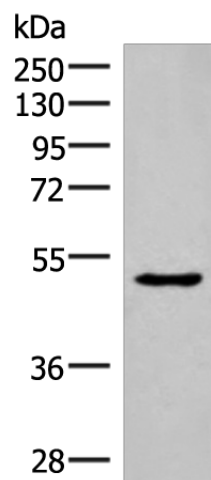
NKD2 Rabbit Polyclonal Antibody

Product data:

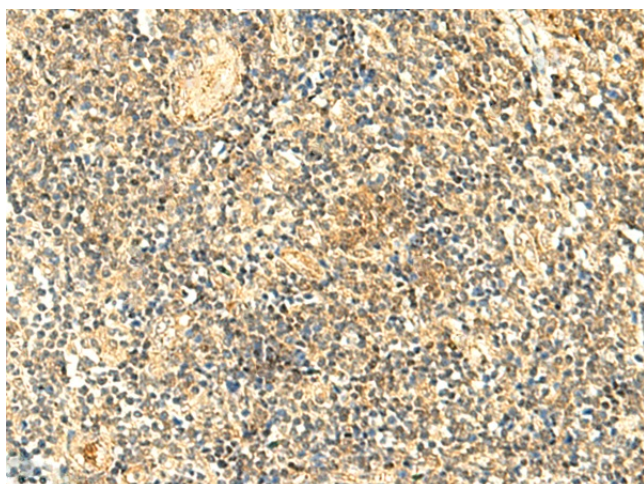
| | |
|-------------------------|--|
| Product Type: | Primary Antibodies |
| Applications: | IHC, WB |
| Recommended Dilution: | WB: 500-2000 WB positive control: Mouse Pancreas tissue lysate IHC: 40-200 Positive control: Human tonsil Predicted cell location: Cytoplasm |
| Reactivity: | Human, Mouse |
| Host: | Rabbit |
| Isotype: | IgG |
| Clonality: | Polyclonal |
| Immunogen: | Fusion protein of human NKD2 |
| Formulation: | pH7.4 PBS, 0.05% NaN ₃ , 40% Glycerol |
| Concentration: | lot specific |
| Purification: | Antigen affinity purification |
| Conjugation: | Unconjugated |
| Storage: | Store at -20°C. |
| Stability: | 1 year |
| Predicted Protein Size: | 50 kDa |
| Gene Name: | naked cuticle homolog 2 |
| Database Link: | Entrez Gene 85409 Human Q969F2 |
| Background: | This gene encodes a member of a family of proteins that function as negative regulators of Wnt receptor signaling through interaction with Dishevelled family members. The encoded protein participates in the delivery of transforming growth factor alpha-containing vesicles to the cell membrane. Alternatively spliced transcript variants encoding multiple isoforms have been observed for this gene. |
| Synonyms: | hNkd2; Naked-2; Naked2 |



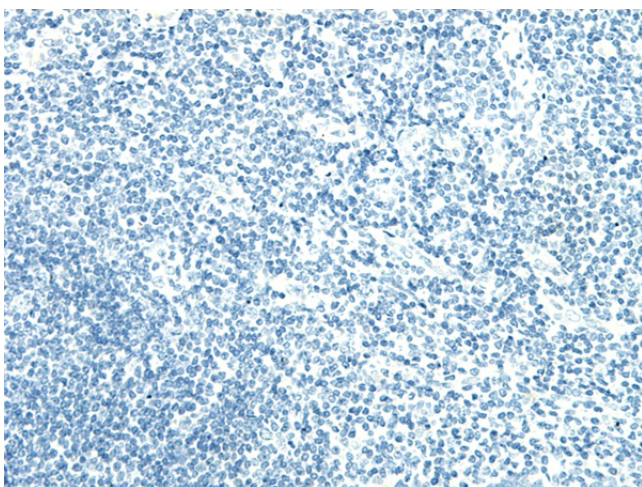
[View online »](#)

Product images:

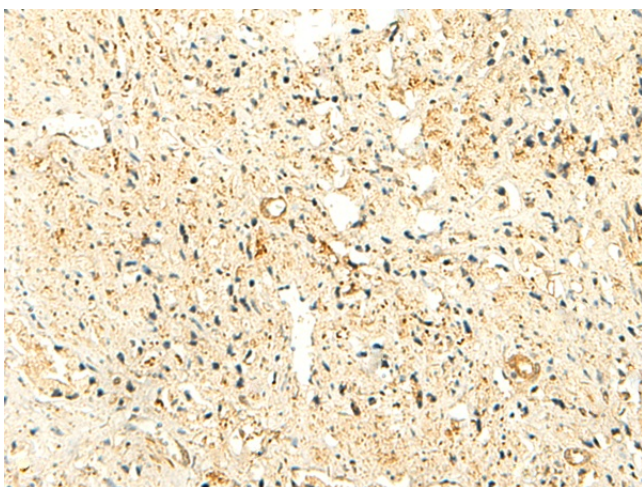
Gel: 8%SDS-PAGE
Lysate: 40 µg
Lane: Mouse Pancreas tissue lysate
Primary antibody: TA370552 (NKD2 Antibody) at dilution 1/350
Secondary antibody: Goat anti rabbit IgG at 1/8000 dilution
Exposure time: 1 minute



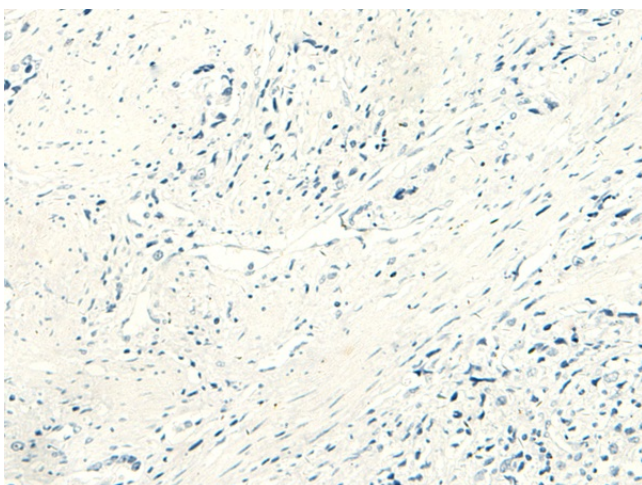
Immunohistochemistry of paraffin-embedded Human tonsil tissue using TA370552 (NKD2 Antibody) at dilution 1/50 (Original magnification: ×200)



Immunohistochemistry of paraffin-embedded Human tonsil tissue using TA370552 (NKD2 Antibody) at dilution 1/50, treated with fusion protein. (Original magnification: x200)



Immunohistochemistry of paraffin-embedded Human prostate cancer tissue using TA370552 (NKD2 Antibody) at dilution 1/50 (Original magnification: x200)



Immunohistochemistry of paraffin-embedded Human prostate cancer tissue using TA370552 (NKD2 Antibody) at dilution 1/50, treated with fusion protein. (Original magnification: x200)