

Product datasheet for **TA370542S**

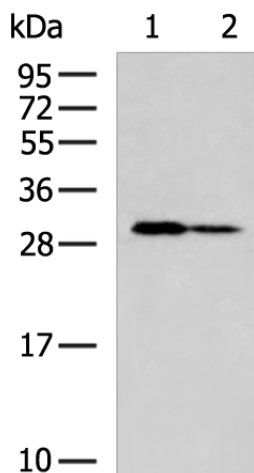
ZNF688 Rabbit Polyclonal Antibody

Product data:

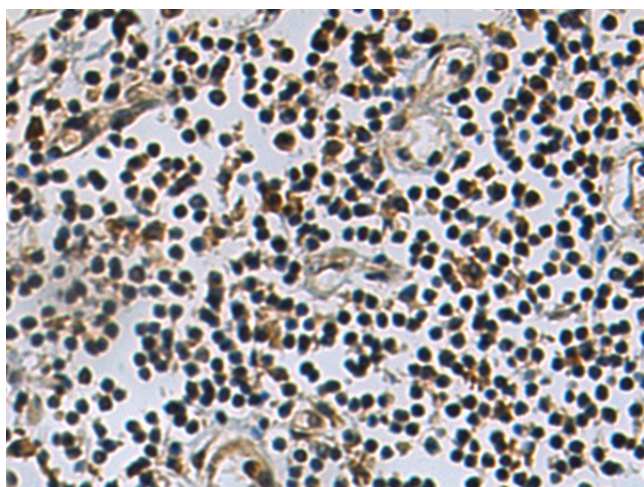
Product Type:	Primary Antibodies
Applications:	IHC, WB
Recommended Dilution:	WB: 500-2000 WB positive control: A172 and 231 cell lysates IHC: 50-200 Positive control: Human breast cancer Predicted cell location: Nucleus
Reactivity:	Human
Host:	Rabbit
Isotype:	IgG
Clonality:	Polyclonal
Immunogen:	Fusion protein of human ZNF688
Formulation:	pH7.4 PBS, 0.05% NaN ₃ , 40% Glycerol
Purification:	Antigen affinity purification
Conjugation:	Unconjugated
Storage:	Store at -20°C.
Stability:	1 year
Predicted Protein Size:	31 kDa
Gene Name:	zinc finger protein 688
Database Link:	Entrez Gene 146542 Human P0C7X2
Background:	May be involved in transcriptional regulation.
Synonyms:	ZNF688



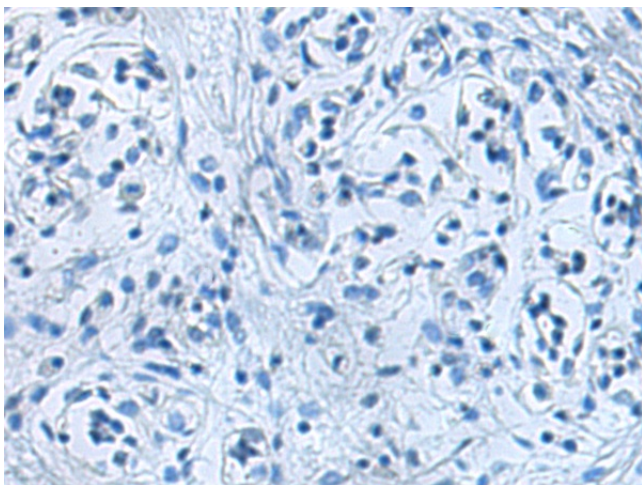
[View online »](#)

Product images:

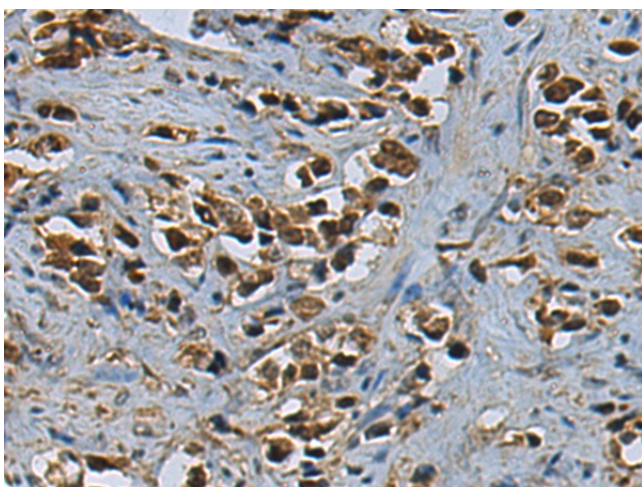
Gel: 12%SDS-PAGE
Lysate: 40 μ g
Lane 1-2: A172 and 231 cell lysates
Primary antibody: [TA370542] (ZNF688 Antibody) at dilution 1/700
Secondary antibody: Goat anti rabbit IgG at 1/5000 dilution
Exposure time: 10 seconds



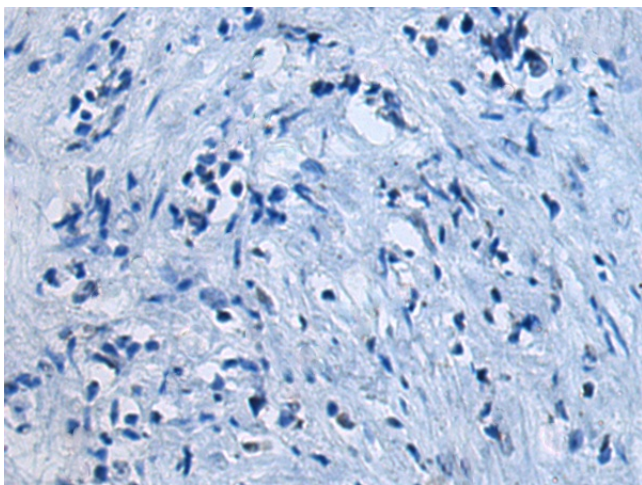
Immunohistochemistry of paraffin-embedded Human breast cancer tissue using [TA370542] (ZNF688 Antibody) at dilution 1/90 (Original magnification: \times 200)



Immunohistochemistry of paraffin-embedded Human breast cancer tissue using [TA370542] (ZNF688 Antibody) at dilution 1/90, treated with fusion protein. (Original magnification: ×200)



Immunohistochemistry of paraffin-embedded Human prostate cancer tissue using [TA370542] (ZNF688 Antibody) at dilution 1/90 (Original magnification: ×200)



Immunohistochemistry of paraffin-embedded Human prostate cancer tissue using [TA370542] (ZNF688 Antibody) at dilution 1/90, treated with fusion protein. (Original magnification: ×200)