

## Product datasheet for **TA370534S**

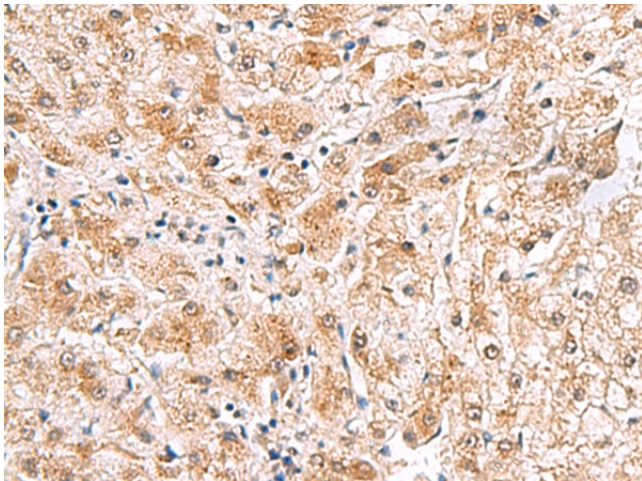
### PDCL2 Rabbit Polyclonal Antibody

#### Product data:

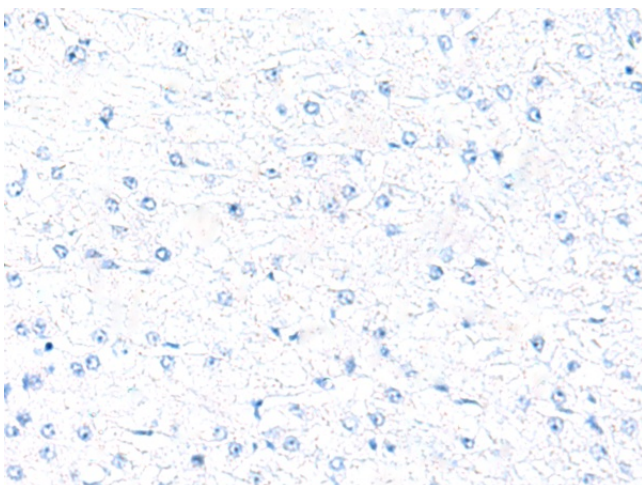
Product Type:	Primary Antibodies
Applications:	IHC
Recommended Dilution:	IHC: 50-300 Positive control: Human liver cancer Predicted cell location: Cytoplasm
Reactivity:	Human, Mouse
Host:	Rabbit
Isotype:	IgG
Clonality:	Polyclonal
Immunogen:	Fusion protein of human PDCL2
Formulation:	pH7.4 PBS, 0.05% NaN <sub>3</sub> , 40% Glycerol
Purification:	Antigen affinity purification
Conjugation:	Unconjugated
Storage:	Store at -20°C.
Stability:	1 year
Gene Name:	phosducin like 2
Database Link:	<a href="#">Entrez Gene 132954 Human Q8N4E4</a>
Background:	This gene encodes a member of the phosducin-like protein family and is a putative modulator of heterotrimeric G proteins. The protein shares extensive amino acid sequence homology with phosducin. Members of the phosducin-like protein family have been shown to bind to the beta-gamma subunits of G proteins.
Synonyms:	GCPHLP



[View online »](#)

**Product images:**

Immunohistochemistry of paraffin-embedded Human liver cancer tissue using [TA370534] (PDCL2 Antibody) at dilution 1/65 (Original magnification:  $\times 200$ )



Immunohistochemistry of paraffin-embedded Human liver cancer tissue using [TA370534] (PDCL2 Antibody) at dilution 1/65, treated with fusion protein. (Original magnification:  $\times 200$ )