

## Product datasheet for **TA370532S**

### **MACROD1 Rabbit Polyclonal Antibody**

#### **Product data:**

Product Type:	Primary Antibodies
Applications:	IHC
Recommended Dilution:	IHC: 100-300 Positive control: Human breast cancer Predicted cell location: Nucleus or Cytoplasm
Reactivity:	Human, Mouse, Rat
Host:	Rabbit
Isotype:	IgG
Clonality:	Polyclonal
Immunogen:	Fusion protein of human MACROD1
Formulation:	pH7.4 PBS, 0.05% NaN <sub>3</sub> , 40% Glycerol
Purification:	Antigen affinity purification
Conjugation:	Unconjugated
Storage:	Store at -20°C.
Stability:	1 year
Gene Name:	MACRO domain containing 1
Database Link:	<a href="#">Entrez Gene 28992 Human Q9BQ69</a>



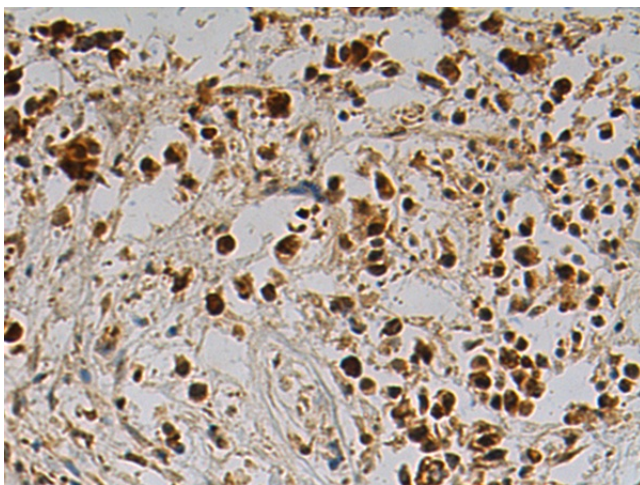
[View online »](#)

**Background:**

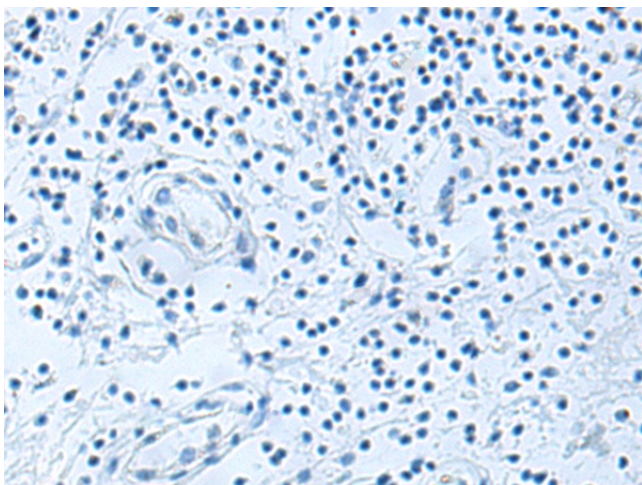
Removes ADP-ribose from asparatate and glutamate residues in proteins bearing a single ADP-ribose moiety (PubMed:23474714, PubMed:23474712). Inactive towards proteins bearing poly-ADP-ribose (PubMed:23474714, PubMed:23474712). Deacetylates O-acetyl-ADP ribose, a signaling molecule generated by the deacetylation of acetylated lysine residues in histones and other proteins (PubMed:21257746). Plays a role in estrogen signaling (PubMed:17893710, PubMed:17914104, PubMed:19403568). Binds to androgen receptor (AR) and amplifies the transactivation function of AR in response to androgen (PubMed:19022849). May play an important role in carcinogenesis and/or progression of hormone-dependent cancers by feed-forward mechanism that activates ESR1 transactivation (PubMed:17893710, PubMed:17914104). Could be an ESR1 coactivator, providing a positive feedback regulatory loop for ESR1 signal transduction (PubMed:17914104). Could be involved in invasive growth by down-regulating CDH1 in endometrial cancer cells (PubMed:17893710). Enhances ESR1-mediated transcription activity (PubMed:17914104).

**Synonyms:**

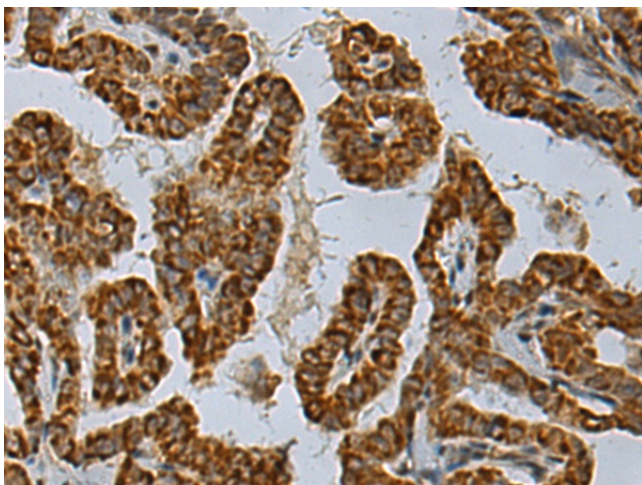
LRP16

**Product images:**


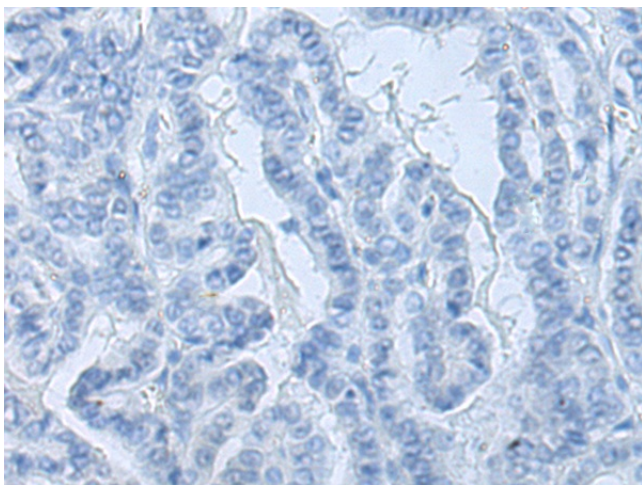
Immunohistochemistry of paraffin-embedded Human breast cancer tissue using [TA370532] (MACROD1 Antibody) at dilution 1/110 (Original magnification: ×200)



Immunohistochemistry of paraffin-embedded Human breast cancer tissue using [TA370532] (MACROD1 Antibody) at dilution 1/110, treated with fusion protein. (Original magnification: ×200)



Immunohistochemistry of paraffin-embedded Human thyroid cancer tissue using [TA370532] (MACROD1 Antibody) at dilution 1/110 (Original magnification: ×200)



Immunohistochemistry of paraffin-embedded Human thyroid cancer tissue using [TA370532] (MACROD1 Antibody) at dilution 1/110, treated with fusion protein. (Original magnification: ×200)