

## Product datasheet for **TA370521S**

### DCAF10 Rabbit Polyclonal Antibody

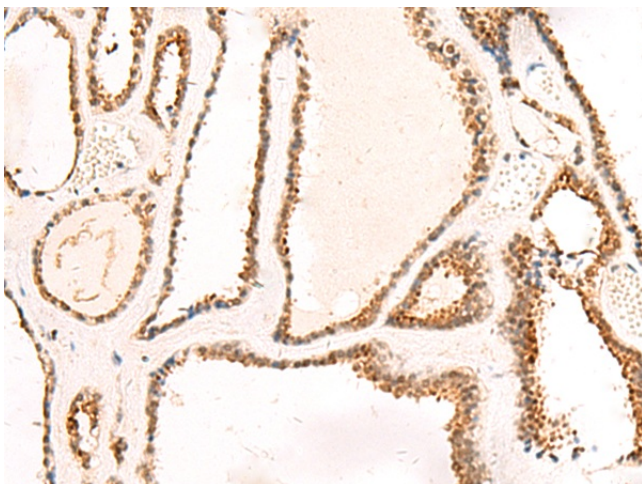
#### Product data:

Product Type:	Primary Antibodies
Applications:	IHC
Recommended Dilution:	IHC: 50-300 Positive control: Human thyroid cancer Predicted cell location: Nucleus
Reactivity:	Human, Mouse
Host:	Rabbit
Isotype:	IgG
Clonality:	Polyclonal
Immunogen:	Fusion protein of human DCAF10
Formulation:	pH7.4 PBS, 0.05% NaN <sub>3</sub> , 40% Glycerol
Purification:	Antigen affinity purification
Conjugation:	Unconjugated
Storage:	Store at -20°C.
Stability:	1 year
Gene Name:	DDB1 and CUL4 associated factor 10
Database Link:	<a href="#">Entrez Gene 79269 Human Q5QP82</a>
Background:	May function as a substrate receptor for CUL4-DDB1 E3 ubiquitin-protein ligase complex.
Synonyms:	WDR32

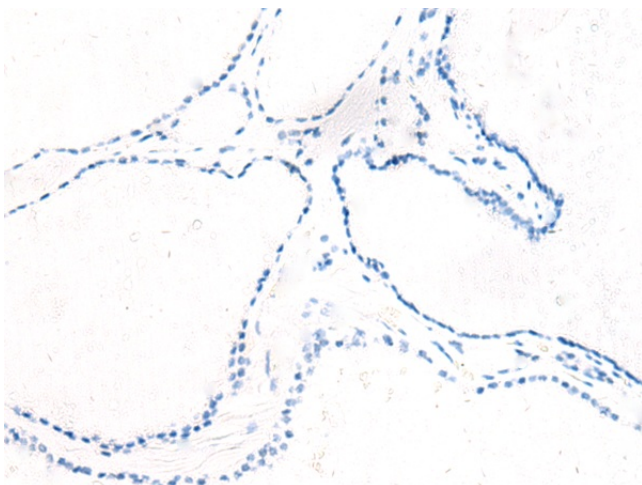


[View online »](#)

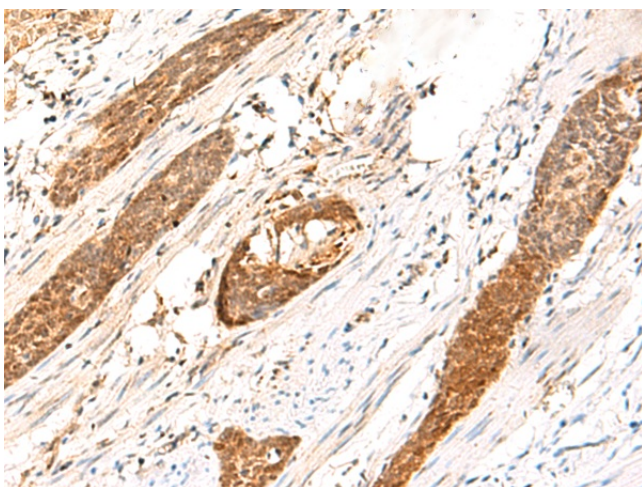
## Product images:



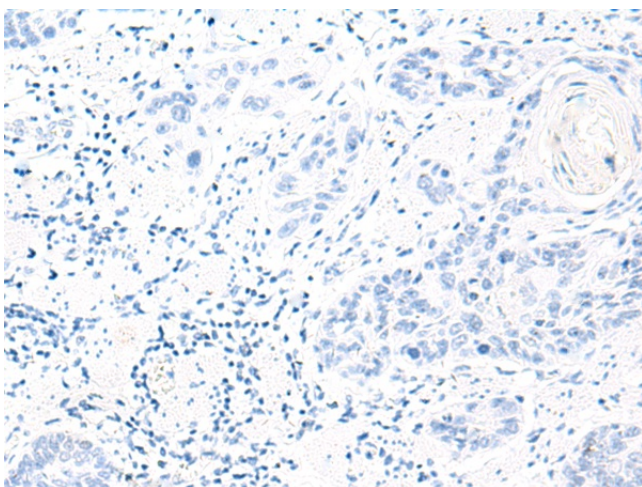
Immunohistochemistry of paraffin-embedded Human thyroid cancer tissue using [TA370521] (DCAF10 Antibody) at dilution 1/130 (Original magnification: ×200)



Immunohistochemistry of paraffin-embedded Human thyroid cancer tissue using [TA370521] (DCAF10 Antibody) at dilution 1/130, treated with fusion protein. (Original magnification: ×200)



Immunohistochemistry of paraffin-embedded Human esophagus cancer tissue using [TA370521] (DCAF10 Antibody) at dilution 1/130 (Original magnification: ×200)



Immunohistochemistry of paraffin-embedded Human esophagus cancer tissue using [TA370521] (DCAF10 Antibody) at dilution 1/130, treated with fusion protein. (Original magnification: ×200)