

Product datasheet for **TA370520**

DGCR6L Rabbit Polyclonal Antibody

Product data:

| | |
|-------------------------|---|
| Product Type: | Primary Antibodies |
| Applications: | IHC, WB |
| Recommended Dilution: | WB: 1000-5000 WB positive control: Human fetal liver tissue and 293T cell lysates IHC: 50-300 Positive control: Human thyroid cancer Predicted cell location: Nucleus |
| Reactivity: | Human |
| Host: | Rabbit |
| Isotype: | IgG |
| Clonality: | Polyclonal |
| Immunogen: | Fusion protein of human DGCR6L |
| Formulation: | pH7.4 PBS, 0.05% NaN ₃ , 40% Glycerol |
| Concentration: | lot specific |
| Purification: | Antigen affinity purification |
| Conjugation: | Unconjugated |
| Storage: | Store at -20°C. |
| Stability: | 1 year |
| Predicted Protein Size: | 25 kDa |
| Gene Name: | DiGeorge syndrome critical region gene 6-like |
| Database Link: | Entrez Gene 85359 Human Q9BY27 |



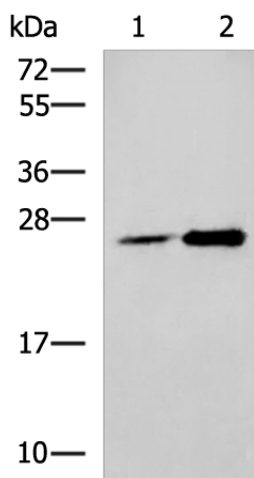
[View online »](#)

Background:

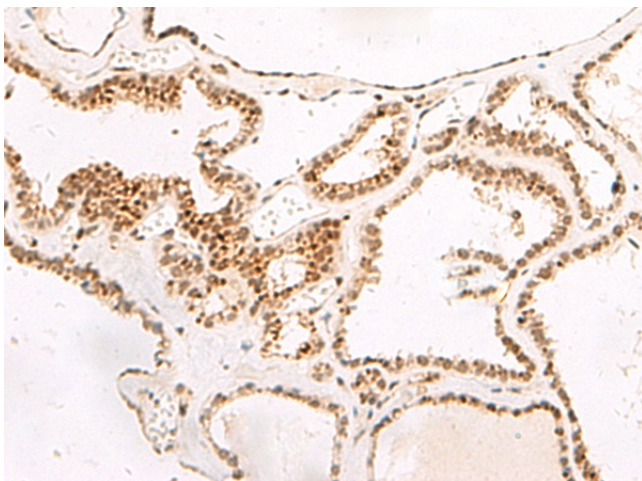
This gene, the result of a duplication at this locus, is one of two functional genes encoding nearly identical proteins that have similar expression patterns. The product of this gene is a protein that shares homology with the Drosophila gonadal protein, expressed in gonadal tissues and germ cells, and with the human laminin gamma-1 chain that functions in cell attachment and migration. This gene is located in a region of chromosome 22 implicated in the DiGeorge syndrome, one facet of a broader collection of anomalies referred to as the CATCH 22 syndrome.

Synonyms:

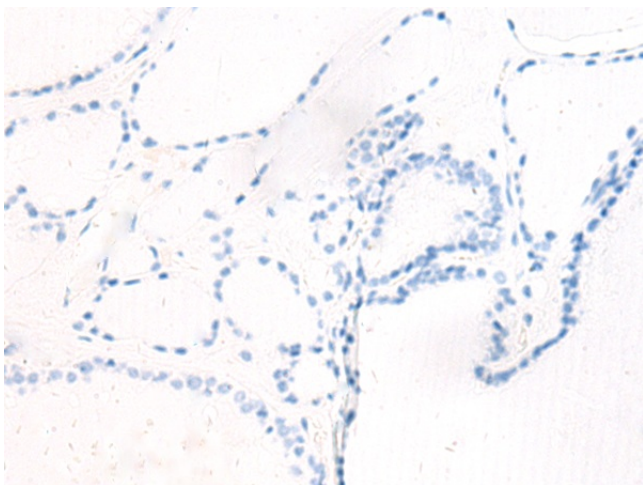
FLJ10666

Product images:


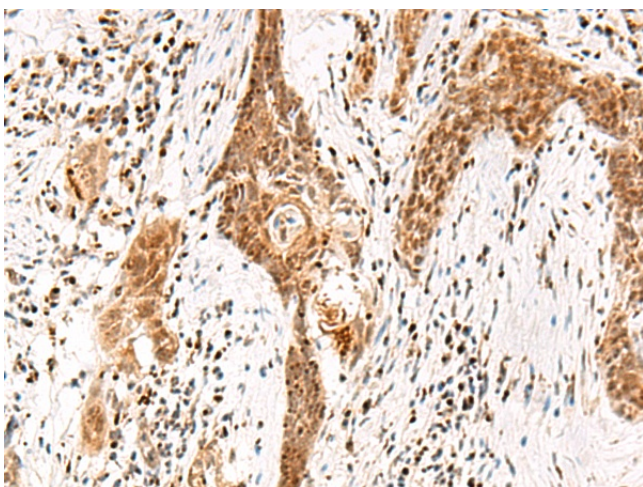
Gel: 12%SDS-PAGE
 Lysate: 40 μ g
 Lane 1-2: Human fetal liver tissue and 293T cell lysates
 Primary antibody: TA370520 (DGCR6L Antibody) at dilution 1/800
 Secondary antibody: Goat anti rabbit IgG at 1/5000 dilution
 Exposure time: 1 minute



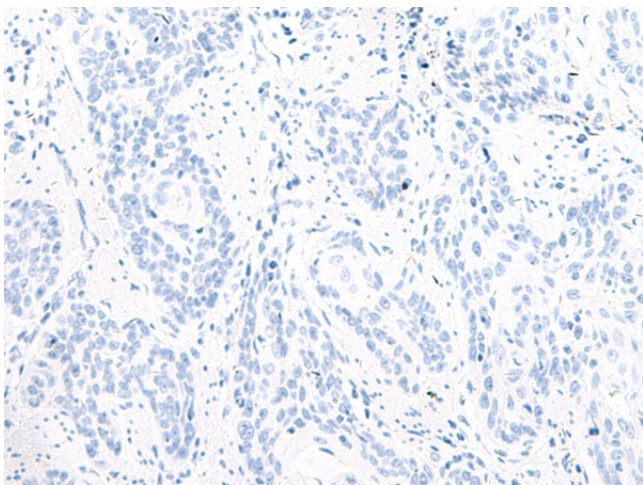
Immunohistochemistry of paraffin-embedded Human thyroid cancer tissue using TA370520 (DGCR6L Antibody) at dilution 1/65 (Original magnification: \times 200)



Immunohistochemistry of paraffin-embedded Human thyroid cancer tissue using TA370520 (DGCR6L Antibody) at dilution 1/65, treated with fusion protein. (Original magnification: $\times 200$)



Immunohistochemistry of paraffin-embedded Human esophagus cancer tissue using TA370520 (DGCR6L Antibody) at dilution 1/65 (Original magnification: $\times 200$)



Immunohistochemistry of paraffin-embedded Human esophagus cancer tissue using TA370520 (DGCR6L Antibody) at dilution 1/65, treated with fusion protein. (Original magnification: $\times 200$)