

Product datasheet for **TA370516**

SEC22L1 (SEC22B) Rabbit Polyclonal Antibody

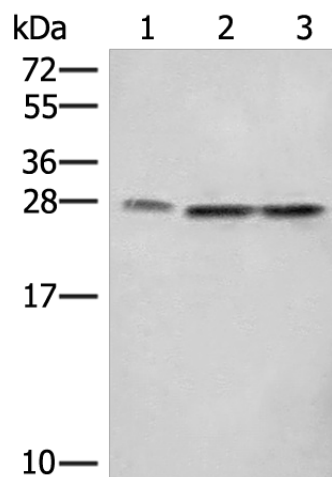
Product data:

Product Type:	Primary Antibodies
Applications:	IHC, WB
Recommended Dilution:	WB: 500-2000 WB positive control: A172, LOVO and Hela cell lysates IHC: 50-300 Positive control: Human tonsil Predicted cell location: Cell membrane
Reactivity:	Human, Mouse, Rat
Host:	Rabbit
Isotype:	IgG
Clonality:	Polyclonal
Immunogen:	Fusion protein of human SEC22B
Formulation:	pH7.4 PBS, 0.05% NaN ₃ , 40% Glycerol
Concentration:	lot specific
Purification:	Antigen affinity purification
Conjugation:	Unconjugated
Storage:	Store at -20°C.
Stability:	1 year
Predicted Protein Size:	25 kDa
Gene Name:	SEC22 homolog B, vesicle trafficking protein (gene/pseudogene)
Database Link:	Entrez Gene 9554 Human O75396
Background:	The protein encoded by this gene is a member of the SEC22 family of vesicle trafficking proteins. It seems to complex with SNARE and it is thought to play a role in the ER-Golgi protein trafficking. This protein has strong similarity to Mus musculus and Cricetulus griseus proteins.
Synonyms:	ERS-24; ERS24; OTTHUMP00000205451; SEC22L1

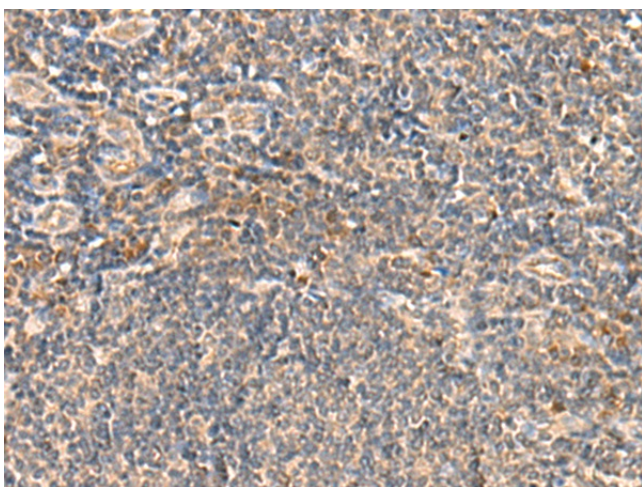


[View online »](#)

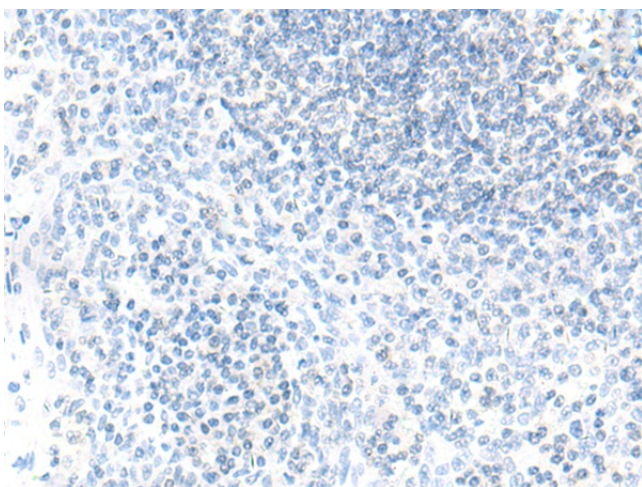
Product images:



Gel: 12%SDS-PAGE
Lysate: 40 μ g
Lane 1-3: A172
LOVO and HeLa cell lysates
Primary antibody: TA370516 (SEC22B Antibody)
at dilution 1/450
Secondary antibody: Goat anti rabbit IgG at
1/8000 dilution
Exposure time: 10 seconds



Immunohistochemistry of paraffin-embedded
Human tonsil tissue using TA370516 (SEC22B
Antibody) at dilution 1/60 (Original magnification:
 $\times 200$)



Immunohistochemistry of paraffin-embedded Human tonsil tissue using TA370516 (SEC22B Antibody) at dilution 1/60, treated with fusion protein. (Original magnification: x200)