

Product datasheet for **TA370515**

HS1BP3 Rabbit Polyclonal Antibody

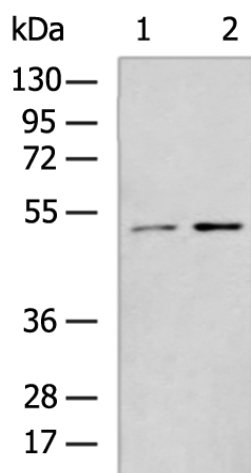
Product data:

Product Type:	Primary Antibodies
Applications:	IHC, WB
Recommended Dilution:	WB: 500-2000 WB positive control: A549 and NIH/3T3 cell lysates IHC: 150-300 Positive control: Human liver cancer Predicted cell location: Cytoplasm
Reactivity:	Human, Mouse
Host:	Rabbit
Isotype:	IgG
Clonality:	Polyclonal
Immunogen:	Fusion protein of human HS1BP3
Formulation:	pH7.4 PBS, 0.05% NaN ₃ , 40% Glycerol
Concentration:	lot specific
Purification:	Antigen affinity purification
Conjugation:	Unconjugated
Storage:	Store at -20°C.
Stability:	1 year
Predicted Protein Size:	43 kDa
Gene Name:	HCLS1 binding protein 3
Database Link:	Entrez Gene 64342 Human Q53T59
Background:	The protein encoded by this gene shares similarity with mouse Hs1bp3, an Hcls1/Hs1-interacting protein that may be involved in lymphocyte activation.
Synonyms:	ETM2; FLJ14249; HS1-BP3; HSP1BP-3

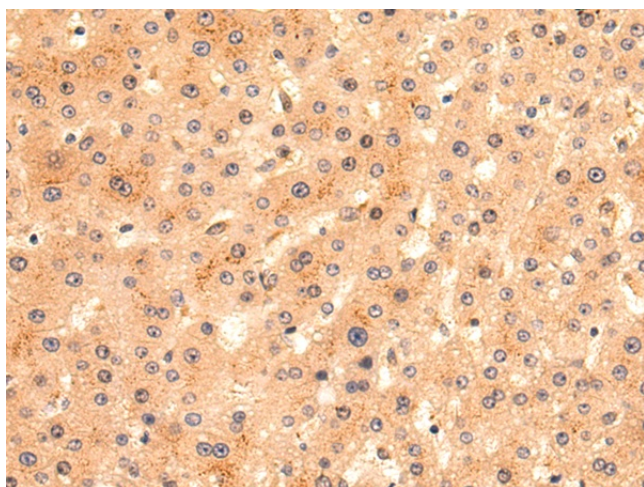


[View online »](#)

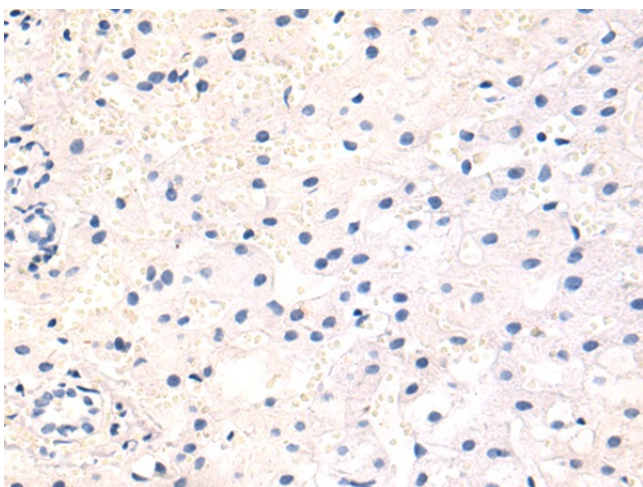
Product images:



Gel: 8%SDS-PAGE
Lysate: 40 μ g
Lane 1-2: A549 and NIH/3T3 cell lysates
Primary antibody: TA370515 (HS1BP3 Antibody)
at dilution 1/1000
Secondary antibody: Goat anti rabbit IgG at
1/5000 dilution
Exposure time: 1 minute



Immunohistochemistry of paraffin-embedded
Human liver cancer tissue using TA370515
(HS1BP3 Antibody) at dilution 1/140 (Original
magnification: \times 200)



Immunohistochemistry of paraffin-embedded Human liver cancer tissue using TA370515 (HS1BP3 Antibody) at dilution 1/140, treated with fusion protein. (Original magnification: ×200)