

## Product datasheet for **TA370514S**

### RPL13 Rabbit Polyclonal Antibody

#### Product data:

Product Type:	Primary Antibodies
Applications:	IHC, WB
Recommended Dilution:	WB: 500-2000 WB positive control: A549 cell lysate IHC: 100-200 Positive control: Human gastric cancer Predicted cell location: Cytoplasm and Nucleus
Reactivity:	Human, Mouse, Rat
Host:	Rabbit
Isotype:	IgG
Clonality:	Polyclonal
Immunogen:	Fusion protein of human RPL13
Formulation:	pH7.4 PBS, 0.05% NaN <sub>3</sub> , 40% Glycerol
Purification:	Antigen affinity purification
Conjugation:	Unconjugated
Storage:	Store at -20°C.
Stability:	1 year
Predicted Protein Size:	24 kDa
Gene Name:	ribosomal protein L13
Database Link:	<a href="#">Entrez Gene 6137 Human P26373</a>



[View online »](#)

**Background:**

Ribosomes, the organelles that catalyze protein synthesis, consist of a small 40S subunit and a large 60S subunit. Together these subunits are composed of 4 RNA species and approximately 80 structurally distinct proteins. This gene encodes a ribosomal protein that is a component of the 60S subunit. The protein belongs to the L13E family of ribosomal proteins. It is located in the cytoplasm. This gene is expressed at significantly higher levels in benign breast lesions than in breast carcinomas. Alternatively spliced transcript variants encoding distinct isoforms have been found for this gene. As is typical for genes encoding ribosomal proteins, there are multiple processed pseudogenes of this gene dispersed through the genome.

**Synonyms:**

BBC1; D16S444E; FLJ27453; FLJ27454; MGC71373; MGC117342; OK/SW-cl.46

**Product images:**

kDa

95—  
72—  
55—  
36—  
28—  
17—  
10—

Gel: 12%SDS-PAGE

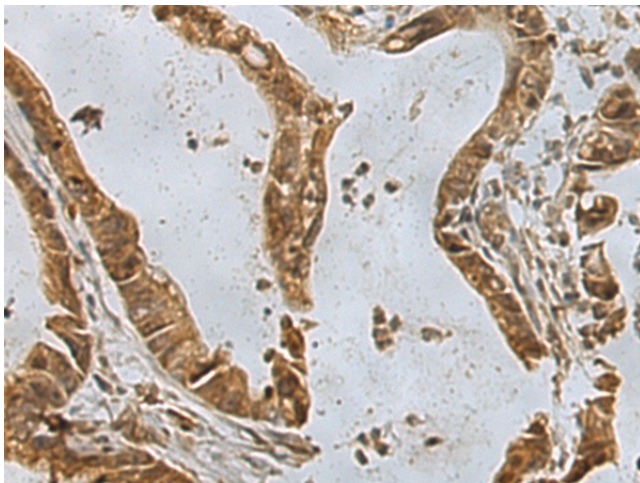
Lysate: 40 µg

Lane: A549 cell lysate

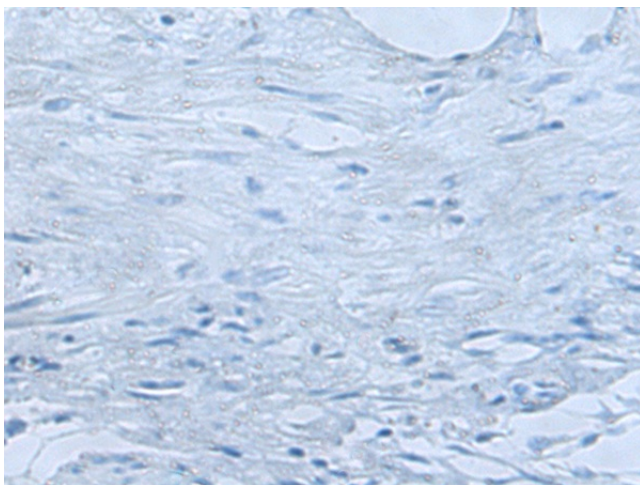
Primary antibody: [TA370514] (RPL13 Antibody)  
at dilution 1/600

Secondary antibody: Goat anti rabbit IgG at  
1/5000 dilution

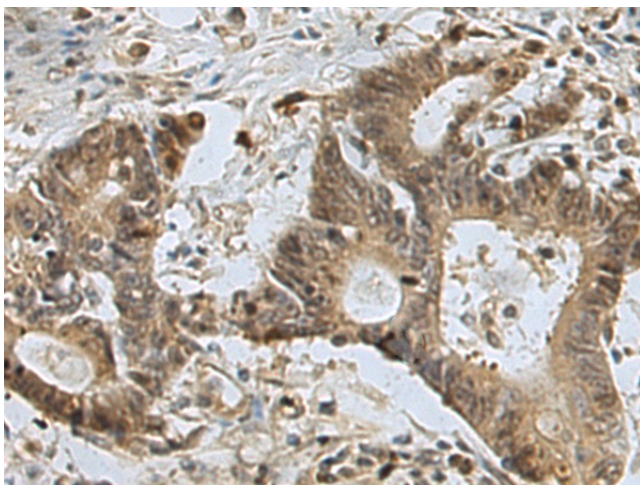
Exposure time: 10 seconds



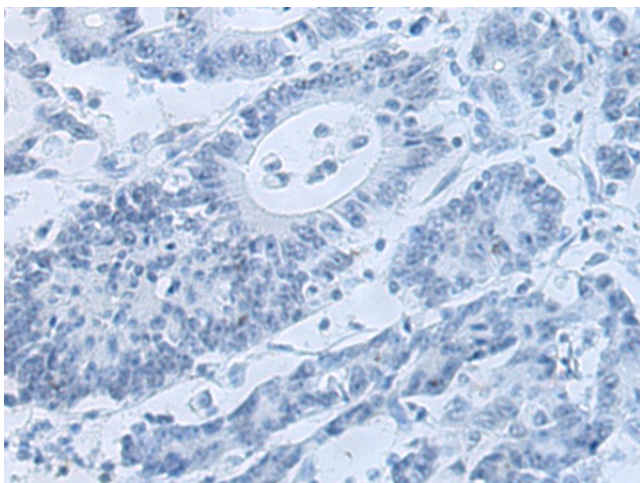
Immunohistochemistry of paraffin-embedded  
Human gastric cancer tissue using [TA370514]  
(RPL13 Antibody) at dilution 1/80 (Original  
magnification: ×200)



Immunohistochemistry of paraffin-embedded Human gastric cancer tissue using [TA370514] (RPL13 Antibody) at dilution 1/80, treated with fusion protein. (Original magnification:  $\times 200$ )



Immunohistochemistry of paraffin-embedded Human colorectal cancer tissue using [TA370514] (RPL13 Antibody) at dilution 1/80 (Original magnification:  $\times 200$ )



Immunohistochemistry of paraffin-embedded Human colorectal cancer tissue using [TA370514] (RPL13 Antibody) at dilution 1/80, treated with fusion protein. (Original magnification:  $\times 200$ )