

Product datasheet for **TA370497S**

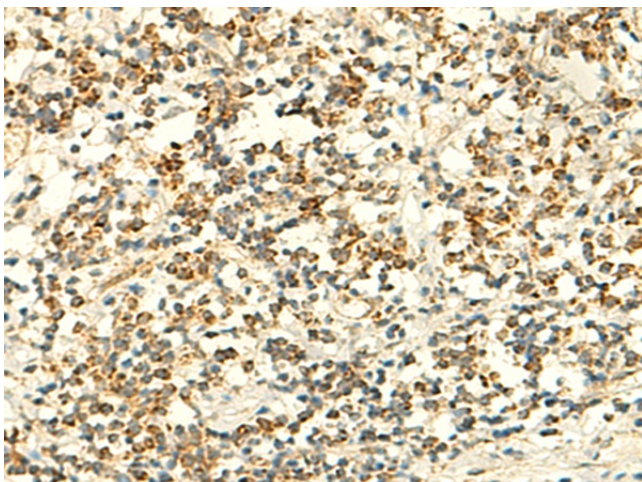
RABL4 (IFT27) Rabbit Polyclonal Antibody

Product data:

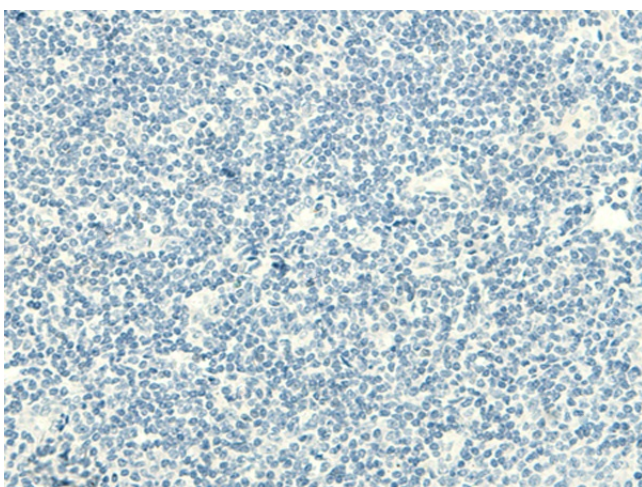
| | |
|-----------------------|--|
| Product Type: | Primary Antibodies |
| Applications: | IHC |
| Recommended Dilution: | IHC: 50-300 Positive control: Human tonsil Predicted cell location: Cytoplasm |
| Reactivity: | Human, Mouse |
| Host: | Rabbit |
| Isotype: | IgG |
| Clonality: | Polyclonal |
| Immunogen: | Fusion protein of human IFT27 |
| Formulation: | pH7.4 PBS, 0.05% NaN ₃ , 40% Glycerol |
| Purification: | Antigen affinity purification |
| Conjugation: | Unconjugated |
| Storage: | Store at -20°C. |
| Stability: | 1 year |
| Gene Name: | intraflagellar transport 27 |
| Database Link: | Entrez Gene 11020 Human Q9BW83 |
| Background: | This gene encodes a GTP-binding protein that is a core component of the intraflagellar transport complex B. Characterization of the similar Chlamydomonas protein indicates a function in cell cycle control. Alternative splicing of this gene results in multiple transcript variants. |
| Synonyms: | 2600013G09Rik; Rabl4 |



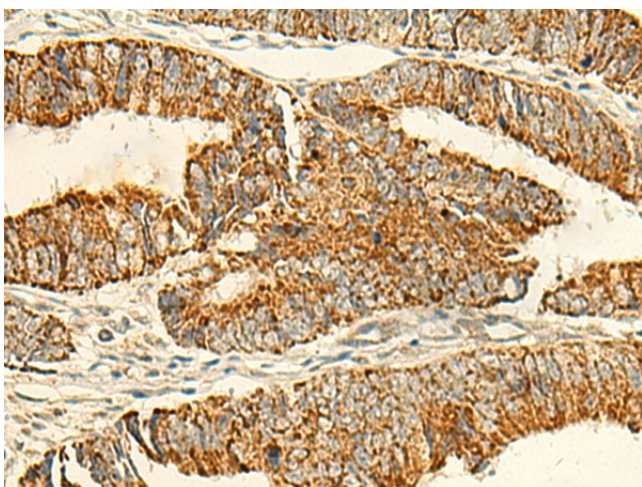
[View online »](#)

Product images:

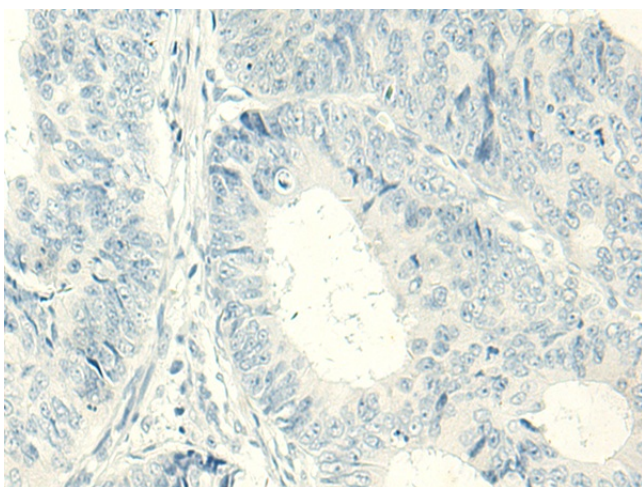
Immunohistochemistry of paraffin-embedded Human tonsil tissue using [TA370497] (IFT27 Antibody) at dilution 1/50 (Original magnification: ×200)



Immunohistochemistry of paraffin-embedded Human tonsil tissue using [TA370497] (IFT27 Antibody) at dilution 1/50, treated with fusion protein. (Original magnification: ×200)



Immunohistochemistry of paraffin-embedded Human colorectal cancer tissue using [TA370497] (IFT27 Antibody) at dilution 1/50 (Original magnification: $\times 200$)



Immunohistochemistry of paraffin-embedded Human colorectal cancer tissue using [TA370497] (IFT27 Antibody) at dilution 1/50, treated with fusion protein. (Original magnification: $\times 200$)