

Product datasheet for **TA370495**

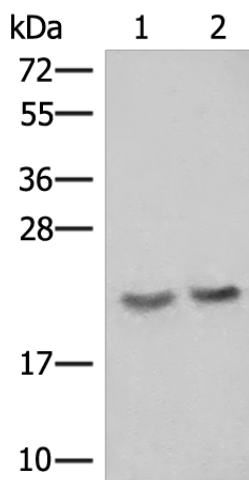
RABL5 (IFT22) Rabbit Polyclonal Antibody

Product data:

Product Type:	Primary Antibodies
Applications:	IHC, WB
Recommended Dilution:	WB: 200-1000 WB positive control: A172, A549 cell lysates IHC: 50-300 Positive control: Human tonsil Predicted cell location: Cytoplasm
Reactivity:	Human, Mouse, Rat
Host:	Rabbit
Isotype:	IgG
Clonality:	Polyclonal
Immunogen:	Fusion protein of human IFT22
Formulation:	pH7.4 PBS, 0.05% NaN ₃ , 40% Glycerol
Concentration:	lot specific
Purification:	Antigen affinity purification
Conjugation:	Unconjugated
Storage:	Store at -20°C.
Stability:	1 year
Predicted Protein Size:	21 kDa
Gene Name:	intraflagellar transport 22
Database Link:	Entrez Gene 64792 Human Q9H7X7
Background:	Small GTPase-like component of the intraflagellar transport (IFT) complex B.



[View online »](#)

Product images:

Gel: 12%SDS-PAGE

Lysate: 40 µg

Lane 1-2: A172

A549 cell lysates

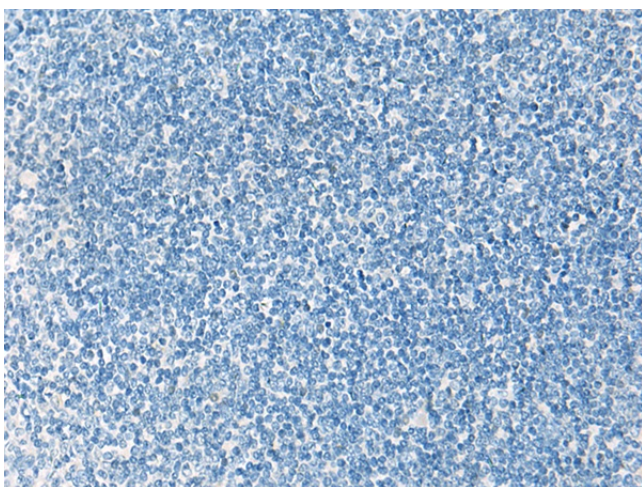
Primary antibody: TA370495 (IFT22 Antibody) at dilution 1/250

Secondary antibody: Goat anti rabbit IgG at 1/8000 dilution

Exposure time: 1 minute



Immunohistochemistry of paraffin-embedded Human tonsil tissue using TA370495 (IFT22 Antibody) at dilution 1/50 (Original magnification: ×200)



Immunohistochemistry of paraffin-embedded Human tonsil tissue using TA370495 (IFT22 Antibody) at dilution 1/50, treated with fusion protein. (Original magnification: x200)