

Product datasheet for **TA370473S**

PFDN2 Rabbit Polyclonal Antibody

Product data:

Product Type: Primary Antibodies
Applications: IHC
Recommended Dilution: IHC: 25-100
Positive control: Human lung cancer
Predicted cell location: Cytoplasm and Nucleus

Reactivity: Human, Mouse, Rat

Host: Rabbit

Isotype: IgG

Clonality: Polyclonal

Immunogen: Fusion protein of human PFDN2

Formulation: pH7.4 PBS, 0.05% NaN₃, 40% Glycerol

Purification: Antigen affinity purification

Conjugation: Unconjugated

Storage: Store at -20°C.

Stability: 1 year

Gene Name: prefoldin subunit 2

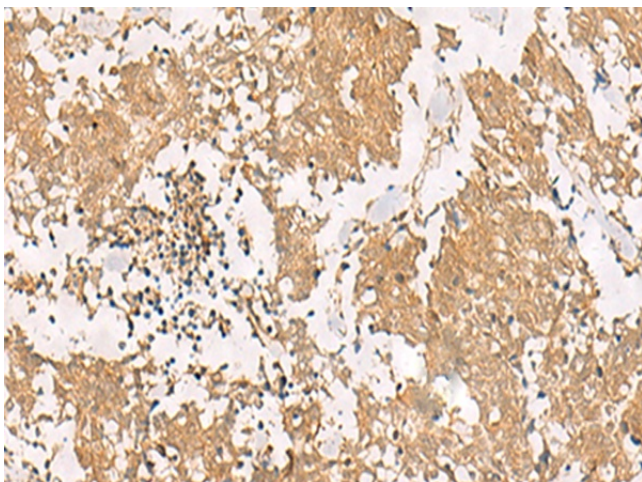
Database Link: [Entrez Gene 5202 Human Q9UHV9](#)

Background: This gene encodes a member of the prefoldin beta subunit family. The encoded protein is one of six subunits of prefoldin, a molecular chaperone complex that binds and stabilizes newly synthesized polypeptides, thereby allowing them to fold correctly. The complex, consisting of two alpha and four beta subunits, forms a double beta barrel assembly with six protruding coiled-coils.

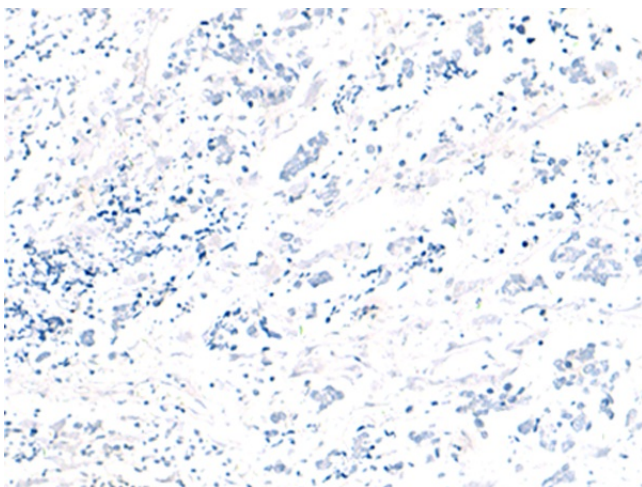
Synonyms: PFD2

[View online »](#)

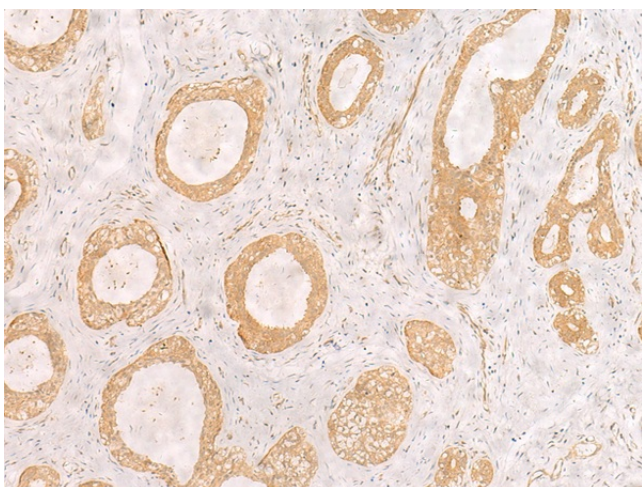
Product images:



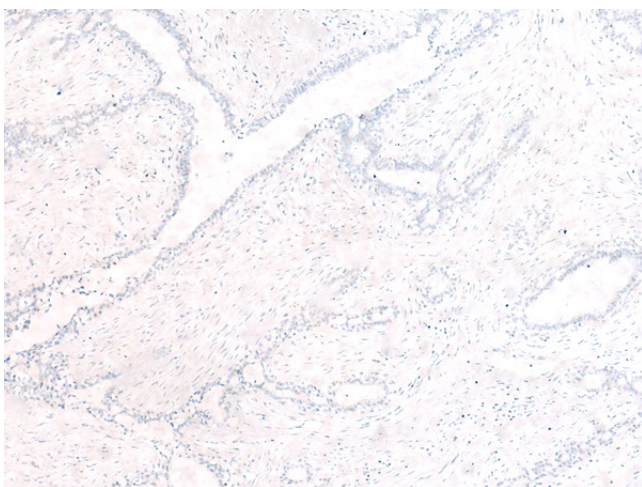
Immunohistochemistry of paraffin-embedded Human lung cancer tissue using [TA370473] (PFDN2 Antibody) at dilution 1/25 (Original magnification: ×200)



Immunohistochemistry of paraffin-embedded Human lung cancer tissue using [TA370473] (PFDN2 Antibody) at dilution 1/25, treated with fusion protein. (Original magnification: ×200)



Immunohistochemistry of paraffin-embedded Human breast cancer tissue using [TA370473] (PFDN2 Antibody) at dilution 1/25 (Original magnification: ×200)



Immunohistochemistry of paraffin-embedded Human breast cancer tissue using [TA370473] (PFDN2 Antibody) at dilution 1/25, treated with fusion protein. (Original magnification: ×200)