

Product datasheet for **TA370471S**

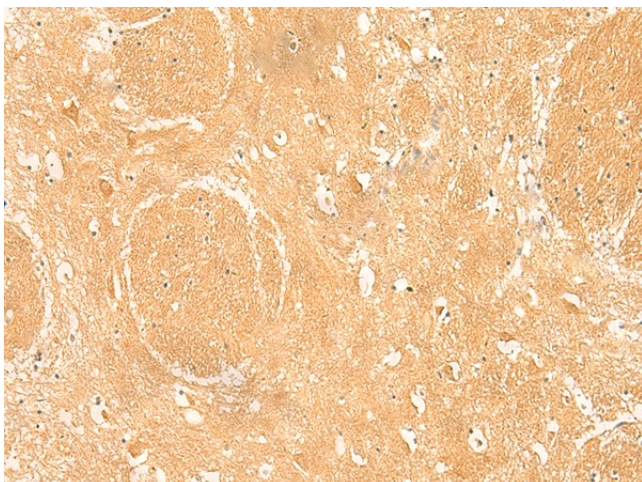
ARPC5L Rabbit Polyclonal Antibody

Product data:

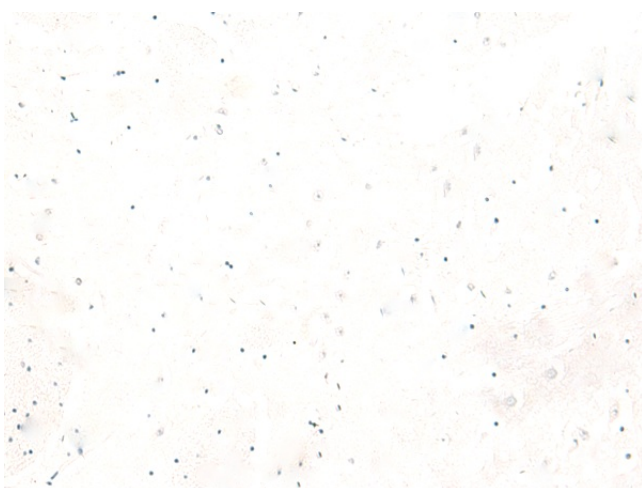
Product Type:	Primary Antibodies
Applications:	IHC
Recommended Dilution:	IHC: 30-150 Positive control: Human brain Predicted cell location: Cytoplasm
Reactivity:	Human, Mouse, Rat
Host:	Rabbit
Isotype:	IgG
Clonality:	Polyclonal
Immunogen:	Fusion protein of human ARPC5L
Formulation:	pH7.4 PBS, 0.05% NaN ₃ , 40% Glycerol
Purification:	Antigen affinity purification
Conjugation:	Unconjugated
Storage:	Store at -20°C.
Stability:	1 year
Gene Name:	actin related protein 2/3 complex subunit 5-like
Database Link:	Entrez Gene 81873 Human Q9BPX5
Background:	May function as component of the Arp2/3 complex which is involved in regulation of actin polymerization and together with an activating nucleation-promoting factor (NPF) mediates the formation of branched actin networks.
Synonyms:	ARC16-2; MGC3038; OTTHUMP00000022111



[View online »](#)

Product images:

Immunohistochemistry of paraffin-embedded Human brain tissue using [TA370471] (ARPC5L Antibody) at dilution 1/30 (Original magnification: ×200)



Immunohistochemistry of paraffin-embedded Human brain tissue using [TA370471] (ARPC5L Antibody) at dilution 1/30, treated with fusion protein. (Original magnification: ×200)