

Product datasheet for **TA370468S**

RNF24 Rabbit Polyclonal Antibody

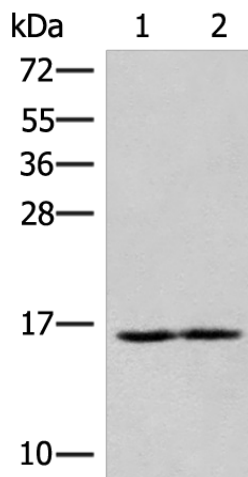
Product data:

Product Type:	Primary Antibodies
Applications:	IHC, WB
Recommended Dilution:	WB: 200-1000 WB positive control: K562 and HL60 cell lysates IHC: 20-100 Positive control: Human tonsil Predicted cell location: Cytoplasm
Reactivity:	Human, Mouse
Host:	Rabbit
Isotype:	IgG
Clonality:	Polyclonal
Immunogen:	Fusion protein of human RNF24
Formulation:	pH7.4 PBS, 0.05% NaN ₃ , 40% Glycerol
Purification:	Antigen affinity purification
Conjugation:	Unconjugated
Storage:	Store at -20°C.
Stability:	1 year
Predicted Protein Size:	17 kDa
Gene Name:	ring finger protein 24
Database Link:	Entrez Gene 11237 Human Q9Y225
Background:	This gene encodes an integral membrane protein that contains a RING-type zinc finger. The encoded protein may interact with multiple transient receptor potential cation channel subfamily C (TRPC) proteins and regulate the trafficking and insertion of these proteins into the plasma membrane.
Synonyms:	G1L

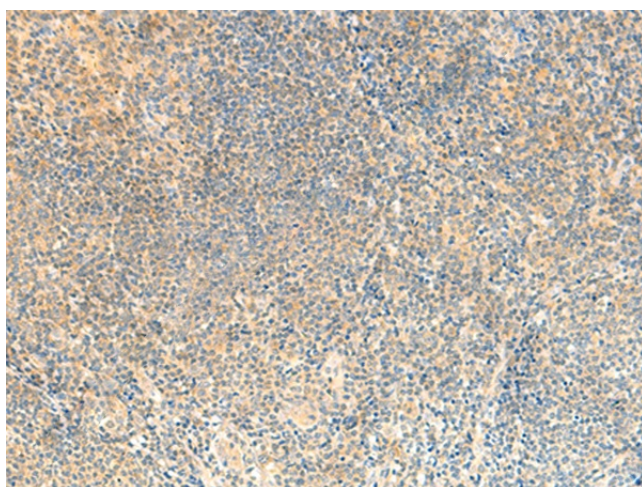


[View online »](#)

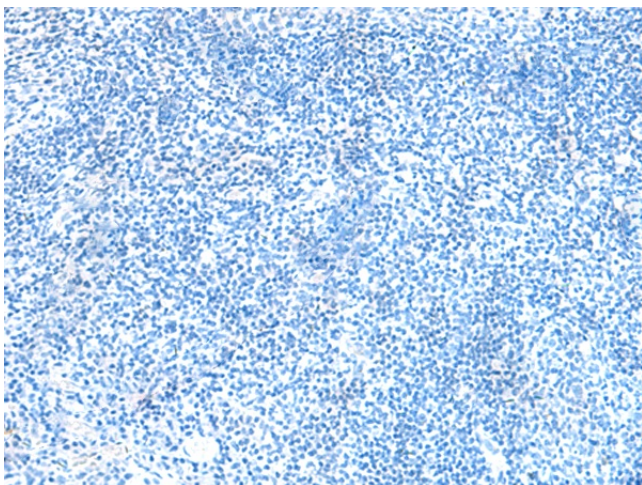
Product images:



Gel: 12%SDS-PAGE
Lysate: 40 μ g
Lane 1-2: K562 and HL60 cell lysates
Primary antibody: [TA370468] (RNF24 Antibody) at dilution 1/250
Secondary antibody: Goat anti rabbit IgG at 1/8000 dilution
Exposure time: 30 seconds



Immunohistochemistry of paraffin-embedded Human tonsil tissue using [TA370468] (RNF24 Antibody) at dilution 1/25 (Original magnification: $\times 200$)



Immunohistochemistry of paraffin-embedded Human tonsil tissue using [TA370468] (RNF24 Antibody) at dilution 1/25, treated with fusion protein. (Original magnification: $\times 200$)