

## Product datasheet for **TA370467**

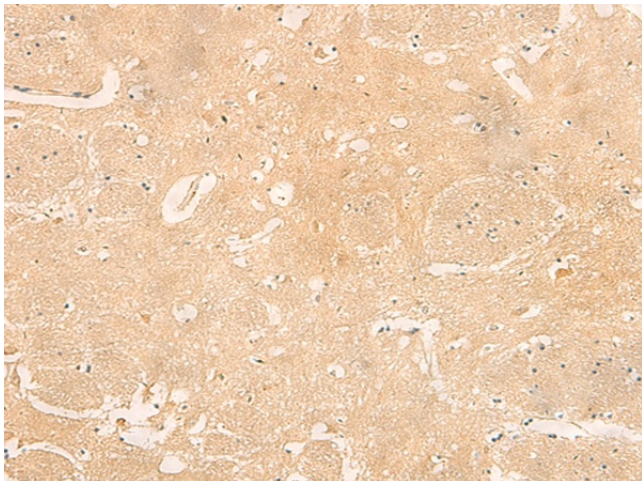
### **RNASE4 Rabbit Polyclonal Antibody**

#### **Product data:**

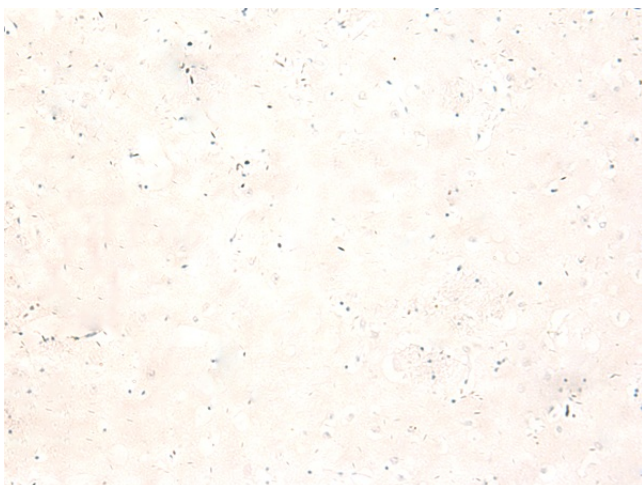
Product Type:	Primary Antibodies
Applications:	IHC
Recommended Dilution:	IHC: 25-100 Positive control: Human brain Predicted cell location: Secreted
Reactivity:	Human, Mouse, Rat
Host:	Rabbit
Isotype:	IgG
Clonality:	Polyclonal
Immunogen:	Fusion protein of human RNASE4
Formulation:	pH7.4 PBS, 0.05% NaN <sub>3</sub> , 40% Glycerol
Concentration:	lot specific
Purification:	Antigen affinity purification
Conjugation:	Unconjugated
Storage:	Store at -20°C.
Stability:	1 year
Gene Name:	ribonuclease A family member 4
Database Link:	<a href="#">Entrez Gene 6038 Human P34096</a>
Background:	The protein encoded by this gene belongs to the pancreatic ribonuclease family. It plays an important role in mRNA cleavage and has marked specificity towards the 3' side of uridine nucleotides. Alternative splicing results in four transcript variants encoding the same protein. This gene and the gene that encodes angiogenin share promoters and 5' exons. Each gene splices to a unique downstream exon that contains its complete coding region.
Synonyms:	MGC9306; OTTHUMP00000164022; OTTHUMP00000164023; RNS4



[View online »](#)

**Product images:**

Immunohistochemistry of paraffin-embedded Human brain tissue using TA370467 (RNASE4 Antibody) at dilution 1/30 (Original magnification: ×200)



Immunohistochemistry of paraffin-embedded Human brain tissue using TA370467 (RNASE4 Antibody) at dilution 1/30, treated with fusion protein. (Original magnification: ×200)