

## Product datasheet for **TA370464**

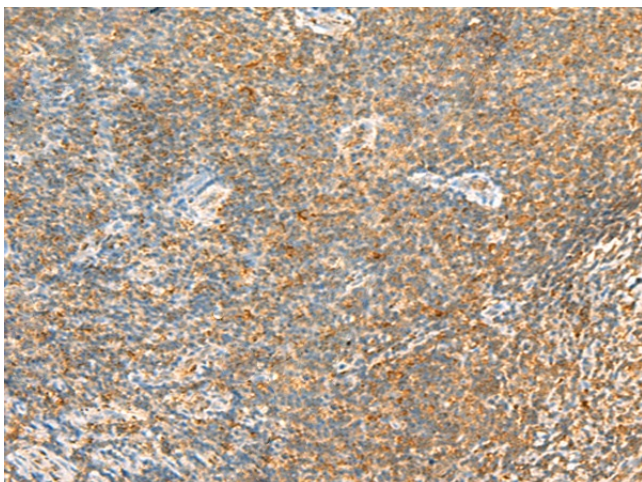
### **MTHFD2 (MTHFD2L) Rabbit Polyclonal Antibody**

#### **Product data:**

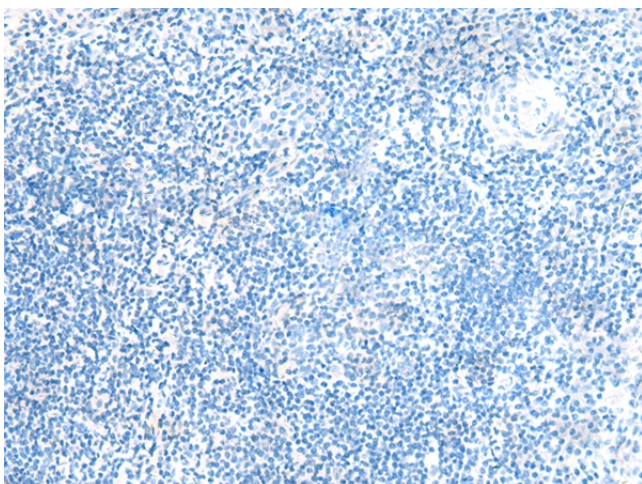
Product Type:	Primary Antibodies
Applications:	IHC
Recommended Dilution:	IHC: 30-150 Positive control: Human tonsil Predicted cell location: Cytoplasm or Nucleus
Reactivity:	Human, Mouse, Rat
Host:	Rabbit
Isotype:	IgG
Clonality:	Polyclonal
Immunogen:	Fusion protein of human MTHFD2L
Formulation:	pH7.4 PBS, 0.05% NaN <sub>3</sub> , 40% Glycerol
Concentration:	lot specific
Purification:	Antigen affinity purification
Conjugation:	Unconjugated
Storage:	Store at -20°C.
Stability:	1 year
Gene Name:	methylenetetrahydrofolate dehydrogenase (NADP+ dependent) 2-like
Database Link:	<a href="#">Entrez Gene 441024 Human Q9H903</a>
Background:	The specific function of this protein remains unknown.
Synonyms:	FLJ13105; MGC45532; MGC72244



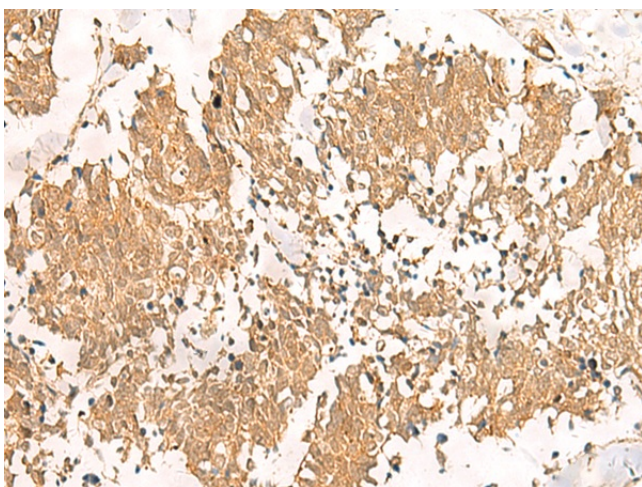
[View online »](#)

**Product images:**

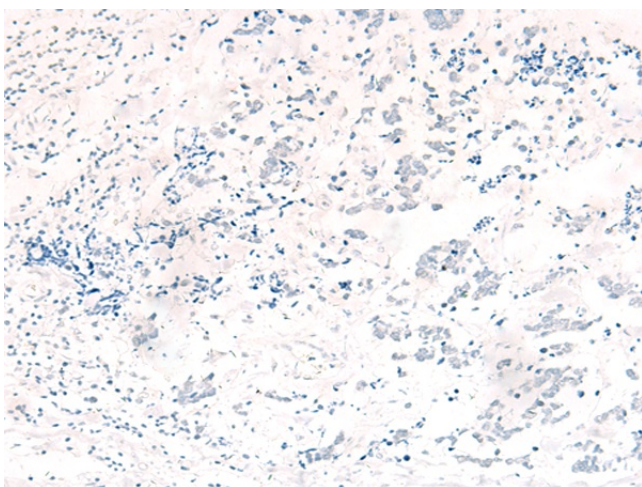
Immunohistochemistry of paraffin-embedded Human tonsil tissue using TA370464 (MTHFD2L Antibody) at dilution 1/30 (Original magnification: ×200)



Immunohistochemistry of paraffin-embedded Human tonsil tissue using TA370464 (MTHFD2L Antibody) at dilution 1/30, treated with fusion protein. (Original magnification: ×200)



Immunohistochemistry of paraffin-embedded Human lung cancer tissue using TA370464 (MTHFD2L Antibody) at dilution 1/30 (Original magnification:  $\times 200$ )



Immunohistochemistry of paraffin-embedded Human lung cancer tissue using TA370464 (MTHFD2L Antibody) at dilution 1/30, treated with fusion protein. (Original magnification:  $\times 200$ )