

Product datasheet for **TA370453S**

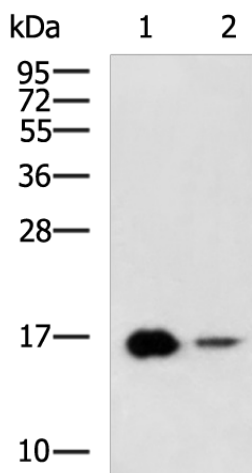
LBH Rabbit Polyclonal Antibody

Product data:

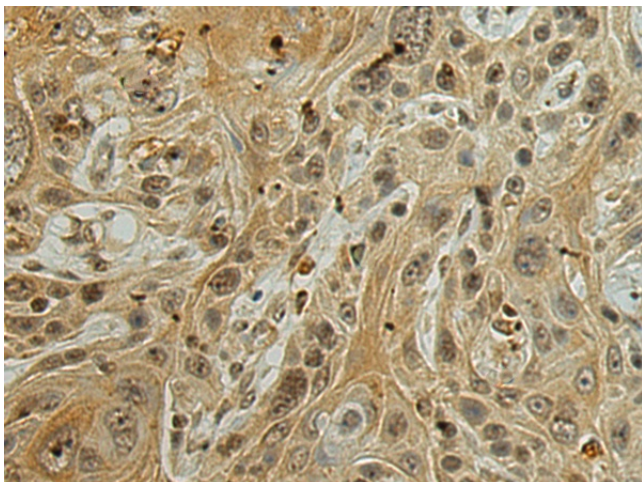
Product Type:	Primary Antibodies
Applications:	IHC, WB
Recommended Dilution:	WB: 500-2000 WB positive control: Rat heart tissue, Mouse skeletal muscle tissue lysates IHC: 50-200 Positive control: Human esophagus cancer Predicted cell location: Nucleus
Reactivity:	Human, Mouse, Rat
Host:	Rabbit
Isotype:	IgG
Clonality:	Polyclonal
Immunogen:	Fusion protein of human LBH
Formulation:	pH7.4 PBS, 0.05% NaN ₃ , 40% Glycerol
Purification:	Antigen affinity purification
Conjugation:	Unconjugated
Storage:	Store at -20°C.
Stability:	1 year
Predicted Protein Size:	12 kDa
Gene Name:	limb bud and heart development
Database Link:	Entrez Gene 81606 Human Q53QV2
Background:	Transcriptional activator which may act in mitogen-activated protein kinase signaling pathway.
Synonyms:	DKFZp566J091; hLBH; MGC104312; MGC163287



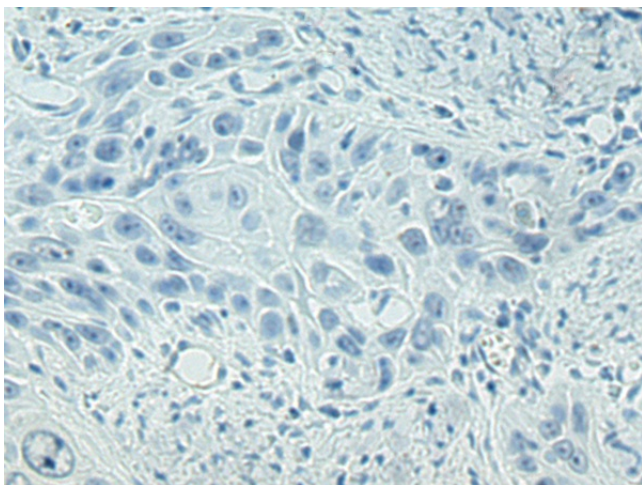
[View online »](#)

Product images:


Gel: 12%SDS-PAGE
 Lysate: 40 µg
 Lane 1-2: Rat heart tissue
 Mouse skeletal muscle tissue lysates
 Primary antibody: [TA370453] (LBH Antibody) at
 dilution 1/800
 Secondary antibody: Goat anti rabbit IgG at
 1/5000 dilution
 Exposure time: 5 minutes



Immunohistochemistry of paraffin-embedded
 Human esophagus cancer tissue using
 [TA370453] (LBH Antibody) at dilution 1/120
 (Original magnification: ×200)



Immunohistochemistry of paraffin-embedded Human esophagus cancer tissue using [TA370453] (LBH Antibody) at dilution 1/120, treated with fusion protein. (Original magnification: ×200)