

Product datasheet for **TA370453**

LBH Rabbit Polyclonal Antibody

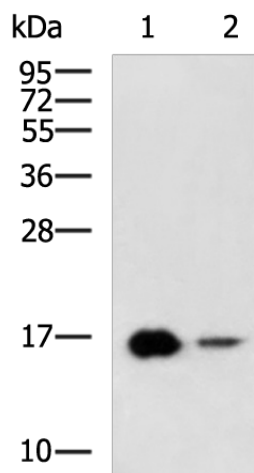
Product data:

Product Type:	Primary Antibodies
Applications:	IHC, WB
Recommended Dilution:	WB: 500-2000 WB positive control: Rat heart tissue, Mouse skeletal muscle tissue lysates IHC: 50-200 Positive control: Human esophagus cancer Predicted cell location: Nucleus
Reactivity:	Human, Mouse, Rat
Host:	Rabbit
Isotype:	IgG
Clonality:	Polyclonal
Immunogen:	Fusion protein of human LBH
Formulation:	pH7.4 PBS, 0.05% NaN ₃ , 40% Glycerol
Concentration:	lot specific
Purification:	Antigen affinity purification
Conjugation:	Unconjugated
Storage:	Store at -20°C.
Stability:	1 year
Predicted Protein Size:	12 kDa
Gene Name:	limb bud and heart development
Database Link:	Entrez Gene 81606 Human Q53QV2
Background:	Transcriptional activator which may act in mitogen-activated protein kinase signaling pathway.
Synonyms:	DKFZp566j091; hLBH; MGC104312; MGC163287

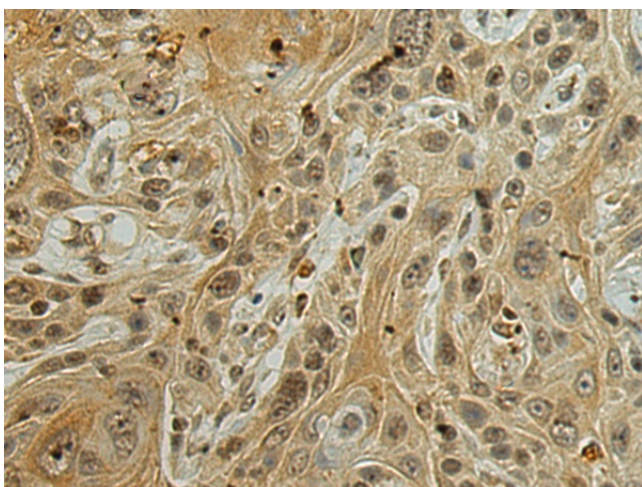


[View online »](#)

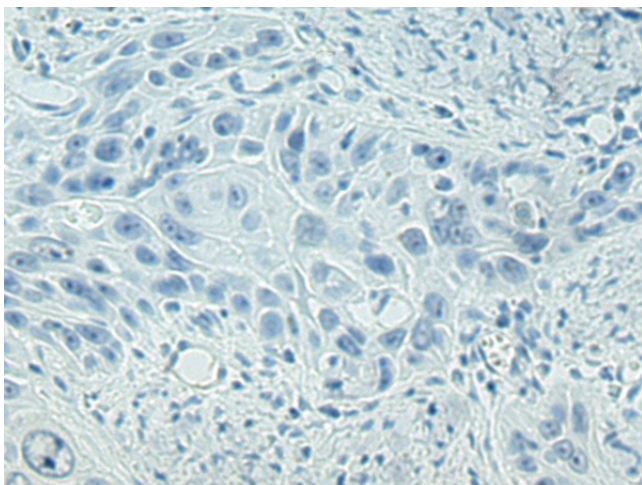
Product images:



Gel: 12%SDS-PAGE
Lysate: 40 μ g
Lane 1-2: Rat heart tissue
Mouse skeletal muscle tissue lysates
Primary antibody: TA370453 (LBH Antibody) at dilution 1/800
Secondary antibody: Goat anti rabbit IgG at 1/5000 dilution
Exposure time: 5 minutes



Immunohistochemistry of paraffin-embedded Human esophagus cancer tissue using TA370453 (LBH Antibody) at dilution 1/120 (Original magnification: \times 200)



Immunohistochemistry of paraffin-embedded Human esophagus cancer tissue using TA370453 (LBH Antibody) at dilution 1/120, treated with fusion protein. (Original magnification: ×200)