

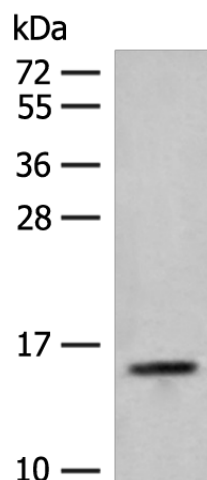
Product datasheet for **TA370450S**

RPP14 Rabbit Polyclonal Antibody

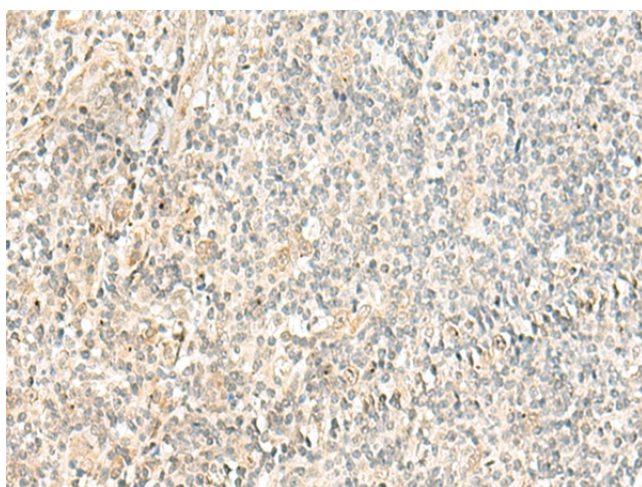
Product data:

Product Type:	Primary Antibodies
Applications:	IHC, WB
Recommended Dilution:	WB: 200-1000 WB positive control: Hela cell lysate IHC: 40-200 Positive control: Human tonsil Predicted cell location: Cytoplasm or Nucleus
Reactivity:	Human, Mouse
Host:	Rabbit
Isotype:	IgG
Clonality:	Polyclonal
Immunogen:	Fusion protein of human RPP14
Formulation:	pH7.4 PBS, 0.05% NaN ₃ , 40% Glycerol
Purification:	Antigen affinity purification
Conjugation:	Unconjugated
Storage:	Store at -20°C.
Stability:	1 year
Predicted Protein Size:	14 kDa
Gene Name:	ribonuclease P/MRP subunit p14
Database Link:	Entrez Gene 11102 Human O95059
Background:	This gene encodes a subunit of ribonuclease P and has 3' to 5' exoribonuclease activity. Transcripts for this gene are bicistronic and include a conserved downstream open reading frame for the hydroxyacyl-thioester dehydratase type 2 (HTD2) gene.
Synonyms:	FLJ31508; HsHTD2; P14

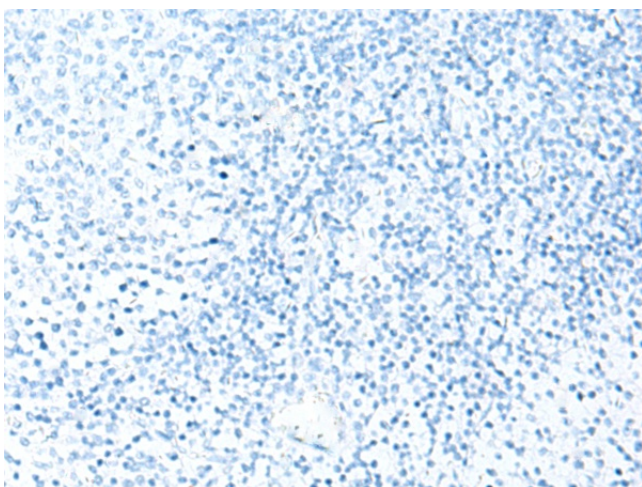
[View online »](#)

Product images:


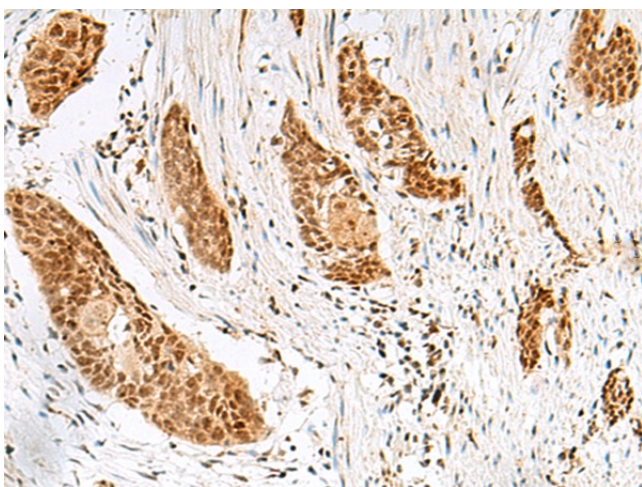
Gel: 12%SDS-PAGE
 Lysate: 40 µg
 Lane: HeLa cell lysate
 Primary antibody: [TA370450] (RPP14 Antibody)
 at dilution 1/250
 Secondary antibody: Goat anti rabbit IgG at
 1/8000 dilution
 Exposure time: 30 seconds



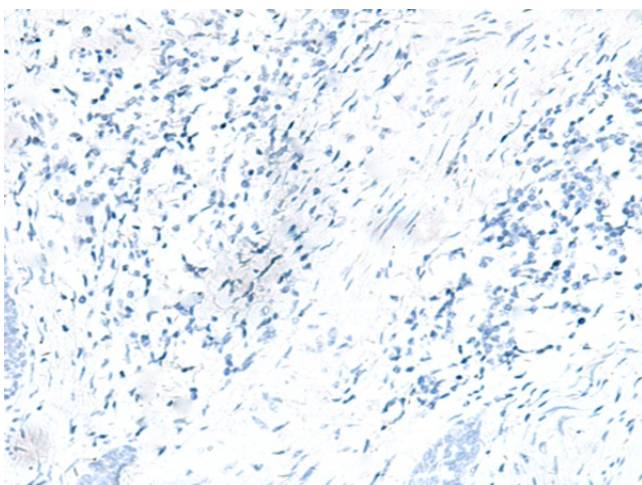
Immunohistochemistry of paraffin-embedded
 Human tonsil tissue using [TA370450] (RPP14
 Antibody) at dilution 1/40 (Original magnification:
 ×200)



Immunohistochemistry of paraffin-embedded Human tonsil tissue using [TA370450] (RPP14 Antibody) at dilution 1/40, treated with fusion protein. (Original magnification: ×200)



Immunohistochemistry of paraffin-embedded Human esophagus cancer tissue using [TA370450] (RPP14 Antibody) at dilution 1/40 (Original magnification: ×200)



Immunohistochemistry of paraffin-embedded Human esophagus cancer tissue using [TA370450] (RPP14 Antibody) at dilution 1/40, treated with fusion protein. (Original magnification: ×200)