

Product datasheet for **TA370442**

FKBP12 (FKBP1A) Rabbit Polyclonal Antibody

Product data:

Product Type:	Primary Antibodies
Applications:	IHC, WB
Recommended Dilution:	WB: 200-1000 WB positive control: Mouse brain tissue, Human fetal brain tissue and Jurkat cell lysates IHC: 40-200 Positive control: Human tonsil Predicted cell location: Cytoplasm
Reactivity:	Human, Mouse, Rat
Host:	Rabbit
Isotype:	IgG
Clonality:	Polyclonal
Immunogen:	Fusion protein of human FKBP1A
Formulation:	pH7.4 PBS, 0.05% NaN ₃ , 40% Glycerol
Concentration:	lot specific
Purification:	Antigen affinity purification
Conjugation:	Unconjugated
Storage:	Store at -20°C.
Stability:	1 year
Predicted Protein Size:	12 kDa
Gene Name:	FK506 binding protein 1A
Database Link:	Entrez Gene 2280 Human P62942



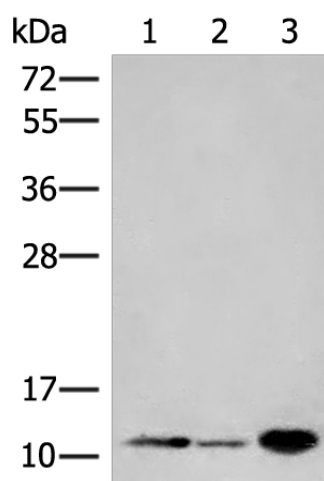
[View online »](#)

Background:

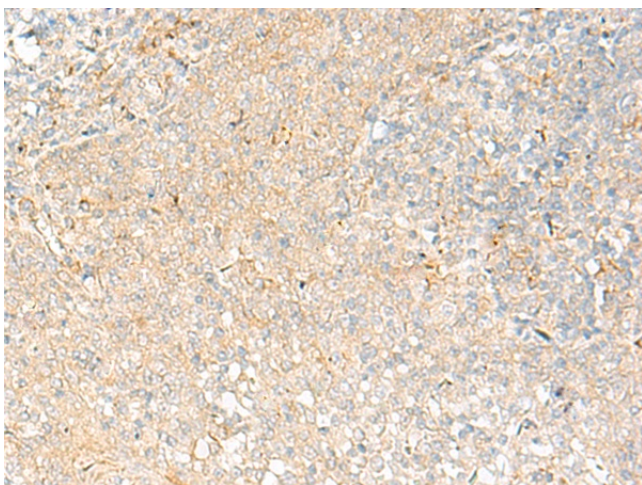
The protein encoded by this gene is a member of the immunophilin protein family, which play a role in immunoregulation and basic cellular processes involving protein folding and trafficking. The protein is a cis-trans prolyl isomerase that binds the immunosuppressants FK506 and rapamycin. It interacts with several intracellular signal transduction proteins including type I TGF-beta receptor. It also interacts with multiple intracellular calcium release channels, and coordinates multi-protein complex formation of the tetrameric skeletal muscle ryanodine receptor. In mouse, deletion of this homologous gene causes congenital heart disorder known as noncompaction of left ventricular myocardium. Multiple alternatively spliced variants, encoding the same protein, have been identified. The human genome contains five pseudogenes related to this gene, at least one of which is transcribed.

Synonyms:

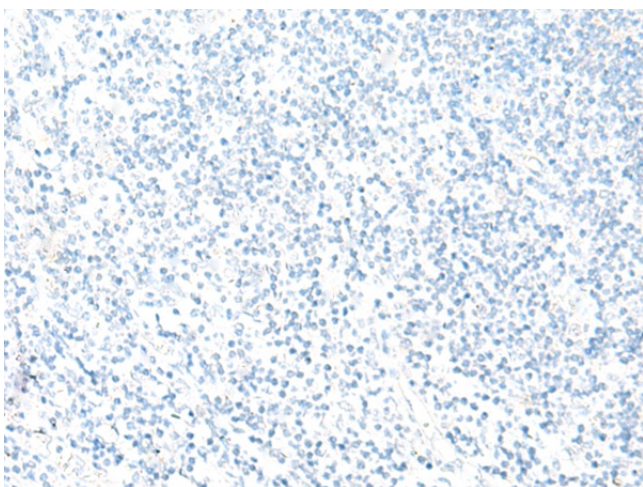
FKBP-1A; FKBP-12; FKBP1; FKBP12; FKBP12-Exip3; FKBP12C; PKC12; PKC12; PPIASE; rotamase

Product images:

Gel: 12%SDS-PAGE
Lysate: 40 µg
Lane 1-3: Mouse brain tissue
Human fetal brain tissue and Jurkat cell lysates
Primary antibody: TA370442 (FKBP1A Antibody)
at dilution 1/250
Secondary antibody: Goat anti rabbit IgG at
1/8000 dilution
Exposure time: 2 minutes



Immunohistochemistry of paraffin-embedded
Human tonsil tissue using TA370442 (FKBP1A
Antibody) at dilution 1/55 (Original magnification:
×200)



Immunohistochemistry of paraffin-embedded Human tonsil tissue using TA370442 (FKBP1A Antibody) at dilution 1/55, treated with fusion protein. (Original magnification: $\times 200$)