

## Product datasheet for **TA370439S**

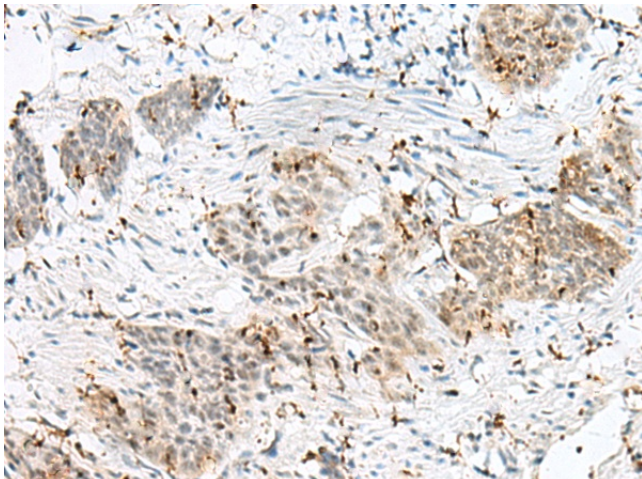
### PLCL2 Rabbit Polyclonal Antibody

#### Product data:

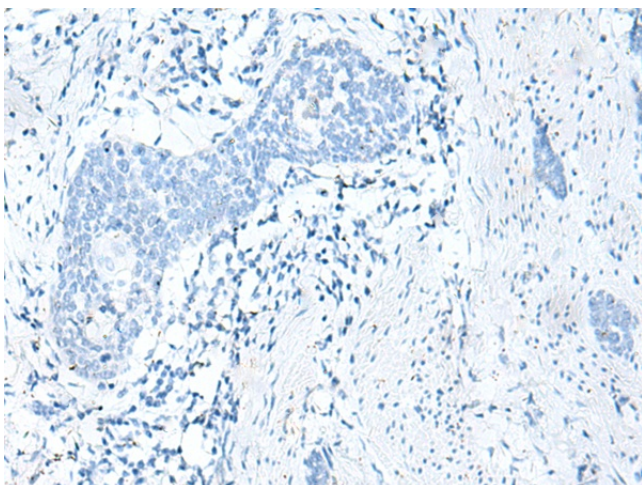
Product Type:	Primary Antibodies
Applications:	IHC
Recommended Dilution:	IHC: 25-100 Positive control: Human esophagus cancer Predicted cell location: Nucleus or Cytoplasm
Reactivity:	Human, Mouse
Host:	Rabbit
Isotype:	IgG
Clonality:	Polyclonal
Immunogen:	Fusion protein of human PLCL2
Formulation:	pH7.4 PBS, 0.05% NaN <sub>3</sub> , 40% Glycerol
Purification:	Antigen affinity purification
Conjugation:	Unconjugated
Storage:	Store at -20°C.
Stability:	1 year
Gene Name:	phospholipase C like 2
Database Link:	<a href="#">Entrez Gene 23228 Human Q9UPR0</a>
Background:	May play an role in the regulation of Ins(1,4,5)P <sub>3</sub> around the endoplasmic reticulum.
Synonyms:	FLJ13484; KIAA1092; OTTHUMP00000208053; PLC-L(2); PLC-L2; PLCE2



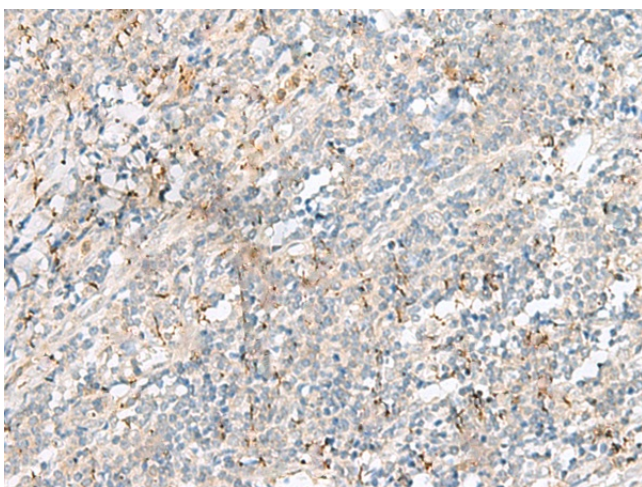
[View online »](#)

**Product images:**

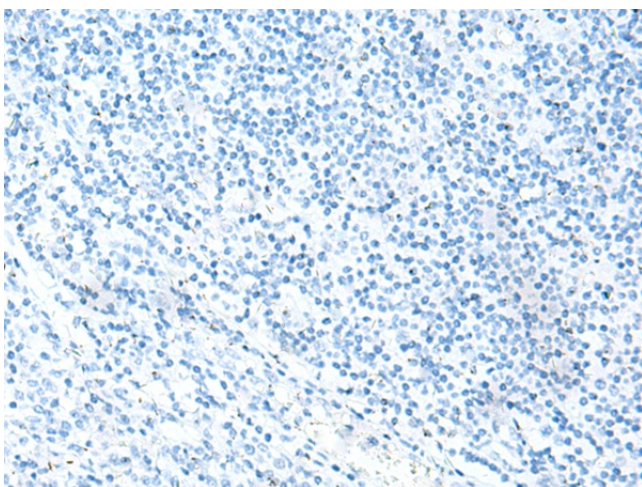
Immunohistochemistry of paraffin-embedded Human esophagus cancer tissue using [TA370439] (PLCL2 Antibody) at dilution 1/50 (Original magnification:  $\times 200$ )



Immunohistochemistry of paraffin-embedded Human esophagus cancer tissue using [TA370439] (PLCL2 Antibody) at dilution 1/50, treated with fusion protein. (Original magnification:  $\times 200$ )



Immunohistochemistry of paraffin-embedded Human tonsil tissue using [TA370439] (PLCL2 Antibody) at dilution 1/50 (Original magnification: ×200)



Immunohistochemistry of paraffin-embedded Human tonsil tissue using [TA370439] (PLCL2 Antibody) at dilution 1/50, treated with fusion protein. (Original magnification: ×200)