

Product datasheet for **TA370435**

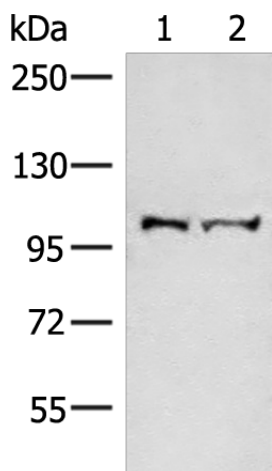
EFTUD2 Rabbit Polyclonal Antibody

Product data:

Product Type:	Primary Antibodies
Applications:	IHC, WB
Recommended Dilution:	WB: 500-2000 WB positive control: Mouse brain tissue and Jurkat cell lysates IHC: 50-300 Positive control: Human lung cancer Predicted cell location: Nucleus
Reactivity:	Human, Mouse
Host:	Rabbit
Isotype:	IgG
Clonality:	Polyclonal
Immunogen:	Fusion protein of human EFTUD2
Formulation:	pH7.4 PBS, 0.05% NaN ₃ , 40% Glycerol
Concentration:	lot specific
Purification:	Antigen affinity purification
Conjugation:	Unconjugated
Storage:	Store at -20°C.
Stability:	1 year
Predicted Protein Size:	109 kDa
Gene Name:	elongation factor Tu GTP binding domain containing 2
Database Link:	Entrez Gene 9343 Human Q15029
Background:	This gene encodes a GTPase which is a component of the spliceosome complex which processes precursor mRNAs to produce mature mRNAs. Mutations in this gene are associated with mandibulofacial dysostosis with microcephaly. Multiple transcript variants encoding different isoforms have been found for this gene.
Synonyms:	DKFZp686E24196; FLJ44695; hSNU114; KIAA0031; Snrp116; Snu114; U5-116KD



[View online »](#)

Product images:

Gel: 6%SDS-PAGE

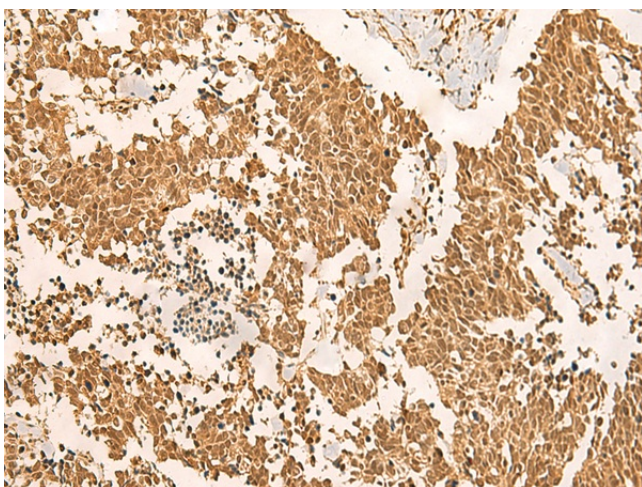
Lysate: 40 μ g

Lane 1-2: Mouse brain tissue and Jurkat cell lysates

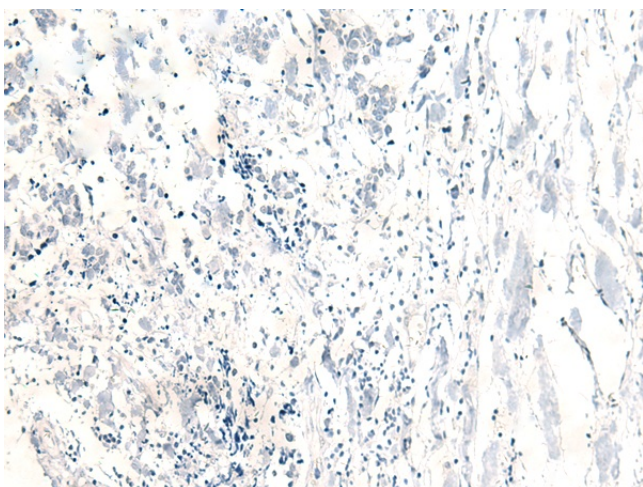
Primary antibody: TA370435 (EFTUD2 Antibody) at dilution 1/550

Secondary antibody: Goat anti rabbit IgG at 1/8000 dilution

Exposure time: 30 seconds



Immunohistochemistry of paraffin-embedded Human lung cancer tissue using TA370435 (EFTUD2 Antibody) at dilution 1/45 (Original magnification: $\times 200$)



Immunohistochemistry of paraffin-embedded Human lung cancer tissue using TA370435 (EFTUD2 Antibody) at dilution 1/45, treated with fusion protein. (Original magnification: $\times 200$)