

## Product datasheet for **TA370419S**

### TTC16 Rabbit Polyclonal Antibody

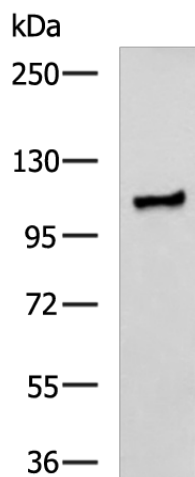
#### Product data:

Product Type:	Primary Antibodies
Applications:	WB
Recommended Dilution:	WB: 1000-5000 WB positive control: 231 cell lysate
Reactivity:	Human
Host:	Rabbit
Isotype:	IgG
Clonality:	Polyclonal
Immunogen:	Fusion protein of human TTC16
Formulation:	pH7.4 PBS, 0.05% NaN <sub>3</sub> , 40% Glycerol
Purification:	Antigen affinity purification
Conjugation:	Unconjugated
Storage:	Store at -20°C.
Stability:	1 year
Predicted Protein Size:	98 kDa
Gene Name:	tetratricopeptide repeat domain 16
Database Link:	<a href="#">Entrez Gene 158248 Human Q8NEE8</a>
Background:	The function of this protein remains unknown.
Synonyms:	FLJ32780



[View online »](#)

## Product images:



Gel: 6%SDS-PAGE  
Lysate: 40  $\mu$ g  
Lane: 231 cell lysate  
Primary antibody: [TA370419] (TTC16 Antibody)  
at dilution 1/1150  
Secondary antibody: Goat anti rabbit IgG at  
1/5000 dilution  
Exposure time: 1 minute