

## Product datasheet for **TA370418**

### ATP6V0A1 Rabbit Polyclonal Antibody

#### Product data:

Product Type:	Primary Antibodies
Applications:	IHC
Recommended Dilution:	IHC: 150-300 Positive control: Human liver cancer Predicted cell location: Cytoplasm
Reactivity:	Human, Rat
Host:	Rabbit
Isotype:	IgG
Clonality:	Polyclonal
Immunogen:	Fusion protein of human ATP6V0A1
Formulation:	pH7.4 PBS, 0.05% NaN <sub>3</sub> , 40% Glycerol
Concentration:	lot specific
Purification:	Antigen affinity purification
Conjugation:	Unconjugated
Storage:	Store at -20°C.
Stability:	1 year
Gene Name:	ATPase H <sup>+</sup> transporting V0 subunit a1
Database Link:	<a href="#">Entrez Gene 535 Human Q93050</a>



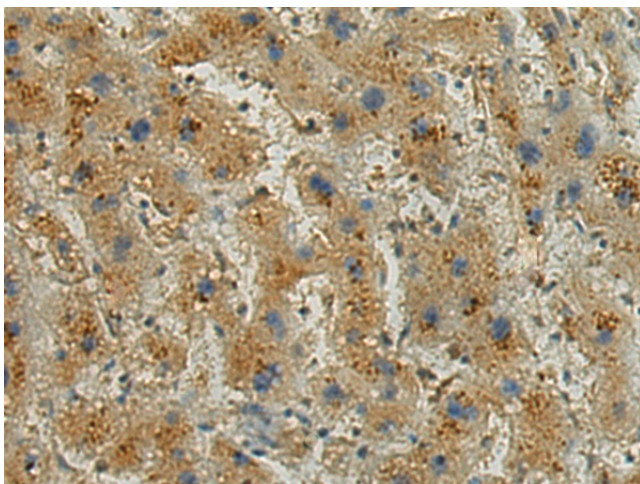
[View online »](#)

**Background:**

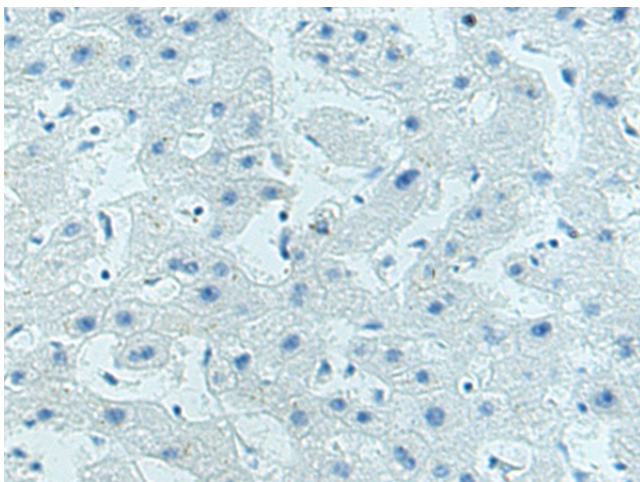
This gene encodes a component of vacuolar ATPase (V-ATPase), a multisubunit enzyme that mediates acidification of eukaryotic intracellular organelles. V-ATPase dependent organelle acidification is necessary for such intracellular processes as protein sorting, zymogen activation, receptor-mediated endocytosis, and synaptic vesicle proton gradient generation. V-ATPase is composed of a cytosolic V1 domain and a transmembrane V0 domain. The V1 domain consists of three A and three B subunits, two G subunits plus the C, D, E, F, and H subunits. The V1 domain contains the ATP catalytic site. The V0 domain consists of five different subunits: a, c, c', c'' and d. additional isoforms of many of the V1 and V0 subunit proteins are encoded by multiple genes or alternatively spliced transcript variants. This gene encodes one of three A subunit proteins and the encoded protein is associated with clathrin-coated vesicles. Three transcript variants encoding different isoforms have been found for this gene.

**Synonyms:**

a1; ATP6N1; ATP6N1A; DKFZp781J1951; Stv1; Vph1; VPP1

**Product images:**

Immunohistochemistry of paraffin-embedded Human liver cancer tissue using TA370418 (ATP6V0A1 Antibody) at dilution 1/150 (Original magnification: x200)



Immunohistochemistry of paraffin-embedded Human liver cancer tissue using TA370418 (ATP6V0A1 Antibody) at dilution 1/150, treated with fusion protein. (Original magnification: x200)