

Product datasheet for **TA370412**

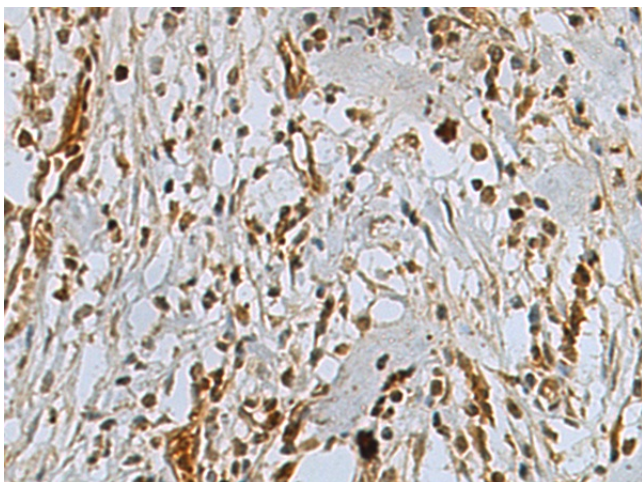
PTIP (PAXIP1) Rabbit Polyclonal Antibody

Product data:

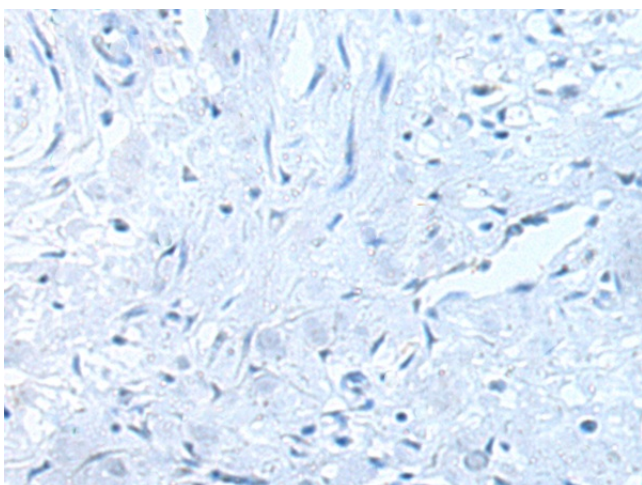
Product Type:	Primary Antibodies
Applications:	IHC
Recommended Dilution:	IHC: 50-200 Positive control: Human gastric cancer Predicted cell location: Nucleus
Reactivity:	Human, Mouse
Host:	Rabbit
Isotype:	IgG
Clonality:	Polyclonal
Immunogen:	Fusion protein of human PAXIP1
Formulation:	pH7.4 PBS, 0.05% NaN ₃ , 40% Glycerol
Concentration:	lot specific
Purification:	Antigen affinity purification
Conjugation:	Unconjugated
Storage:	Store at -20°C.
Stability:	1 year
Gene Name:	PAX interacting protein 1
Database Link:	Entrez Gene 22976 Human Q6ZW49
Background:	This gene is a member of the paired box (PAX) gene family and encodes a nuclear protein with six BRCT (breast cancer carboxy-terminal) domains. This protein plays a critical role in maintaining genome stability, condensation of chromatin and progression through mitosis.
Synonyms:	CAGF28; CAGF29; FLJ41049; OTTHUMP00000199835; PACIP1; PAXIP1L; PTIP; TNRC2

[View online »](#)

Product images:



Immunohistochemistry of paraffin-embedded Human gastric cancer tissue using TA370412 (PAXIP1 Antibody) at dilution 1/80 (Original magnification: ×200)



Immunohistochemistry of paraffin-embedded Human gastric cancer tissue using TA370412 (PAXIP1 Antibody) at dilution 1/80, treated with fusion protein. (Original magnification: ×200)