

## Product datasheet for **TA370410S**

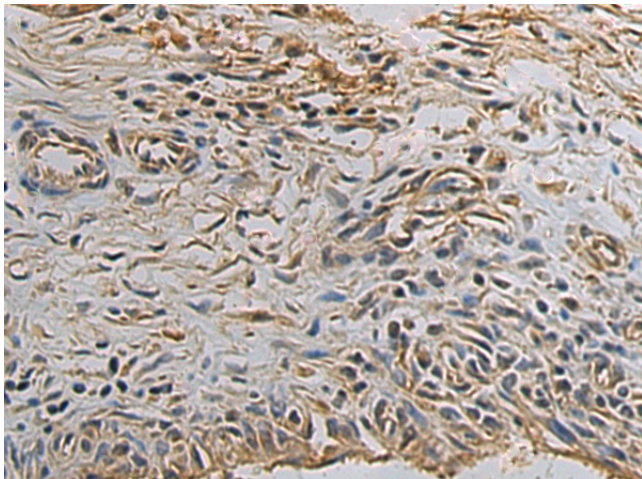
### EXT1 Rabbit Polyclonal Antibody

#### Product data:

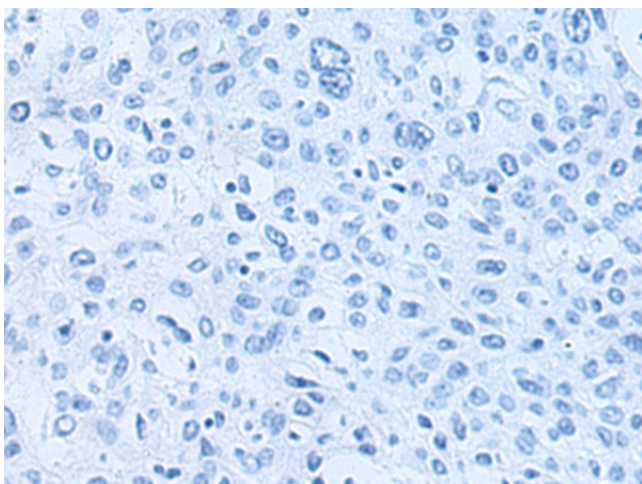
Product Type:	Primary Antibodies
Applications:	IHC
Recommended Dilution:	IHC: 50-200 Positive control: Human cervical cancer Predicted cell location: Cytoplasm and Cell membrane
Reactivity:	Human, Mouse
Host:	Rabbit
Isotype:	IgG
Clonality:	Polyclonal
Immunogen:	Fusion protein of human EXT1
Formulation:	pH7.4 PBS, 0.05% NaN <sub>3</sub> , 40% Glycerol
Purification:	Antigen affinity purification
Conjugation:	Unconjugated
Storage:	Store at -20°C.
Stability:	1 year
Gene Name:	exostosin glycosyltransferase 1
Database Link:	<a href="#">Entrez Gene 2131 Human Q16394</a>
Background:	This gene encodes an endoplasmic reticulum-resident type II transmembrane glycosyltransferase involved in the chain elongation step of heparan sulfate biosynthesis. Mutations in this gene cause the type I form of multiple exostoses.
Synonyms:	EXT; Glucuronosyl-N-acetylglucosaminyl-proteoglycan/N-a; LGCR; LGS; TRPS2; ttv



[View online »](#)

**Product images:**

Immunohistochemistry of paraffin-embedded Human cervical cancer tissue using [TA370410] (EXT1 Antibody) at dilution 1/100 (Original magnification: x200)



Immunohistochemistry of paraffin-embedded Human cervical cancer tissue using [TA370410] (EXT1 Antibody) at dilution 1/100, treated with fusion protein. (Original magnification: x200)