

## Product datasheet for **TA370408S**

### MCCC1 Rabbit Polyclonal Antibody

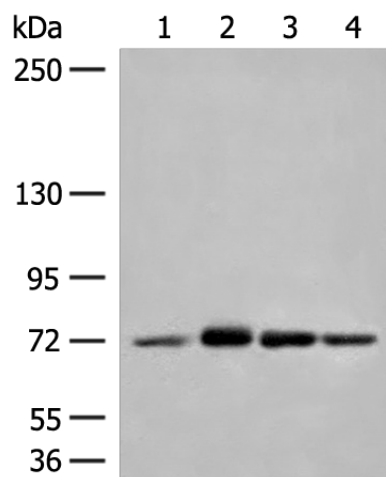
#### Product data:

Product Type:	Primary Antibodies
Applications:	WB
Recommended Dilution:	WB: 500-2000 WB positive control: Jurkat cell, Mouse heart tissue, A172, HepG2 cell lysates
Reactivity:	Human, Mouse
Host:	Rabbit
Isotype:	IgG
Clonality:	Polyclonal
Immunogen:	Fusion protein of human MCCC1
Formulation:	pH7.4 PBS, 0.05% NaN <sub>3</sub> , 40% Glycerol
Purification:	Antigen affinity purification
Conjugation:	Unconjugated
Storage:	Store at -20°C.
Stability:	1 year
Predicted Protein Size:	80 kDa
Gene Name:	methylcrotonoyl-CoA carboxylase 1
Database Link:	<a href="#">Entrez Gene 56922 Human Q96RQ3</a>
Background:	This gene encodes the large subunit of 3-methylcrotonyl-CoA carboxylase. This enzyme functions as a heterodimer and catalyzes the carboxylation of 3-methylcrotonyl-CoA to form 3-methylglutaconyl-CoA. Mutations in this gene are associated with 3-Methylcrotonylglycinuria, an autosomal recessive disorder of leucine catabolism.
Synonyms:	DKFZp686B20267; FLJ25545; MCC-B; MCCA



[View online »](#)

## Product images:



Gel: 6%SDS-PAGE  
Lysate: 40  $\mu$ g  
Lane 1-4: Jurkat cell  
Mouse heart tissue  
A172  
HepG2 cell lysates  
Primary antibody: [TA370408] (MCCC1 Antibody)  
at dilution 1/350  
Secondary antibody: Goat anti rabbit IgG at  
1/8000 dilution  
Exposure time: 10 seconds