

Product datasheet for **TA370399**

PHTF1 Rabbit Polyclonal Antibody

Product data:

Product Type:	Primary Antibodies
Applications:	IHC
Recommended Dilution:	IHC: 20-100 Positive control: Human thyroid cancer Predicted cell location: Nucleus
Reactivity:	Human, Mouse
Host:	Rabbit
Isotype:	IgG
Clonality:	Polyclonal
Immunogen:	Fusion protein of human PHTF1
Formulation:	pH7.4 PBS, 0.05% NaN ₃ , 40% Glycerol
Concentration:	lot specific
Purification:	Antigen affinity purification
Conjugation:	Unconjugated
Storage:	Store at -20°C.
Stability:	1 year
Gene Name:	putative homeodomain transcription factor 1
Database Link:	Entrez Gene 10745 Human Q9UMS5



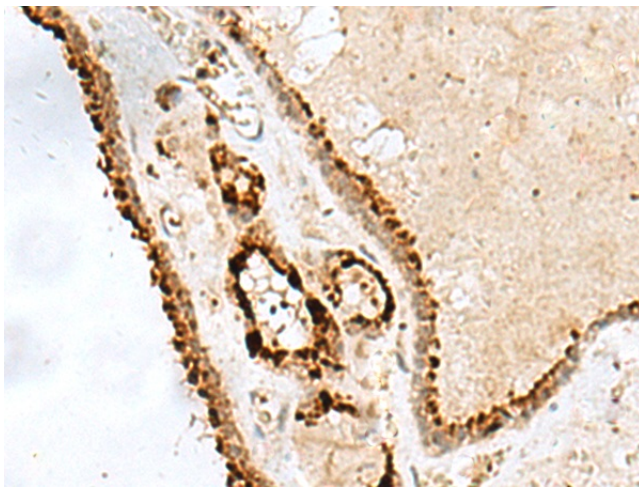
[View online »](#)

Background:

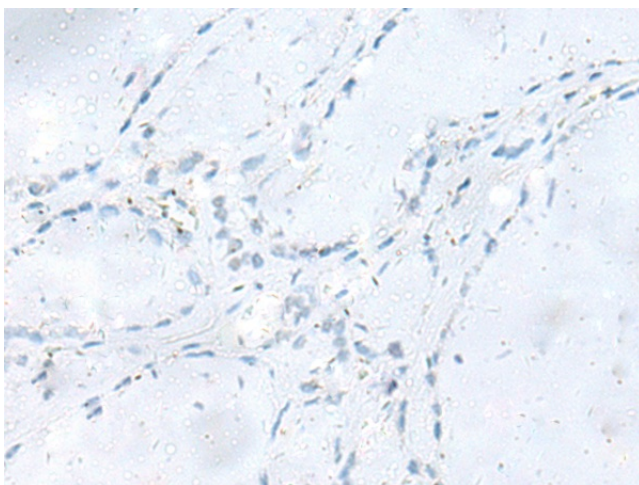
PHTF1 (putative homeodomain transcription factor 1), also known as PHTF, is a potential transcription regulator. It is a ubiquitously expressed integral, multipass membrane protein with predominant expression in testis. PHTF1 is associated with the ER (endoplasmic reticulum) and contains one bHLH (basic helix-loop-helix) domain. It is present in the cell during meiosis and spermiogenesis but, by the end of spermiogenesis, is released from the mature cell within the residual bodies. This implies that PHTF1 may play a role in the spermatozoa maturation process. In addition, PHTF1 is believed to interact with FEM1B and may be responsible for recruiting FEM1B to the surface of the ER membrane. This suggests that PHTF1 acts as a sequestering or anchoring protein for FEM1B. Two PHTF1 isoforms exist due to alternate splicing events. Isoform 2 is the shorter form and lacks the amino acid residues 648 to 762.

Synonyms:

OTTHUMP00000013561; PHTF

Product images:


Immunohistochemistry of paraffin-embedded Human thyroid cancer tissue using TA370399 (PHTF1 Antibody) at dilution 1/40 (Original magnification: ×200)



Immunohistochemistry of paraffin-embedded Human thyroid cancer tissue using TA370399 (PHTF1 Antibody) at dilution 1/40, treated with fusion protein. (Original magnification: ×200)