

Product datasheet for **TA370390S**

Acyltransferase like 1 (LPCAT2) Rabbit Polyclonal Antibody

Product data:

| | |
|-------------------------|--|
| Product Type: | Primary Antibodies |
| Applications: | IHC, WB |
| Recommended Dilution: | WB: 200-1000 WB positive control: Mouse liver tissue, Hela cell lysates IHC: 100-300 Positive control: Human esophagus cancer Predicted cell location: Cytoplasm |
| Reactivity: | Human, Mouse, Rat |
| Host: | Rabbit |
| Isotype: | IgG |
| Clonality: | Polyclonal |
| Immunogen: | Fusion protein of human LPCAT2 |
| Formulation: | pH7.4 PBS, 0.05% NaN ₃ , 40% Glycerol |
| Purification: | Antigen affinity purification |
| Conjugation: | Unconjugated |
| Storage: | Store at -20°C. |
| Stability: | 1 year |
| Predicted Protein Size: | 60 kDa |
| Gene Name: | lysophosphatidylcholine acyltransferase 2 |
| Database Link: | Entrez Gene 54947 Human Q7L5N7 |

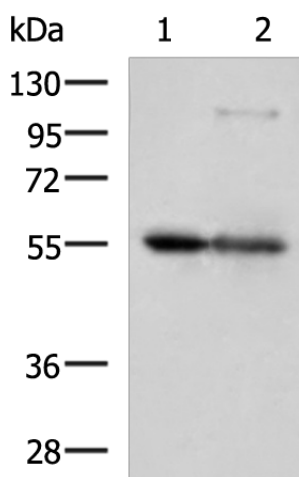
Background: This gene encodes a member of the lysophospholipid acyltransferase family. The encoded enzyme may function in two ways: to catalyze the biosynthesis of platelet-activating factor (1-O-alkyl-2-acetyl-sn-glycero-3-phosphocholine) from 1-O-alkyl-sn-glycero-3-phosphocholine, and to catalyze the synthesis of glycerophospholipid precursors from arachidonyl-CoA and lysophosphatidylcholine. The encoded protein may function in membrane biogenesis and production of platelet-activating factor in inflammatory cells. The enzyme may localize to the endoplasmic reticulum and the Golgi.



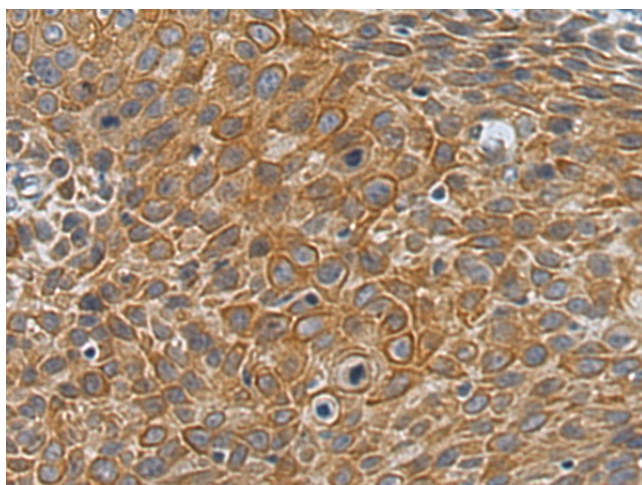
[View online »](#)

Synonyms: AYTL1; DKFZp686H22112; FLJ20481; LPCAT-2; LysoPAFAT

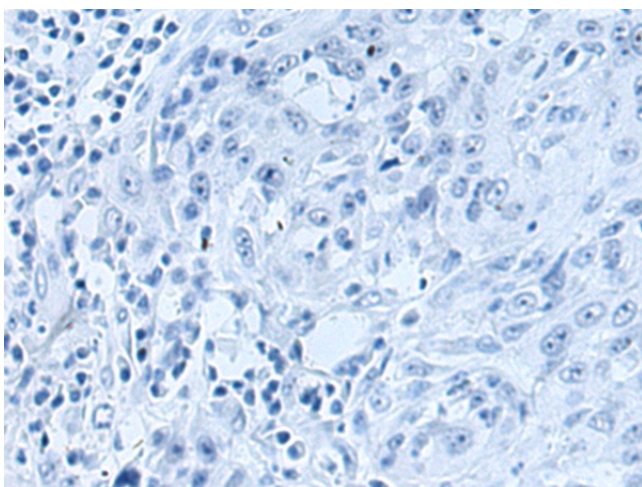
Product images:



Gel: 8%SDS-PAGE
 Lysate: 40 µg
 Lane 1-2: Mouse liver tissue
 Hela cell lysates
 Primary antibody: [TA370390] (LPCAT2 Antibody) at dilution 1/400
 Secondary antibody: Goat anti rabbit IgG at 1/5000 dilution
 Exposure time: 20 seconds



Immunohistochemistry of paraffin-embedded Human esophagus cancer tissue using [TA370390] (LPCAT2 Antibody) at dilution 1/120 (Original magnification: ×200)



Immunohistochemistry of paraffin-embedded Human esophagus cancer tissue using [TA370390] (LPCAT2 Antibody) at dilution 1/120, treated with fusion protein. (Original magnification: $\times 200$)