

Product datasheet for **TA370385S**

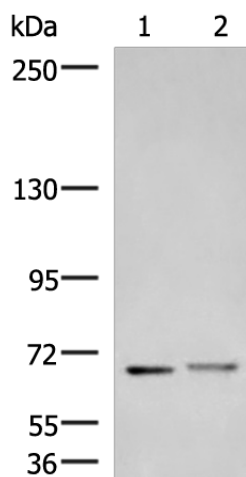
EXD2 Rabbit Polyclonal Antibody

Product data:

Product Type:	Primary Antibodies
Applications:	IHC, WB
Recommended Dilution:	WB: 500-2000 WB positive control: Mouse brain tissue and Human cerebrum tissue lysates IHC: 40-200 Positive control: Human tonsil Predicted cell location: Cytoplasm or Nucleus
Reactivity:	Human, Mouse
Host:	Rabbit
Isotype:	IgG
Clonality:	Polyclonal
Immunogen:	Fusion protein of human EXD2
Formulation:	pH7.4 PBS, 0.05% NaN ₃ , 40% Glycerol
Purification:	Antigen affinity purification
Conjugation:	Unconjugated
Storage:	Store at -20°C.
Stability:	1 year
Predicted Protein Size:	70 kDa
Gene Name:	exonuclease 3'-5' domain containing 2
Database Link:	Entrez Gene 55218 Human Q9NVH0
Background:	Exonuclease required for double-strand breaks resection and efficient homologous recombination. Plays a key role in controlling the initial steps of chromosomal break repair, it is recruited to chromatin in a damage-dependent manner and functionally interacts with the MRN complex to accelerate resection through its 3'-5' exonuclease activity, which efficiently processes double-stranded DNA substrates containing nicks.
Synonyms:	C14orf114; DKFZp781A0133; DKFZp781L15100; EXDL2; FLJ10738; OTTHUMP00000205813; OTTHUMP00000205816; OTTHUMP00000205817; OTTHUMP00000205818



[View online »](#)

Product images:


Gel: 6%SDS-PAGE

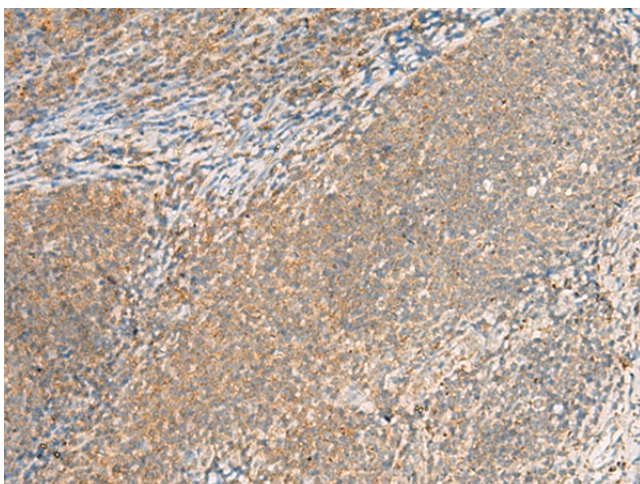
Lysate: 40 µg

Lane 1-2: Mouse brain tissue and Human cerebrum tissue lysates

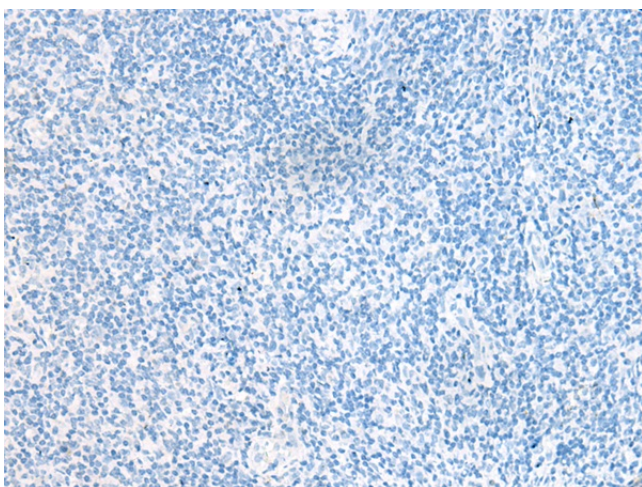
Primary antibody: [TA370385] (EXD2 Antibody) at dilution 1/700

Secondary antibody: Goat anti rabbit IgG at 1/5000 dilution

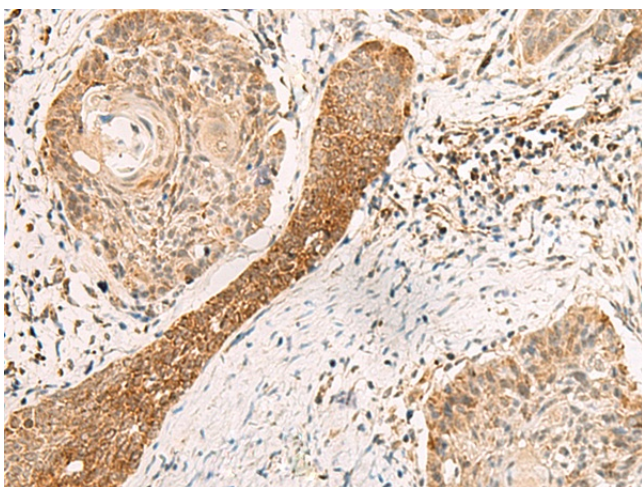
Exposure time: 3 minutes



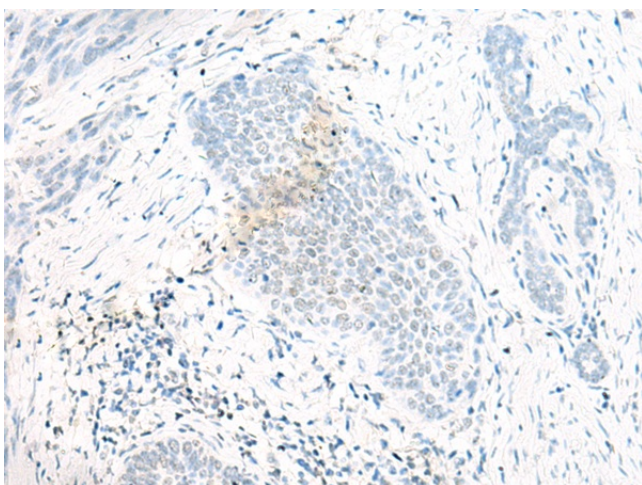
Immunohistochemistry of paraffin-embedded Human tonsil tissue using [TA370385] (EXD2 Antibody) at dilution 1/55 (Original magnification: ×200)



Immunohistochemistry of paraffin-embedded Human tonsil tissue using [TA370385] (EXD2 Antibody) at dilution 1/55, treated with fusion protein. (Original magnification: ×200)



Immunohistochemistry of paraffin-embedded Human esophagus cancer tissue using [TA370385] (EXD2 Antibody) at dilution 1/55 (Original magnification: ×200)



Immunohistochemistry of paraffin-embedded Human esophagus cancer tissue using [TA370385] (EXD2 Antibody) at dilution 1/55, treated with fusion protein. (Original magnification: ×200)