

Product datasheet for **TA370370S**

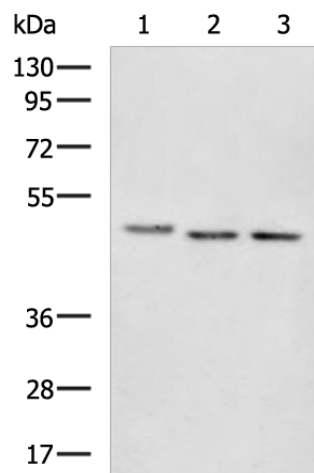
EIF4A2 Rabbit Polyclonal Antibody

Product data:

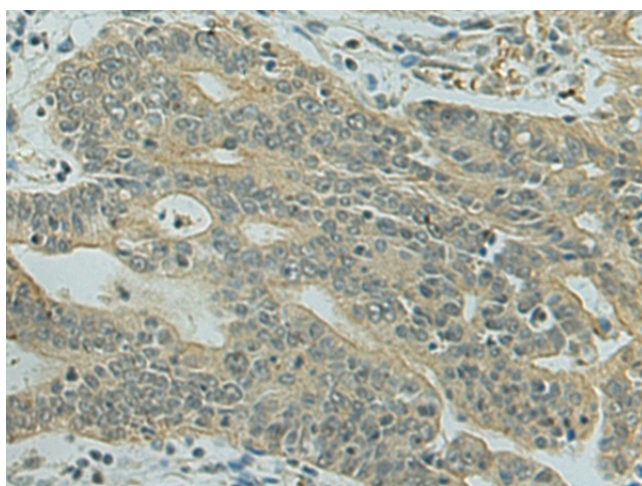
Product Type:	Primary Antibodies
Applications:	IHC, WB
Recommended Dilution:	WB: 500-2000 WB positive control: Mouse brain tissue, K562 and Raji cell lysates IHC: 50-200 Positive control: Human gastric cancer Predicted cell location: Cytoplasm
Reactivity:	Human, Mouse, Rat
Host:	Rabbit
Isotype:	IgG
Clonality:	Polyclonal
Immunogen:	Fusion protein of human EIF4A2
Formulation:	pH7.4 PBS, 0.05% NaN ₃ , 40% Glycerol
Purification:	Antigen affinity purification
Conjugation:	Unconjugated
Storage:	Store at -20°C.
Stability:	1 year
Predicted Protein Size:	46 kDa
Gene Name:	eukaryotic translation initiation factor 4A2
Database Link:	Entrez Gene 1974 Human Q14240
Background:	ATP-dependent RNA helicase which is a subunit of the eIF4F complex involved in cap recognition and is required for mRNA binding to ribosome. In the current model of translation initiation, eIF4A unwinds RNA secondary structures in the 5'-UTR of mRNAs which is necessary to allow efficient binding of the small ribosomal subunit, and subsequent scanning for the initiator codon.
Synonyms:	BM-010; DDX2B; eIF-4A-II; EIF4A; eIF4A-II; EIF4F



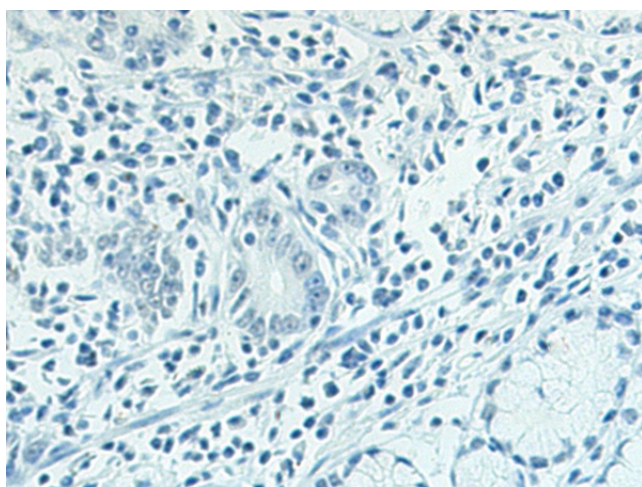
[View online »](#)

Product images:


Gel: 8%SDS-PAGE
 Lysate: 40 μ g
 Lane 1-3: Mouse brain tissue
 K562 and Raji cell lysates
 Primary antibody: [TA370370] (EIF4A2 Antibody)
 at dilution 1/1000
 Secondary antibody: Goat anti rabbit IgG at
 1/5000 dilution
 Exposure time: 1 minute



Immunohistochemistry of paraffin-embedded
 Human gastric cancer tissue using [TA370370]
 (EIF4A2 Antibody) at dilution 1/80 (Original
 magnification: \times 200)



Immunohistochemistry of paraffin-embedded
 Human gastric cancer tissue using [TA370370]
 (EIF4A2 Antibody) at dilution 1/80, treated with
 fusion protein. (Original magnification: \times 200)