

Product datasheet for **TA370365S**

KRR1 Rabbit Polyclonal Antibody

Product data:

Product Type:	Primary Antibodies
Applications:	IHC, WB
Recommended Dilution:	WB: 200-1000 WB positive control: Human heart tissue lysate IHC: 50-300 Positive control: Human esophagus cancer Predicted cell location: Nucleus
Reactivity:	Human, Mouse
Host:	Rabbit
Isotype:	IgG
Clonality:	Polyclonal
Immunogen:	Fusion protein of human KRR1
Formulation:	pH7.4 PBS, 0.05% NaN ₃ , 40% Glycerol
Purification:	Antigen affinity purification
Conjugation:	Unconjugated
Storage:	Store at -20°C.
Stability:	1 year
Predicted Protein Size:	44 kDa
Gene Name:	KRR1, small subunit processome component homolog
Database Link:	Entrez Gene 11103 Human Q13601



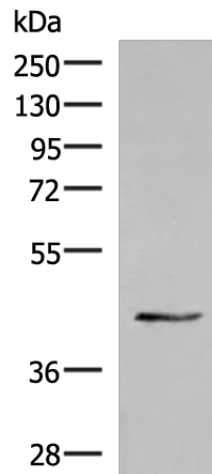
[View online »](#)

Background:

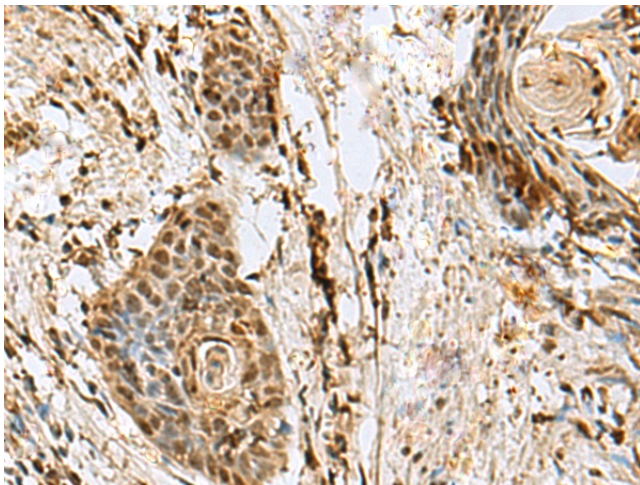
The SSU is a large ribonucleoprotein consisting of at least 40 proteins and the U3 small nucleolar RNA. It is involved in pre-rRNA processing and ribosome assembly. The SSU is necessary for the biogenesis of the 18S rRNA. Cells that are depleted of SSU proteins will arrest in the G1 phase of the cell cycle. KRR1, also known as HRB2 (HIV-1 Rev binding protein 2) or RIP-1 (Rev interacting protein 1), is a nonribosomal component of the small subunit processome (SSU). KRR1 is 381 amino acids in length and is evolutionarily conserved among human, yeast, fly, nematode and rice. KRR1 localizes to the nucleolus and is highly expressed in dividing cells. It contains one conserved KH domain (RNA-binding motif) and is a crucial component of the SSU, required for both rRNA maturation and ribosome biogenesis.

Synonyms:

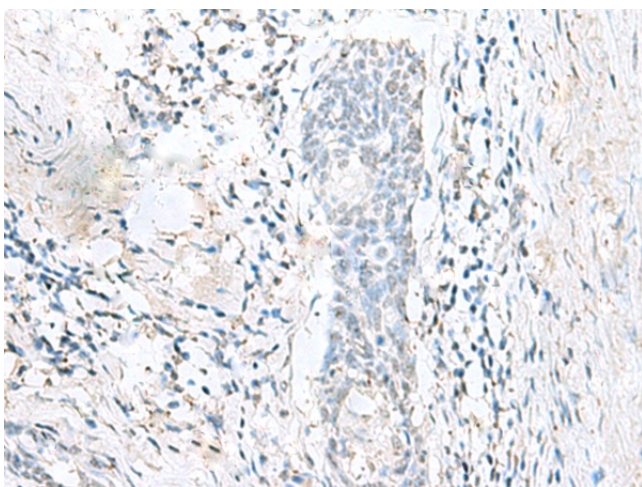
HRB2; RIP-1

Product images:


Gel: 8%SDS-PAGE
 Lysate: 40 µg
 Lane: Human heart tissue lysate
 Primary antibody: [TA370365] (KRR1 Antibody) at dilution 1/250
 Secondary antibody: Goat anti rabbit IgG at 1/5000 dilution
 Exposure time: 7 seconds



Immunohistochemistry of paraffin-embedded Human esophagus cancer tissue using [TA370365] (KRR1 Antibody) at dilution 1/60 (Original magnification: ×200)



Immunohistochemistry of paraffin-embedded Human esophagus cancer tissue using [TA370365] (KRR1 Antibody) at dilution 1/60, treated with fusion protein. (Original magnification: $\times 200$)