

Product datasheet for **TA370364S**

Esa1 (FLOT2) Rabbit Polyclonal Antibody

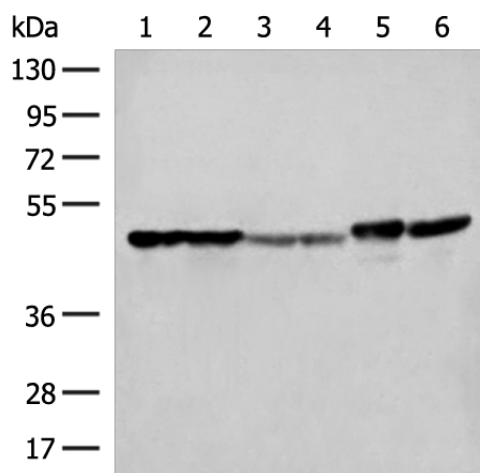
Product data:

Product Type:	Primary Antibodies
Applications:	IHC, WB
Recommended Dilution:	WB: 500-2000 WB positive control: Hela, A375, Human fetal liver tissue, Human fetal brain tissue, HepG2 cell and Mouse brain tissue lysates IHC: 50-300 Positive control: Human tonsil Predicted cell location: Cytoplasm and Cell membrane
Reactivity:	Human, Mouse, Rat
Host:	Rabbit
Isotype:	IgG
Clonality:	Polyclonal
Immunogen:	Fusion protein of human FLOT2
Formulation:	pH7.4 PBS, 0.05% NaN ₃ , 40% Glycerol
Purification:	Antigen affinity purification
Conjugation:	Unconjugated
Storage:	Store at -20°C.
Stability:	1 year
Predicted Protein Size:	47 kDa
Gene Name:	flotillin 2
Database Link:	Entrez Gene 2319 Human Q14254
Background:	Caveolae are small domains on the inner cell membrane involved in vesicular trafficking and signal transduction. This gene encodes a caveolae-associated, integral membrane protein, which is thought to function in neuronal signaling. May act as a scaffolding protein within caveolar membranes, functionally participating in formation of caveolae or caveolae-like vesicles. May be involved in epidermal cell adhesion and epidermal structure and function.
Synonyms:	ECS-1; ECS1; ESA; ESA1; M17S1



[View online »](#)

Product images:



Gel: 8%SDS-PAGE

Lysate: 40 μ g

Lane 1-6: HeLa

A375

Human fetal liver tissue

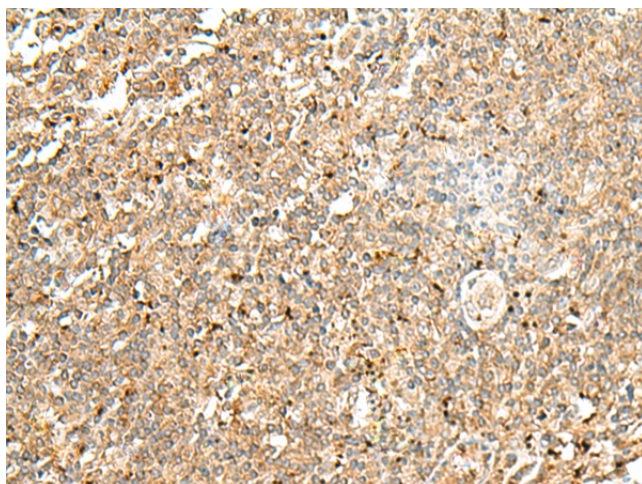
Human fetal brain tissue

HepG2 cell and Mouse brain tissue lysates

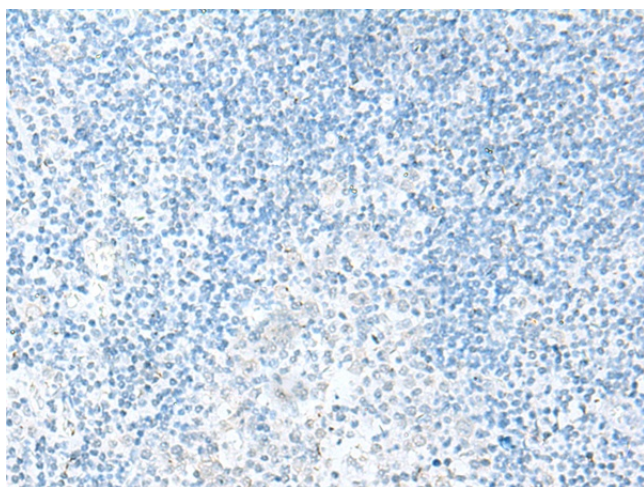
Primary antibody: [TA370364] (FLOT2 Antibody)
at dilution 1/350

Secondary antibody: Goat anti rabbit IgG at
1/8000 dilution

Exposure time: 3 seconds



Immunohistochemistry of paraffin-embedded
Human tonsil tissue using [TA370364] (FLOT2
Antibody) at dilution 1/50 (Original magnification:
 \times 200)



Immunohistochemistry of paraffin-embedded Human tonsil tissue using [TA370364] (FLOT2 Antibody) at dilution 1/50, treated with fusion protein. (Original magnification: ×200)