

## Product datasheet for **TA370364**

### Esa1 (FLOT2) Rabbit Polyclonal Antibody

#### Product data:

Product Type:	Primary Antibodies
Applications:	IHC, WB
Recommended Dilution:	WB: 500-2000 WB positive control: HeLa, A375, Human fetal liver tissue, Human fetal brain tissue, HepG2 cell and Mouse brain tissue lysates IHC: 50-300 Positive control: Human tonsil Predicted cell location: Cytoplasm and Cell membrane
Reactivity:	Human, Mouse, Rat
Host:	Rabbit
Isotype:	IgG
Clonality:	Polyclonal
Immunogen:	Fusion protein of human FLOT2
Formulation:	pH7.4 PBS, 0.05% NaN <sub>3</sub> , 40% Glycerol
Concentration:	lot specific
Purification:	Antigen affinity purification
Conjugation:	Unconjugated
Storage:	Store at -20°C.
Stability:	1 year
Predicted Protein Size:	47 kDa
Gene Name:	flotillin 2
Database Link:	<a href="#">Entrez Gene 2319 Human Q14254</a>

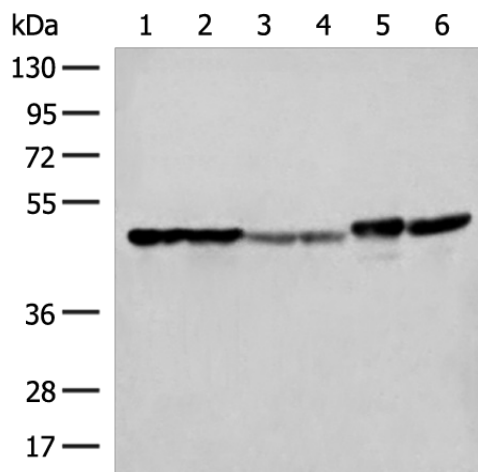
**Background:** Caveolae are small domains on the inner cell membrane involved in vesicular trafficking and signal transduction. This gene encodes a caveolae-associated, integral membrane protein, which is thought to function in neuronal signaling. May act as a scaffolding protein within caveolar membranes, functionally participating in formation of caveolae or caveolae-like vesicles. May be involved in epidermal cell adhesion and epidermal structure and function.



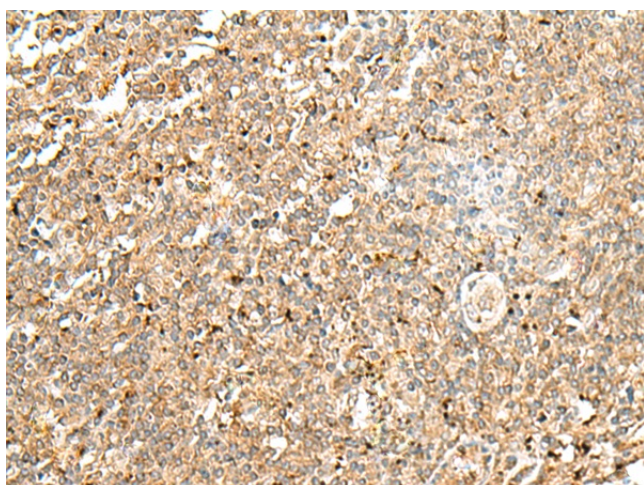
[View online »](#)

Synonyms: ECS-1; ECS1; ESA; ESA1; M17S1

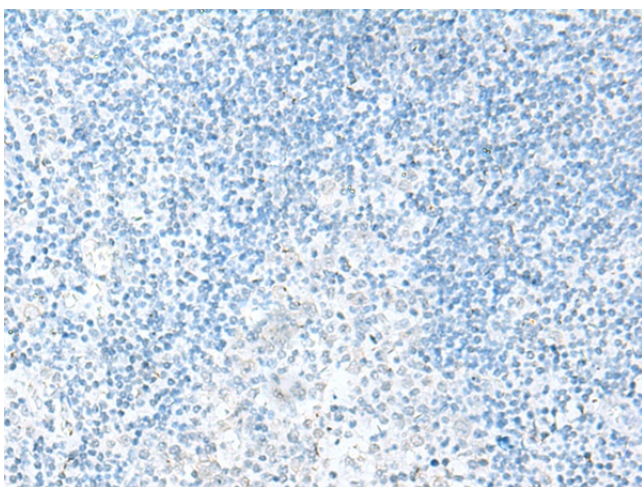
### Product images:



Gel: 8%SDS-PAGE  
Lysate: 40  $\mu$ g  
Lane 1-6: HeLa  
A375  
Human fetal liver tissue  
Human fetal brain tissue  
HepG2 cell and Mouse brain tissue lysates  
Primary antibody: TA370364 (FLOT2 Antibody) at dilution 1/350  
Secondary antibody: Goat anti rabbit IgG at 1/8000 dilution  
Exposure time: 3 seconds



Immunohistochemistry of paraffin-embedded Human tonsil tissue using TA370364 (FLOT2 Antibody) at dilution 1/50 (Original magnification:  $\times$ 200)



Immunohistochemistry of paraffin-embedded Human tonsil tissue using TA370364 (FLOT2 Antibody) at dilution 1/50, treated with fusion protein. (Original magnification:  $\times 200$ )