

## Product datasheet for **TA370355S**

### TXNL1 Rabbit Polyclonal Antibody

#### Product data:

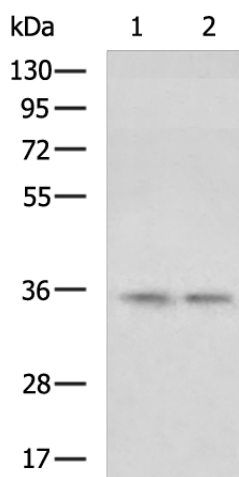
Product Type:	Primary Antibodies
Applications:	IHC, WB
Recommended Dilution:	WB: 1000-5000 WB positive control: PC3 cell, HepG2 cell lysates IHC: 50-200 Positive control: Human esophagus cancer Predicted cell location: Cytoplasm
Reactivity:	Human, Mouse, Rat
Host:	Rabbit
Isotype:	IgG
Clonality:	Polyclonal
Immunogen:	Fusion protein of human TXNL1
Formulation:	pH7.4 PBS, 0.05% NaN <sub>3</sub> , 40% Glycerol
Purification:	Antigen affinity purification
Conjugation:	Unconjugated
Storage:	Store at -20°C.
Stability:	1 year
Predicted Protein Size:	32 kDa
Gene Name:	thioredoxin like 1
Database Link:	<a href="#">Entrez Gene 9352 Human O43396</a>

**Background:** TXNL1(Thioredoxin-like protein 1) is also named as TRP32, TXL, TXNL and belongs to the thioredoxin family. It might be involved in the cellular response to sugar starvation stress. The predicted 289-amino acid, 32.3-kD protein has 2 distinct domains: an N-terminal domain, which is 43% identical to human TXN, and a C-terminal domain, which showed no homology to other proteins in the sequence databases. TXNL1 functions as an effector of oxidants or redox sensor that couples oxidative stress to endocytosis, by converting redox changes into a specific GDI:Rab5-mediated endocytic response.

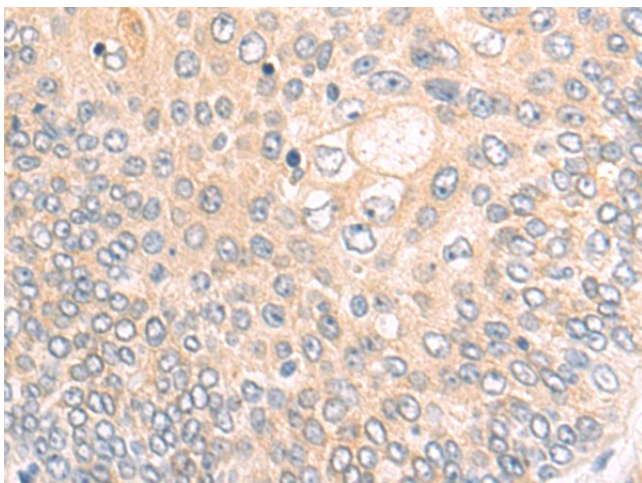

[View online »](#)

**Synonyms:** TRP32; TxI; TXL-1; TXNL

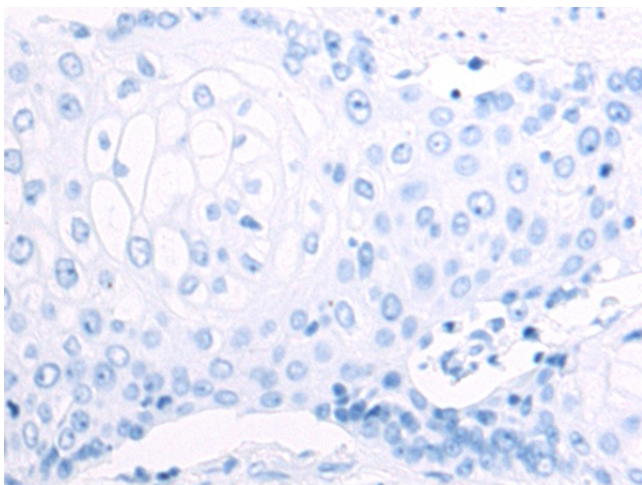
**Product images:**



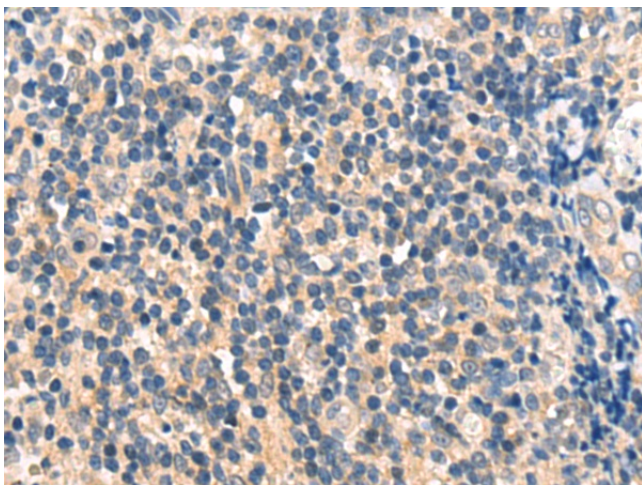
Gel: 8%SDS-PAGE  
Lysate: 40 µg  
Lane 1-2: PC3 cell  
HepG2 cell lysates  
Primary antibody: [TA370355] (TXNL1 Antibody)  
at dilution 1/1000  
Secondary antibody: Goat anti rabbit IgG at  
1/5000 dilution  
Exposure time: 10 seconds



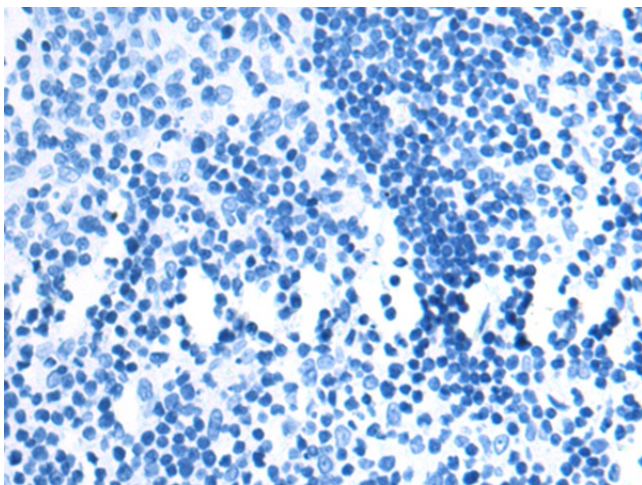
Immunohistochemistry of paraffin-embedded  
Human esophagus cancer tissue using  
[TA370355] (TXNL1 Antibody) at dilution 1/50  
(Original magnification: ×200)



Immunohistochemistry of paraffin-embedded Human esophagus cancer tissue using [TA370355] (TXNL1 Antibody) at dilution 1/50, treated with fusion protein. (Original magnification: ×200)



Immunohistochemistry of paraffin-embedded Human tonsil tissue using [TA370355] (TXNL1 Antibody) at dilution 1/50 (Original magnification: ×200)



Immunohistochemistry of paraffin-embedded Human tonsil tissue using [TA370355] (TXNL1 Antibody) at dilution 1/50, treated with fusion protein. (Original magnification: ×200)