

Product datasheet for **TA370346**

PSMA1 Rabbit Polyclonal Antibody

Product data:

Product Type:	Primary Antibodies
Applications:	IHC, WB
Recommended Dilution:	WB: 1000-5000 WB positive control: SKOV3, 293T, Raji, PC-3, HepG2, Hela and Jurkat cell lysates IHC: 150-300 Positive control: Human prostate cancer Predicted cell location: Nucleus
Reactivity:	Human, Mouse, Rat
Host:	Rabbit
Isotype:	IgG
Clonality:	Polyclonal
Immunogen:	Fusion protein of human PSMA1
Formulation:	pH7.4 PBS, 0.05% NaN ₃ , 40% Glycerol
Concentration:	lot specific
Purification:	Antigen affinity purification
Conjugation:	Unconjugated
Storage:	Store at -20°C.
Stability:	1 year
Predicted Protein Size:	30 kDa
Gene Name:	proteasome subunit alpha 1
Database Link:	Entrez Gene 5682 Human P25786



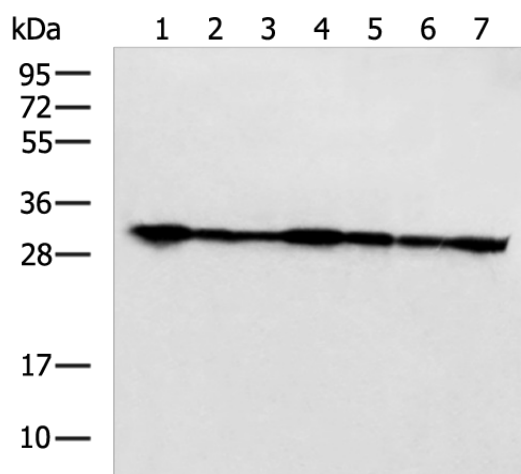
[View online »](#)

Background:

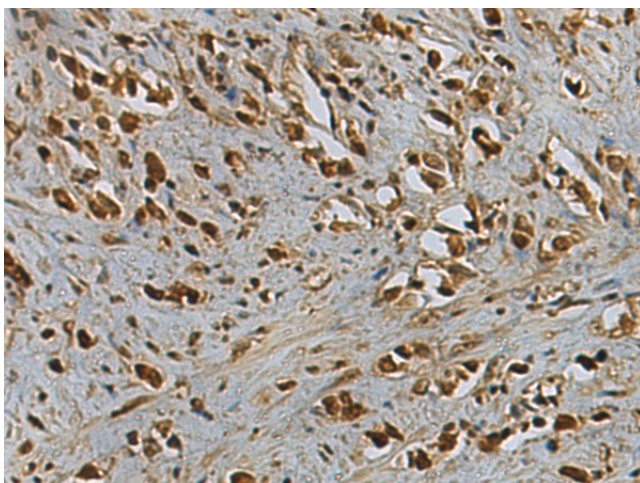
The proteasome is a multicatalytic proteinase complex with a highly ordered ring-shaped 20S core structure. The core structure is composed of 4 rings of 28 non-identical subunits; 2 rings are composed of 7 alpha subunits and 2 rings are composed of 7 beta subunits. Proteasomes are distributed throughout eukaryotic cells at a high concentration and cleave peptides in an ATP/ubiquitin-dependent process in a non-lysosomal pathway. An essential function of a modified proteasome, the immunoproteasome, is the processing of class I MHC peptides. This gene encodes a member of the peptidase T1A family, that is a 20S core alpha subunit. Alternative splicing results in multiple transcript variants encoding distinct isoforms.

Synonyms:

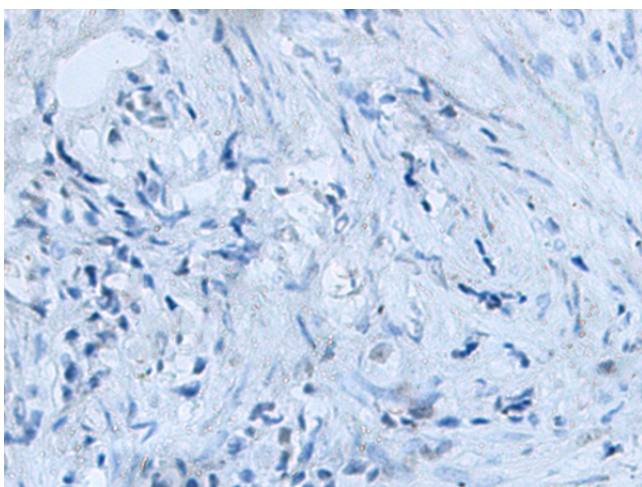
HC2; MGC1667; MGC14542; MGC14575; MGC14751; MGC21459; MGC22853; MGC23915; NU; PROS-30; PROS30; PSC2

Product images:


Gel: 12%SDS-PAGE
 Lysate: 40 µg
 Lane 1-7: SKOV3
 293T
 Raji
 PC-3
 HepG2
 Hela and Jurkat cell lysates
 Primary antibody: TA370346 (PSMA1 Antibody) at dilution 1/800
 Secondary antibody: Goat anti rabbit IgG at 1/5000 dilution
 Exposure time: 1 second



Immunohistochemistry of paraffin-embedded Human prostate cancer tissue using TA370346 (PSMA1 Antibody) at dilution 1/160 (Original magnification: ×200)



Immunohistochemistry of paraffin-embedded Human prostate cancer tissue using TA370346 (PSMA1 Antibody) at dilution 1/160, treated with fusion protein. (Original magnification: $\times 200$)