

## Product datasheet for **TA370345S**

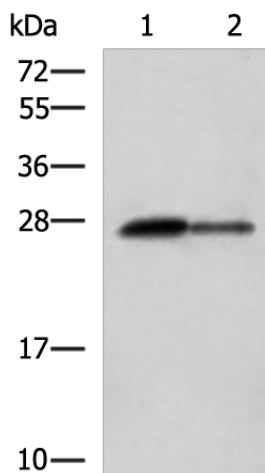
### CTRB1 Rabbit Polyclonal Antibody

#### Product data:

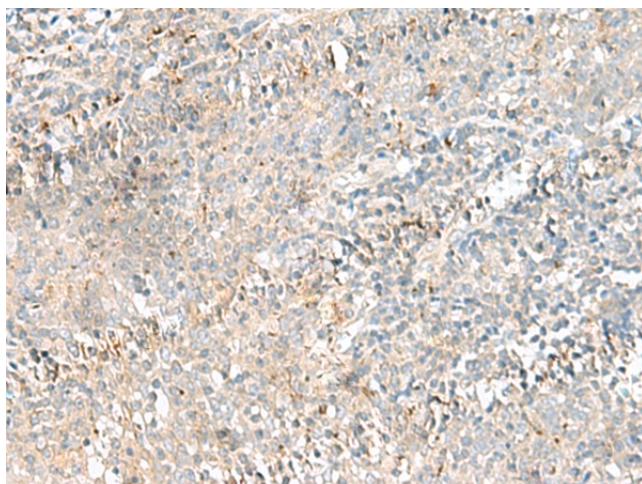
Product Type:	Primary Antibodies
Applications:	IHC, WB
Recommended Dilution:	WB: 1000-5000 WB positive control: Rat pancreas tissue and Mouse pancreas tissue lysates IHC: 40-200 Positive control: Human tonsil Predicted cell location: Secreted
Reactivity:	Human, Mouse, Rat
Host:	Rabbit
Isotype:	IgG
Clonality:	Polyclonal
Immunogen:	Fusion protein of human CTRB1
Formulation:	pH7.4 PBS, 0.05% NaN <sub>3</sub> , 40% Glycerol
Purification:	Antigen affinity purification
Conjugation:	Unconjugated
Storage:	Store at -20°C.
Stability:	1 year
Predicted Protein Size:	28 kDa
Gene Name:	chymotrypsinogen B1
Database Link:	<a href="#">Entrez Gene 1504 Human P17538</a>
Background:	This gene encodes a member of the serine protease family of enzymes and forms a principal precursor of the pancreatic proteolytic enzymes. The encoded preproprotein is synthesized in the acinar cells of the pancreas and secreted into the small intestine where it undergoes proteolytic activation to generate a functional enzyme. This gene is located adjacent to a related chymotrypsinogen gene. This gene encodes distinct isoforms, some or all of which may undergo similar processing to generate the mature protein.
Synonyms:	CTRB; FLJ42412; MGC88037



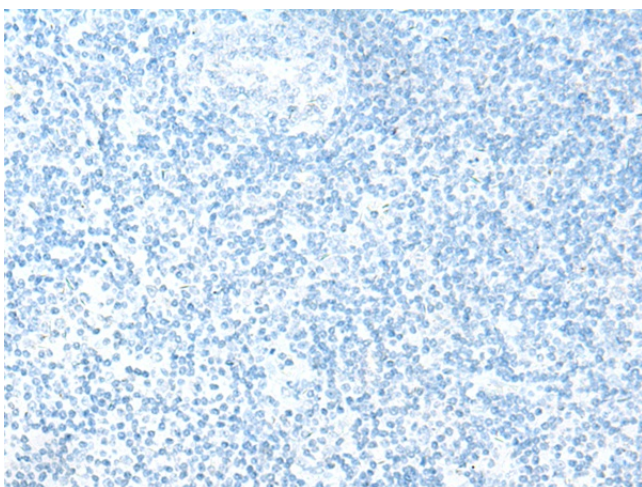
[View online »](#)

**Product images:**

Gel: 12%SDS-PAGE  
Lysate: 40  $\mu$ g  
Lane 1-2: Rat pancreas tissue and Mouse pancreas tissue lysates  
Primary antibody: [TA370345] (CTRB1 Antibody) at dilution 1/1000  
Secondary antibody: Goat anti rabbit IgG at 1/5000 dilution  
Exposure time: 3 seconds



Immunohistochemistry of paraffin-embedded Human tonsil tissue using [TA370345] (CTRB1 Antibody) at dilution 1/55 (Original magnification:  $\times$ 200)



Immunohistochemistry of paraffin-embedded Human tonsil tissue using [TA370345] (CTRB1 Antibody) at dilution 1/55, treated with fusion protein. (Original magnification:  $\times 200$ )