

## Product datasheet for **TA370339**

### PSMA3 Rabbit Polyclonal Antibody

#### Product data:

Product Type:	Primary Antibodies
Applications:	IHC, WB
Recommended Dilution:	WB: 500-2000 WB positive control: Hela cell, Mouse spleen tissue, Mouse liver tissue, PC3 cell, HL60 cell, A549 cell, NIH/3T3 cell lysates IHC: 50-300 Positive control: Human lung cancer Predicted cell location: Cytoplasm and Nucleus
Reactivity:	Human, Mouse, Rat
Host:	Rabbit
Isotype:	IgG
Clonality:	Polyclonal
Immunogen:	Fusion protein of human PSMA3
Formulation:	pH7.4 PBS, 0.05% NaN <sub>3</sub> , 40% Glycerol
Concentration:	lot specific
Purification:	Antigen affinity purification
Conjugation:	Unconjugated
Storage:	Store at -20°C.
Stability:	1 year
Predicted Protein Size:	28 kDa
Gene Name:	proteasome subunit alpha 3
Database Link:	<a href="#">Entrez Gene 5684 Human P25788</a>



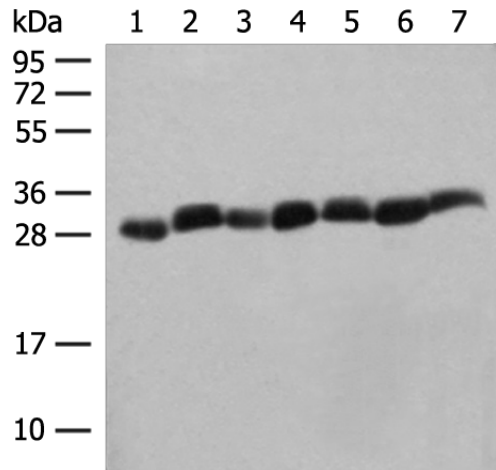
[View online »](#)

**Background:**

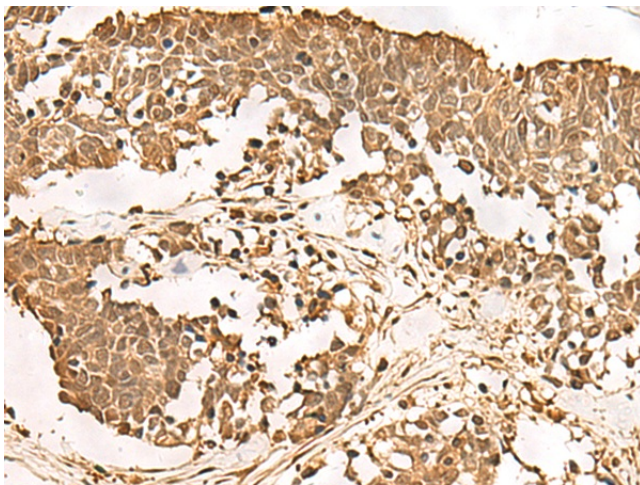
The proteasome is a multicatalytic proteinase complex with a highly ordered ring-shaped 20S core structure. The core structure is composed of 4 rings of 28 non-identical subunits; 2 rings are composed of 7 alpha subunits and 2 rings are composed of 7 beta subunits. Proteasomes are distributed throughout eukaryotic cells at a high concentration and cleave peptides in an ATP/ubiquitin-dependent process in a non-lysosomal pathway. An essential function of a modified proteasome, the immunoproteasome, is the processing of class I MHC peptides. This gene encodes a member of the peptidase T1A family, that is a 20S core alpha subunit. Two alternative transcripts encoding different isoforms have been identified.

**Synonyms:**

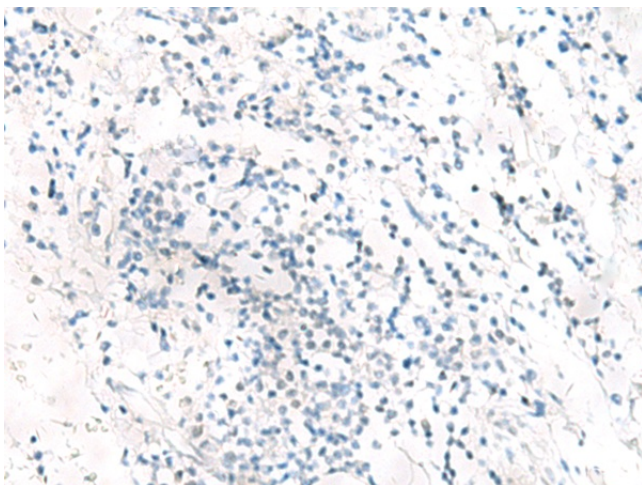
HC8; MGC12306; MGC32631; PSC3; PSC8

**Product images:**


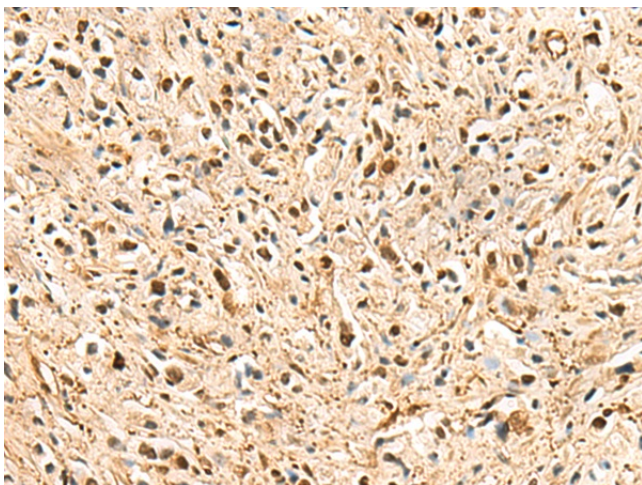
Gel: 12%SDS-PAGE  
 Lysate: 40  $\mu$ g  
 Lane 1-7: HeLa cell  
 Mouse spleen tissue  
 Mouse liver tissue  
 PC3 cell  
 HL60 cell  
 A549 cell  
 NIH/3T3 cell lysates  
 Primary antibody: TA370339 (PSMA3 Antibody) at dilution 1/350  
 Secondary antibody: Goat anti rabbit IgG at 1/8000 dilution  
 Exposure time: 10 seconds



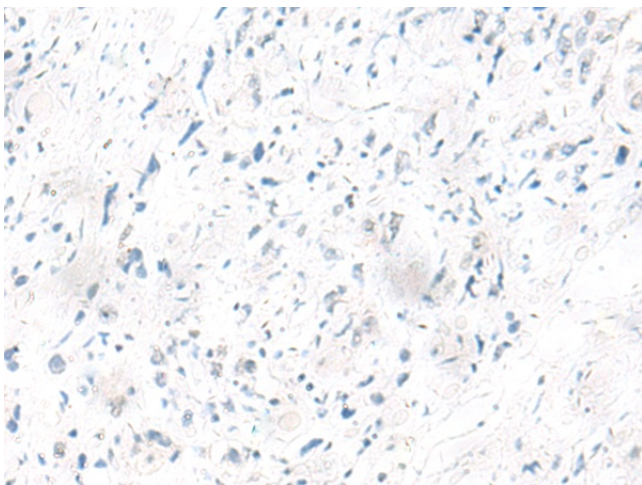
Immunohistochemistry of paraffin-embedded Human lung cancer tissue using TA370339 (PSMA3 Antibody) at dilution 1/50 (Original magnification:  $\times$ 200)



Immunohistochemistry of paraffin-embedded Human lung cancer tissue using TA370339 (PSMA3 Antibody) at dilution 1/50, treated with fusion protein. (Original magnification:  $\times 200$ )



Immunohistochemistry of paraffin-embedded Human prostate cancer tissue using TA370339 (PSMA3 Antibody) at dilution 1/50 (Original magnification:  $\times 200$ )



Immunohistochemistry of paraffin-embedded Human prostate cancer tissue using TA370339 (PSMA3 Antibody) at dilution 1/50, treated with fusion protein. (Original magnification:  $\times 200$ )