

## Product datasheet for **TA370336**

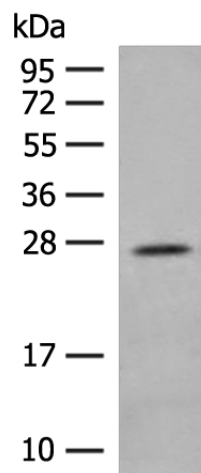
### MDFI Rabbit Polyclonal Antibody

#### Product data:

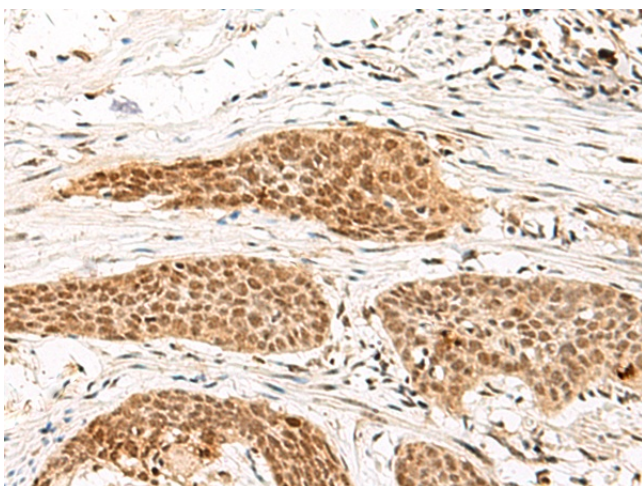
Product Type:	Primary Antibodies
Applications:	IHC, WB
Recommended Dilution:	WB: 500-2000 WB positive control: Human placenta tissue lysate IHC: 50-300 Positive control: Human esophagus cancer Predicted cell location: Nucleus
Reactivity:	Human, Rat
Host:	Rabbit
Isotype:	IgG
Clonality:	Polyclonal
Immunogen:	Fusion protein of human MDFI
Formulation:	pH7.4 PBS, 0.05% NaN <sub>3</sub> , 40% Glycerol
Concentration:	lot specific
Purification:	Antigen affinity purification
Conjugation:	Unconjugated
Storage:	Store at -20°C.
Stability:	1 year
Predicted Protein Size:	25 kDa
Gene Name:	MyoD family inhibitor
Database Link:	<a href="#">Entrez Gene 4188 Human Q99750</a>
Background:	This protein is a transcription factor that negatively regulates other myogenic family proteins. Studies of the mouse homolog, I-mf, show that it interferes with myogenic factor function by masking nuclear localization signals and preventing DNA binding. Knockout mouse studies show defects in the formation of vertebrae and ribs that also involve cartilage formation in these structures.
Synonyms:	I-MF; I-mfa; OTTHUMP00000196414



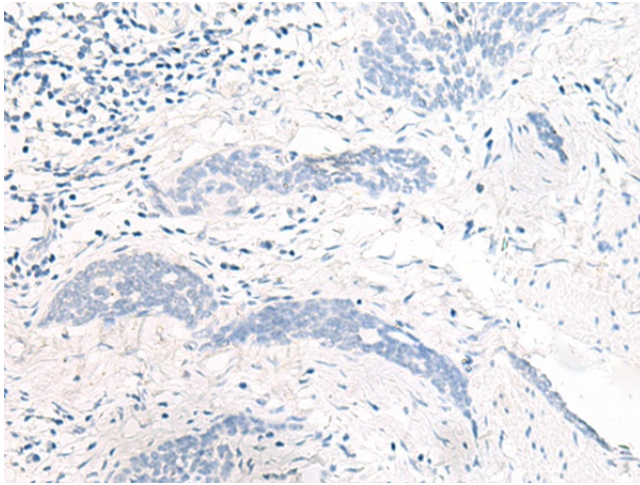
[View online »](#)

**Product images:**

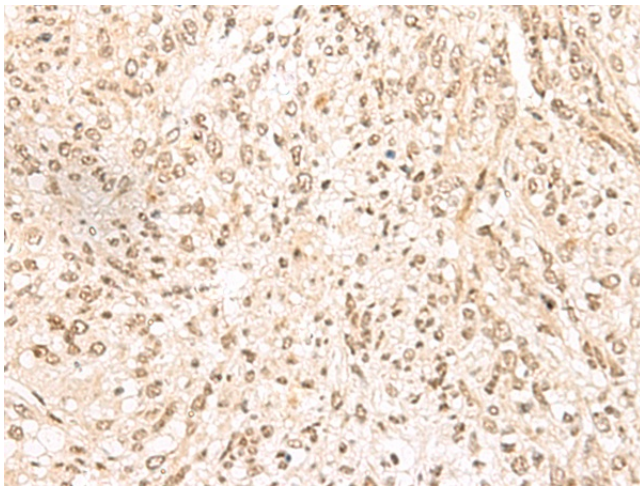
Gel: 12%SDS-PAGE  
Lysate: 40 µg  
Lane: Human placenta tissue lysate  
Primary antibody: TA370336 (MDFI Antibody) at dilution 1/400  
Secondary antibody: Goat anti rabbit IgG at 1/8000 dilution  
Exposure time: 2 minutes



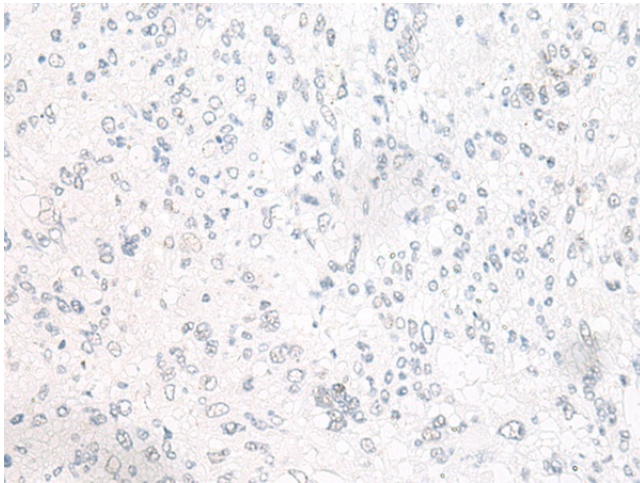
Immunohistochemistry of paraffin-embedded Human esophagus cancer tissue using TA370336 (MDFI Antibody) at dilution 1/55 (Original magnification: ×200)



Immunohistochemistry of paraffin-embedded Human esophagus cancer tissue using TA370336 (MDFI Antibody) at dilution 1/55, treated with fusion protein. (Original magnification: ×200)



Immunohistochemistry of paraffin-embedded Human liver cancer tissue using TA370336 (MDFI Antibody) at dilution 1/55 (Original magnification: ×200)



Immunohistochemistry of paraffin-embedded Human liver cancer tissue using TA370336 (MDFI Antibody) at dilution 1/55, treated with fusion protein. (Original magnification: ×200)