

## Product datasheet for **TA370332S**

### Glutathione Transferase zeta 1 (GSTZ1) Rabbit Polyclonal Antibody

#### Product data:

Product Type:	Primary Antibodies
Applications:	IHC, WB
Recommended Dilution:	WB: 1000-5000 WB positive control: Mouse liver tissue and HepG2 cell lysates IHC: 100-300 Positive control: Human thyroid cancer Predicted cell location: Cytoplasm
Reactivity:	Human, Mouse, Rat
Host:	Rabbit
Isotype:	IgG
Clonality:	Polyclonal
Immunogen:	Fusion protein of human GSTZ1
Formulation:	pH7.4 PBS, 0.05% NaN <sub>3</sub> , 40% Glycerol
Purification:	Antigen affinity purification
Conjugation:	Unconjugated
Storage:	Store at -20°C.
Stability:	1 year
Predicted Protein Size:	24 kDa
Gene Name:	glutathione S-transferase zeta 1
Database Link:	<a href="#">Entrez Gene 2954 Human O43708</a>

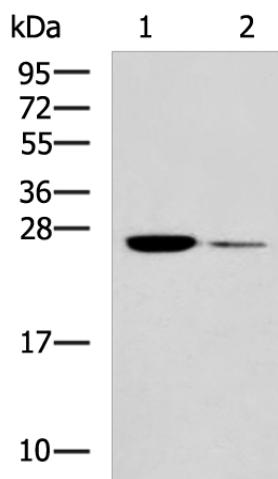
**Background:** This gene is a member of the glutathione S-transferase (GSTs) super-family which encodes multifunctional enzymes important in the detoxification of electrophilic molecules, including carcinogens, mutagens, and several therapeutic drugs, by conjugation with glutathione. This enzyme catalyzes the conversion of maleylacetoacetate to fumarylacetoacetate, which is one of the steps in the phenylalanine/tyrosine degradation pathway. Deficiency of a similar gene in mouse causes oxidative stress. Several transcript variants of this gene encode multiple protein isoforms.



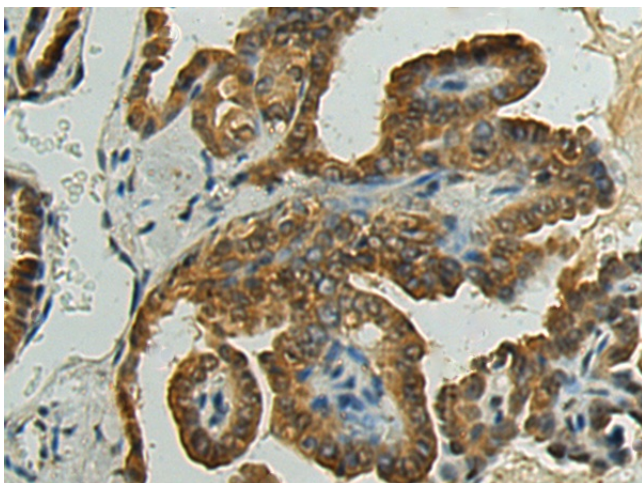
[View online »](#)

Synonyms: GSTZ1-1; MAAI; MAI; MGC2029

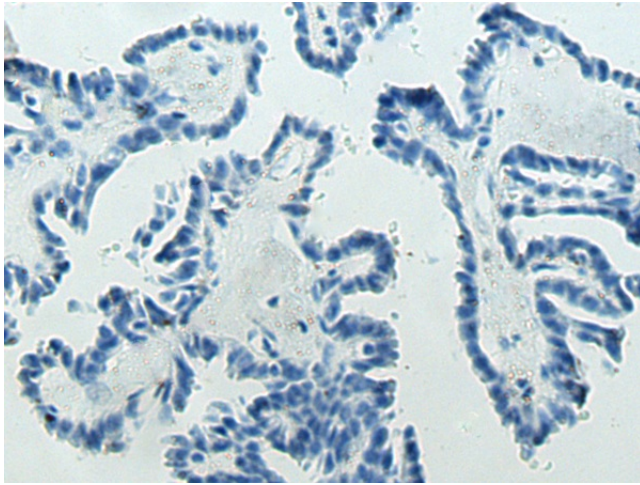
**Product images:**



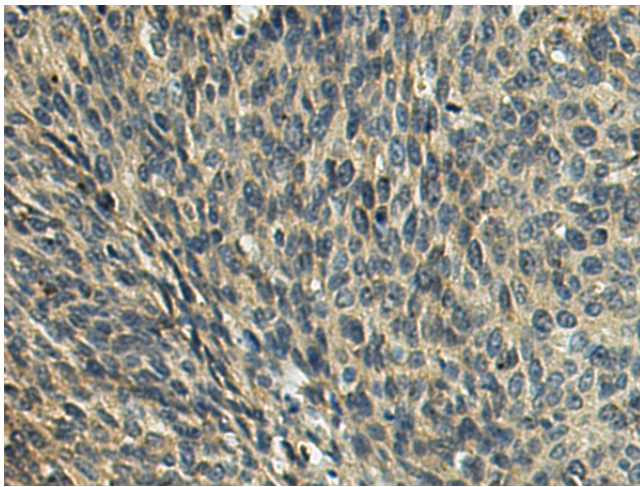
Gel: 12%SDS-PAGE  
 Lysate: 40 µg  
 Lane 1-2: Mouse liver tissue and HepG2 cell lysates  
 Primary antibody: [TA370332] (GSTZ1 Antibody) at dilution 1/1200  
 Secondary antibody: Goat anti rabbit IgG at 1/5000 dilution  
 Exposure time: 1 minute



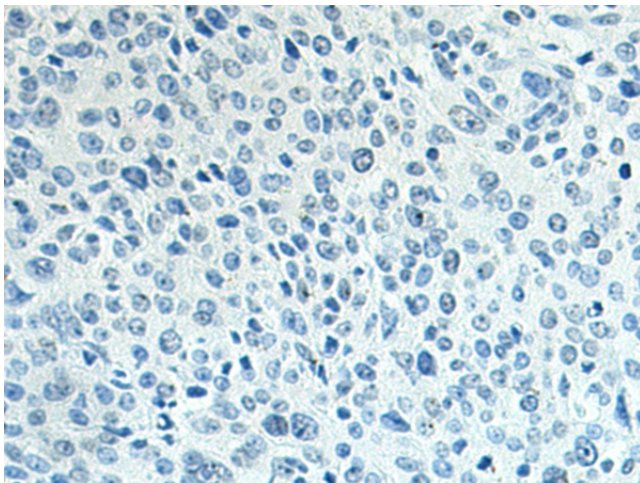
Immunohistochemistry of paraffin-embedded Human thyroid cancer tissue using [TA370332] (GSTZ1 Antibody) at dilution 1/100 (Original magnification: ×200)



Immunohistochemistry of paraffin-embedded Human thyroid cancer tissue using [TA370332] (GSTZ1 Antibody) at dilution 1/100, treated with fusion protein. (Original magnification:  $\times 200$ )



Immunohistochemistry of paraffin-embedded Human cervical cancer tissue using [TA370332] (GSTZ1 Antibody) at dilution 1/100 (Original magnification:  $\times 200$ )



Immunohistochemistry of paraffin-embedded Human cervical cancer tissue using [TA370332] (GSTZ1 Antibody) at dilution 1/100, treated with fusion protein. (Original magnification:  $\times 200$ )