

Product datasheet for **TA370330**

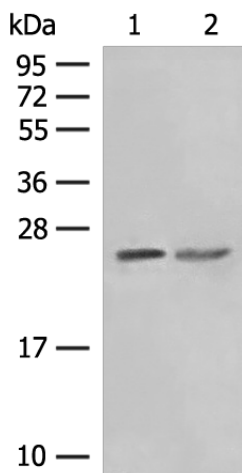
PCTP Rabbit Polyclonal Antibody

Product data:

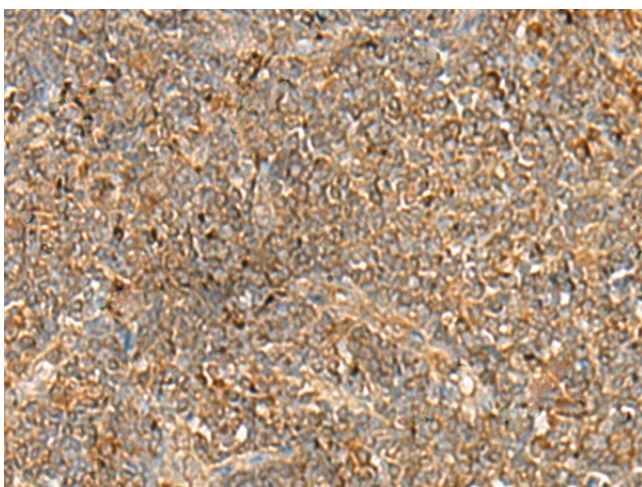
Product Type:	Primary Antibodies
Applications:	IHC, WB
Recommended Dilution:	WB: 200-1000 WB positive control: HepG2 cell, Human fetal liver tissue lysates IHC: 50-300 Positive control: Human tonsil Predicted cell location: Cytoplasm or Nucleus
Reactivity:	Human, Mouse
Host:	Rabbit
Isotype:	IgG
Clonality:	Polyclonal
Immunogen:	Fusion protein of human PCTP
Formulation:	pH7.4 PBS, 0.05% NaN ₃ , 40% Glycerol
Concentration:	lot specific
Purification:	Antigen affinity purification
Conjugation:	Unconjugated
Storage:	Store at -20°C.
Stability:	1 year
Predicted Protein Size:	25 kDa
Gene Name:	phosphatidylcholine transfer protein
Database Link:	Entrez Gene 58488 Human Q9UKL6
Background:	Catalyzes the transfer of phosphatidylcholine between membranes. Binds a single lipid molecule.
Synonyms:	PC-TP; STARD2

[View online »](#)

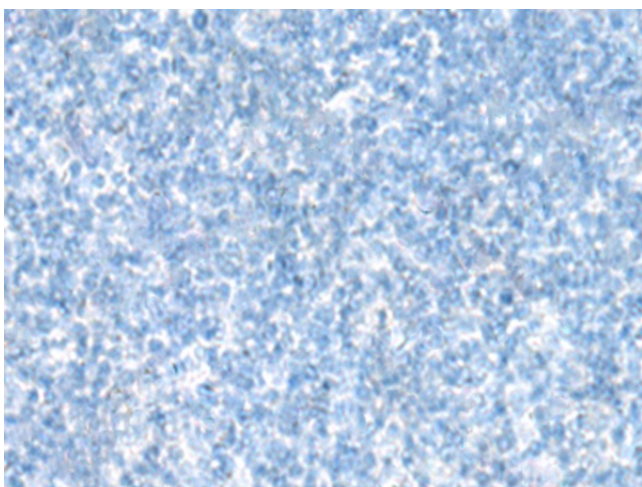
Product images:



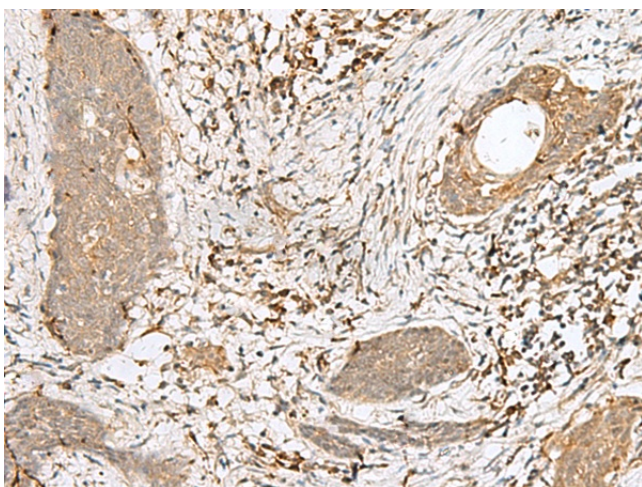
Gel: 12%SDS-PAGE
 Lysate: 40 µg
 Lane 1-2: HepG2 cell
 Human fetal liver tissue lysates
 Primary antibody: TA370330 (PCTP Antibody) at dilution 1/250
 Secondary antibody: Goat anti rabbit IgG at 1/8000 dilution
 Exposure time: 1 minute



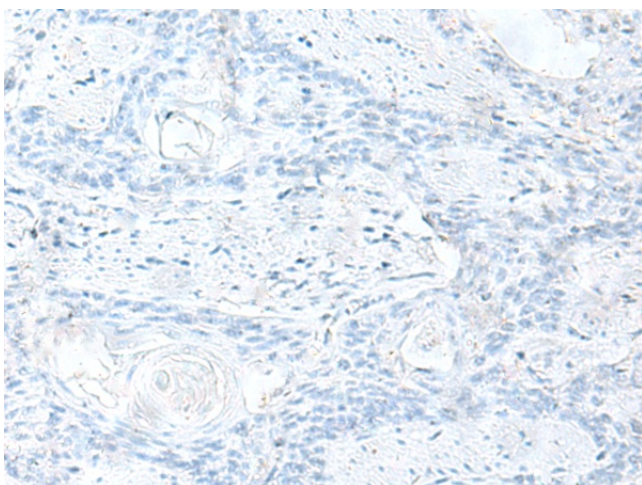
Immunohistochemistry of paraffin-embedded Human tonsil tissue using TA370330 (PCTP Antibody) at dilution 1/25 (Original magnification: ×200)



Immunohistochemistry of paraffin-embedded Human tonsil tissue using TA370330 (PCTP Antibody) at dilution 1/25, treated with fusion protein. (Original magnification: ×200)



Immunohistochemistry of paraffin-embedded Human esophagus cancer tissue using TA370330 (PCTP Antibody) at dilution 1/25 (Original magnification: ×200)



Immunohistochemistry of paraffin-embedded Human esophagus cancer tissue using TA370330 (PCTP Antibody) at dilution 1/25, treated with fusion protein. (Original magnification: ×200)