

Product datasheet for **TA370326**

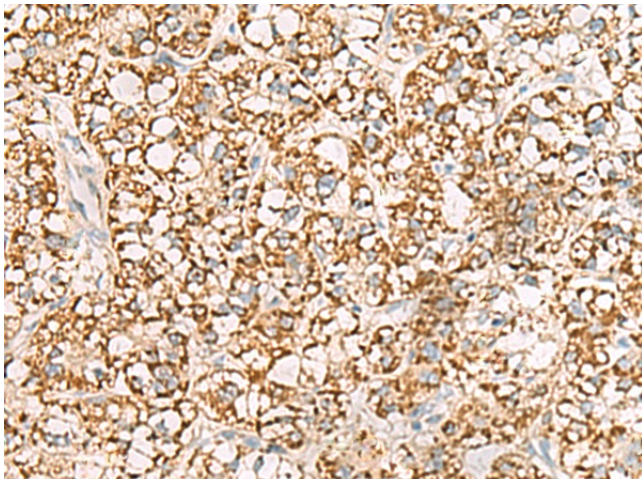
ISOC2 Rabbit Polyclonal Antibody

Product data:

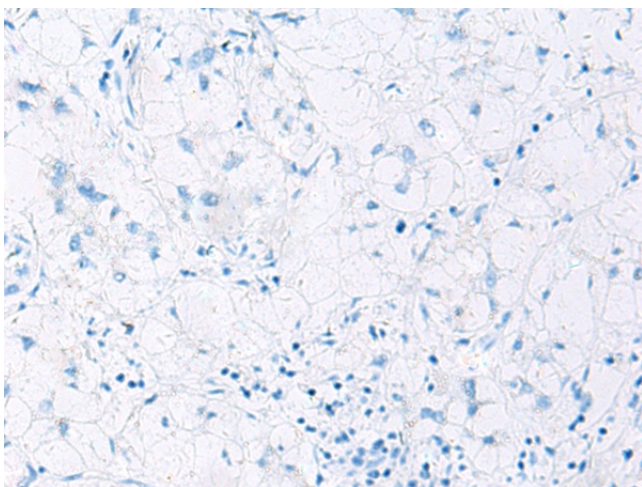
Product Type:	Primary Antibodies
Applications:	IHC
Recommended Dilution:	IHC: 100-300 Positive control: Human liver cancer Predicted cell location: Cytoplasm
Reactivity:	Human, Mouse
Host:	Rabbit
Isotype:	IgG
Clonality:	Polyclonal
Immunogen:	Fusion protein of human ISOC2
Formulation:	pH7.4 PBS, 0.05% NaN ₃ , 40% Glycerol
Concentration:	lot specific
Purification:	Antigen affinity purification
Conjugation:	Unconjugated
Storage:	Store at -20°C.
Stability:	1 year
Gene Name:	isochorismatase domain containing 2
Database Link:	Entrez Gene 79763 Human Q96AB3
Background:	The exact function of ISOC2 remains unknown.
Synonyms:	FLJ18582; FLJ23469



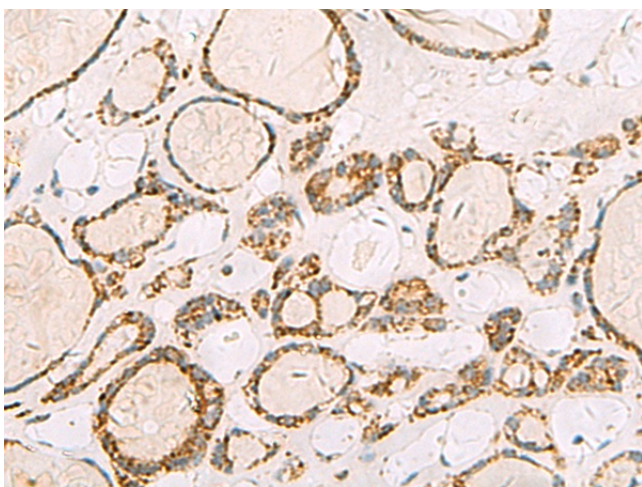
[View online »](#)

Product images:

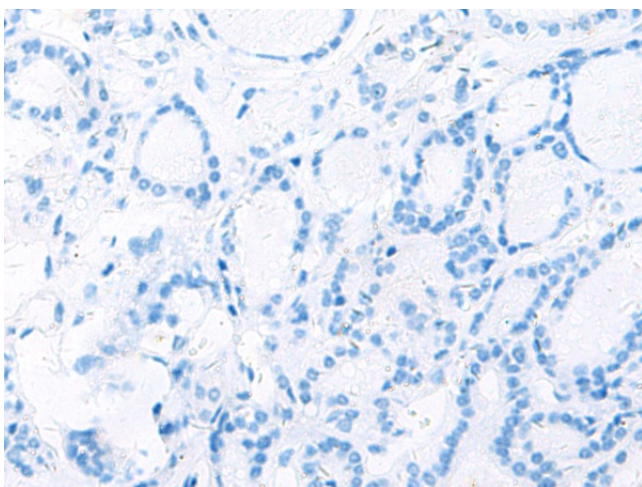
Immunohistochemistry of paraffin-embedded Human liver cancer tissue using TA370326 (ISOC2 Antibody) at dilution 1/95 (Original magnification: ×200)



Immunohistochemistry of paraffin-embedded Human liver cancer tissue using TA370326 (ISOC2 Antibody) at dilution 1/95, treated with fusion protein. (Original magnification: ×200)



Immunohistochemistry of paraffin-embedded Human thyroid cancer tissue using TA370326 (ISOC2 Antibody) at dilution 1/95 (Original magnification: $\times 200$)



Immunohistochemistry of paraffin-embedded Human thyroid cancer tissue using TA370326 (ISOC2 Antibody) at dilution 1/95, treated with fusion protein. (Original magnification: $\times 200$)