

## Product datasheet for **TA370322S**

### **TMA16 Rabbit Polyclonal Antibody**

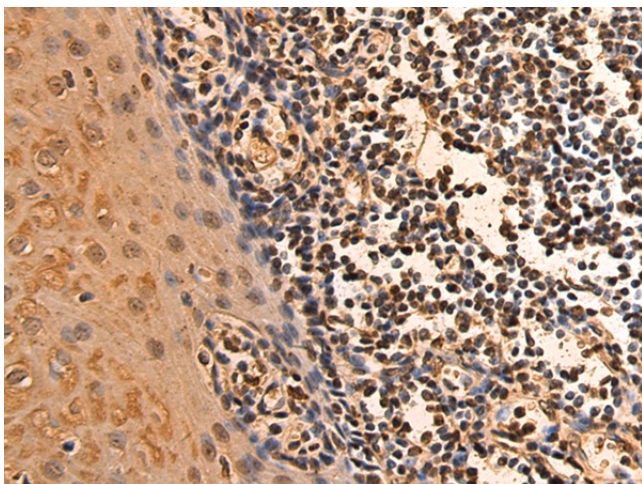
#### **Product data:**

Product Type:	Primary Antibodies
Applications:	IHC
Recommended Dilution:	IHC: 100-200 Positive control: Human esophagus cancer Predicted cell location: Nucleus and Cytoplasm
Reactivity:	Human
Host:	Rabbit
Isotype:	IgG
Clonality:	Polyclonal
Immunogen:	Fusion protein of human TMA16
Formulation:	pH7.4 PBS, 0.05% NaN <sub>3</sub> , 40% Glycerol
Purification:	Antigen affinity purification
Conjugation:	Unconjugated
Storage:	Store at -20°C.
Stability:	1 year
Gene Name:	translation machinery associated 16 homolog
Database Link:	<a href="#">Entrez Gene 55319 Human Q96EY4</a>
Background:	The function of this protein remains unknown.
Synonyms:	C4orf43

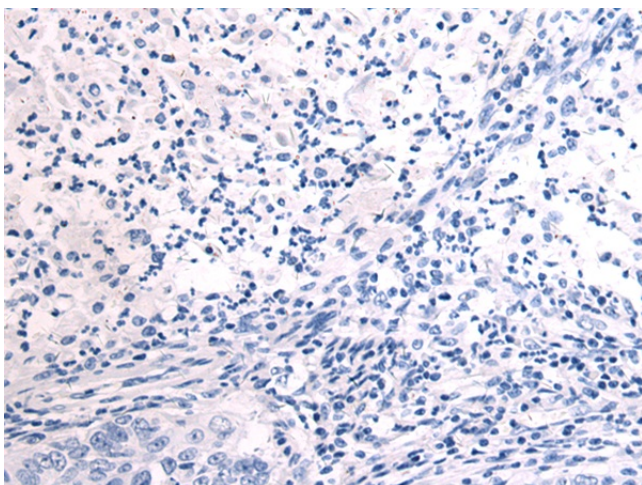


[View online »](#)

## Product images:



Immunohistochemistry of paraffin-embedded Human esophagus cancer tissue using [TA370322] (TMA16 Antibody) at dilution 1/105 (Original magnification:  $\times 200$ )



Immunohistochemistry of paraffin-embedded Human esophagus cancer tissue using [TA370322] (TMA16 Antibody) at dilution 1/105, treated with fusion protein. (Original magnification:  $\times 200$ )