

Product datasheet for **TA370322**

TMA16 Rabbit Polyclonal Antibody

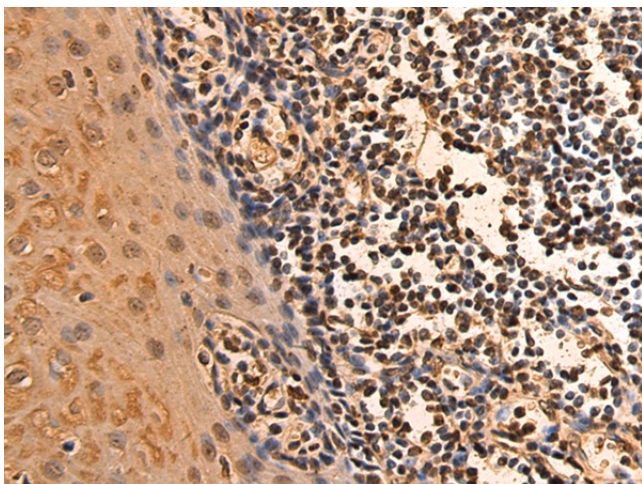
Product data:

Product Type:	Primary Antibodies
Applications:	IHC
Recommended Dilution:	IHC: 100-200 Positive control: Human esophagus cancer Predicted cell location: Nucleus and Cytoplasm
Reactivity:	Human
Host:	Rabbit
Isotype:	IgG
Clonality:	Polyclonal
Immunogen:	Fusion protein of human TMA16
Formulation:	pH7.4 PBS, 0.05% NaN ₃ , 40% Glycerol
Concentration:	lot specific
Purification:	Antigen affinity purification
Conjugation:	Unconjugated
Storage:	Store at -20°C.
Stability:	1 year
Gene Name:	translation machinery associated 16 homolog
Database Link:	Entrez Gene 55319 Human Q96EY4
Background:	The function of this protein remains unknown.
Synonyms:	C4orf43

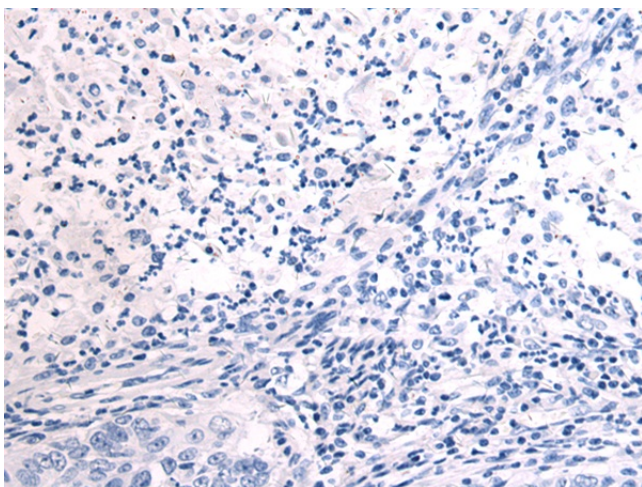


[View online »](#)

Product images:



Immunohistochemistry of paraffin-embedded Human esophagus cancer tissue using TA370322 (TMA16 Antibody) at dilution 1/105 (Original magnification: $\times 200$)



Immunohistochemistry of paraffin-embedded Human esophagus cancer tissue using TA370322 (TMA16 Antibody) at dilution 1/105, treated with fusion protein. (Original magnification: $\times 200$)