

Product datasheet for **TA370320S**

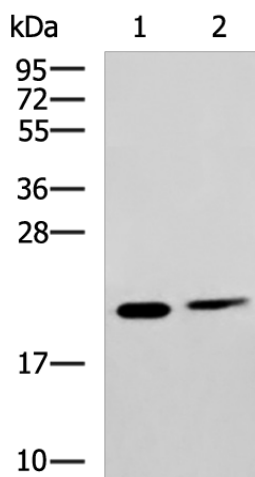
SR1 (SRI) Rabbit Polyclonal Antibody

Product data:

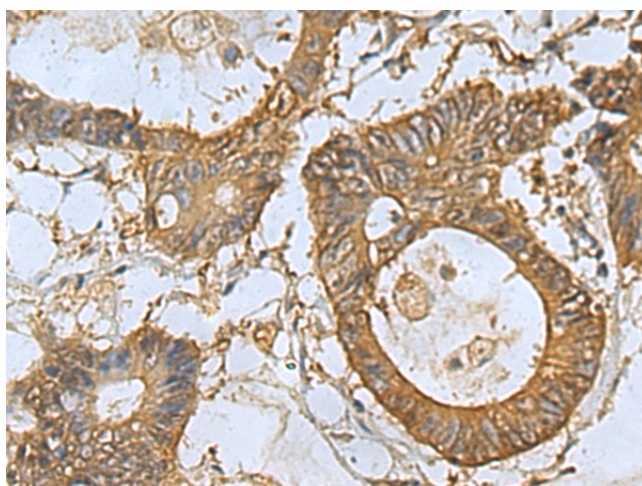
Product Type:	Primary Antibodies
Applications:	IHC, WB
Recommended Dilution:	WB: 500-2000 WB positive control: Human placenta tissue, 293T cell lysates IHC: 100-300 Positive control: Human colorectal cancer Predicted cell location: Cytoplasm
Reactivity:	Human, Mouse
Host:	Rabbit
Isotype:	IgG
Clonality:	Polyclonal
Immunogen:	Fusion protein of human SRI
Formulation:	pH7.4 PBS, 0.05% NaN ₃ , 40% Glycerol
Purification:	Antigen affinity purification
Conjugation:	Unconjugated
Storage:	Store at -20°C.
Stability:	1 year
Predicted Protein Size:	22 kDa
Gene Name:	sorcin
Database Link:	Entrez Gene 6717 Human P30626
Background:	This gene encodes a calcium-binding protein with multiple E-F hand domains that relocates from the cytoplasm to the sarcoplasmic reticulum in response to elevated calcium levels. In addition to regulating intracellular calcium homeostasis it also modulates excitation-contraction coupling in the heart. Alternative splicing results in multiple transcript variants encoding distinct proteins. Multiple pseudogenes exist for this gene.
Synonyms:	CP-22; FLJ26259; H_RG167B05.1; SCN; sorcin; V19



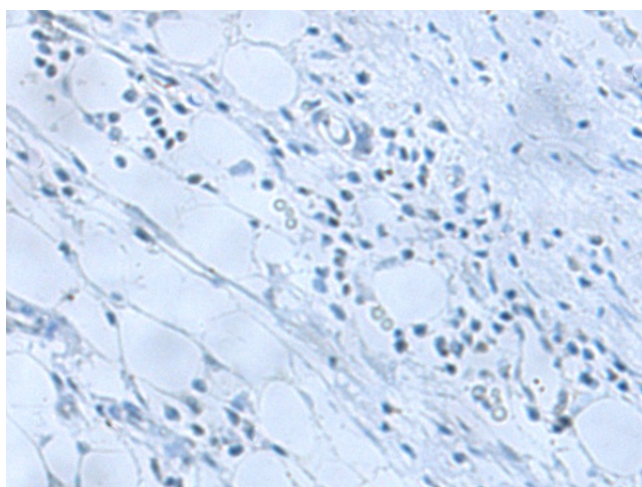
[View online »](#)

Product images:


Gel: 12%SDS-PAGE
 Lysate: 40 μ g
 Lane 1-2: Human placenta tissue
 293T cell lysates
 Primary antibody: [TA370320] (SRI Antibody) at
 dilution 1/650
 Secondary antibody: Goat anti rabbit IgG at
 1/5000 dilution
 Exposure time: 30 seconds



Immunohistochemistry of paraffin-embedded
 Human colorectal cancer tissue using [TA370320]
 (SRI Antibody) at dilution 1/120 (Original
 magnification: \times 200)



Immunohistochemistry of paraffin-embedded
 Human colorectal cancer tissue using [TA370320]
 (SRI Antibody) at dilution 1/120, treated with
 fusion protein. (Original magnification: \times 200)